



162 Milford House, 190 Strand, London, WC2R 1AB

£1,200

- 24 HOUR CONCIERGE SERVICE
- SWIMMING POOL
- CINEMA
- WALKING DISTANCE TO TEMPLE TUBE STATION
- VIDEO VIEWING AVAILABLE
- MEETING ROOM
- PRIVATE BALCONY
- GYM AND SPA
- UNDERFLOOR HEATING AND AIR COOLING
- VIRTUAL GOLF COURSE

162 Milford House, London WC2R 1AB

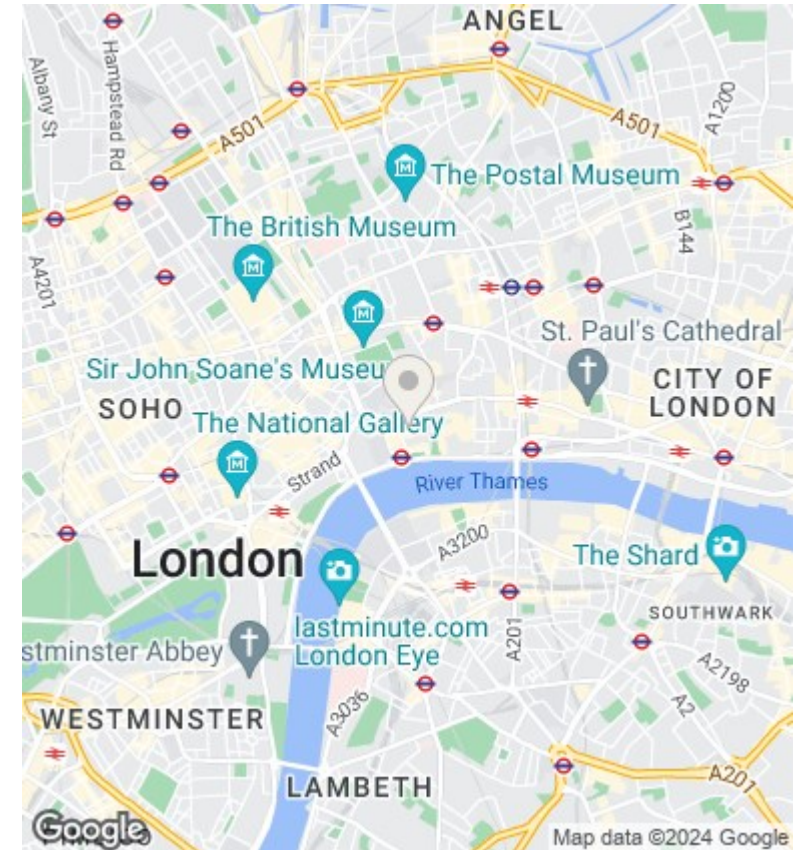
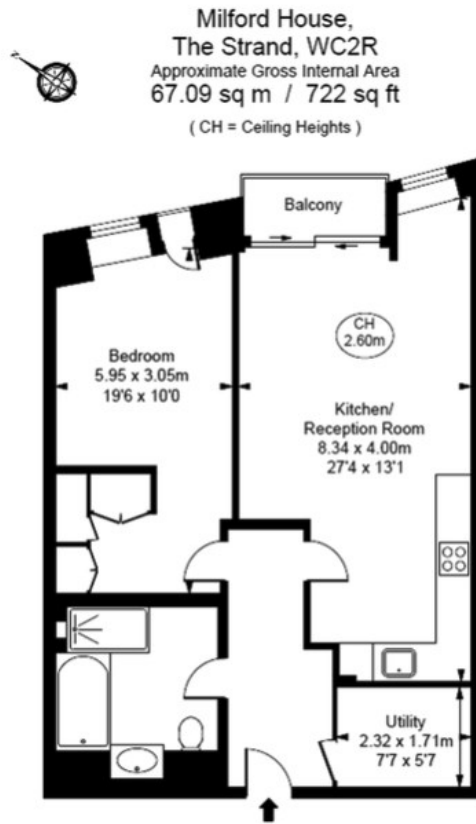
A beautifully presented 1 bedroom apartment with a private balcony and allocated parking space located in the luxurious development of Milford House in 190 Strand is available to rent. The development is finished to an exceptional high standards. The development of 190 Strand offers the residence 24/7 concierge , business lounge , only residence gym , spa and swimming pool. This apartment benefits from 1 double bedroom , modern bathroom , large reception leading onto a private balcony and with fully fitted open plan kitchen. 190 Strand is conveniently located minutes away from Temple and Covent Garden Underground stations.



Council Tax Band:







Directions

Viewings

Viewings by arrangement only.
Call 02077225022 to make an appointment.

Council Tax Band

Energy Efficiency Rating		
	Current	Potential
<i>Very energy efficient - lower running costs</i>		
(92 plus) A		
(81-91) B		
(69-80) C		
(55-68) D		
(39-54) E		
(21-38) F		
(1-20) G		
<i>Not energy efficient - higher running costs</i>		
England & Wales	EU Directive 2002/91/EC	