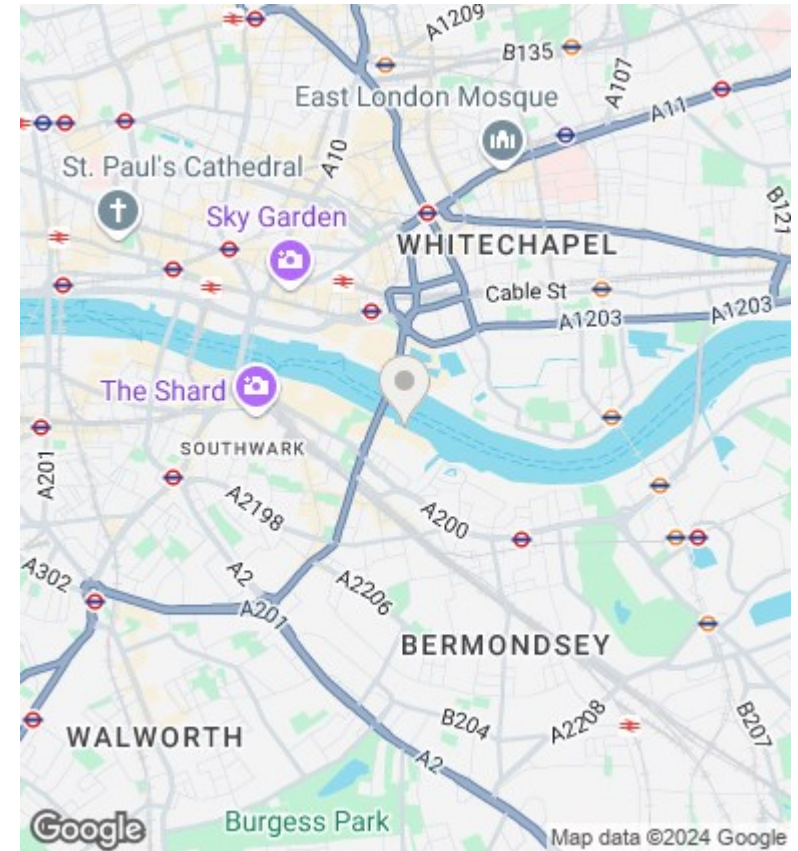
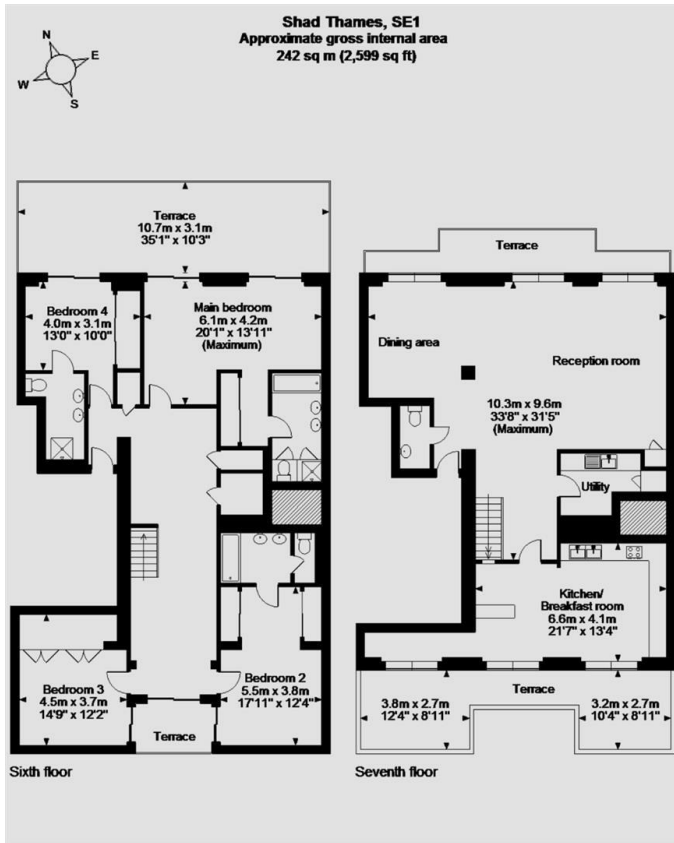




Butlers Wharf, Shad Thames, London Bridge, London SE1 2YE

£5,950,000

- PENTHOUSE
- SEPERATE EAT IN KITCHEN , DINNING ROOM
- AMZING VIEWS OF RIVER AND TOWER BRIDGE
- 24H CONCIERGE
- 4 PRIVATE TERRACES
- WALKING DISTANCE TO LONDON BRIDGE STATION
- 4 BEDROOMS , 3 BATHROOMS AND GUESST WC
- VIDEO VIEWING AVAILALBE



Viewings

Viewings by arrangement only.
Call 02077225022 to make an appointment.

Council Tax Band

D

EPC Rating:

C

