



## Sloane Court West, London SW3 4TB

£4,800 Per Month

- Steps away from Sloane Square and Kings Road
- Unfurnished
- Near Sloane Square tube station
- Onsite porter
- Available now
- High Ceilings
- Walking distance to Battersea Park

**SLOANE COURT WEST, SW3**

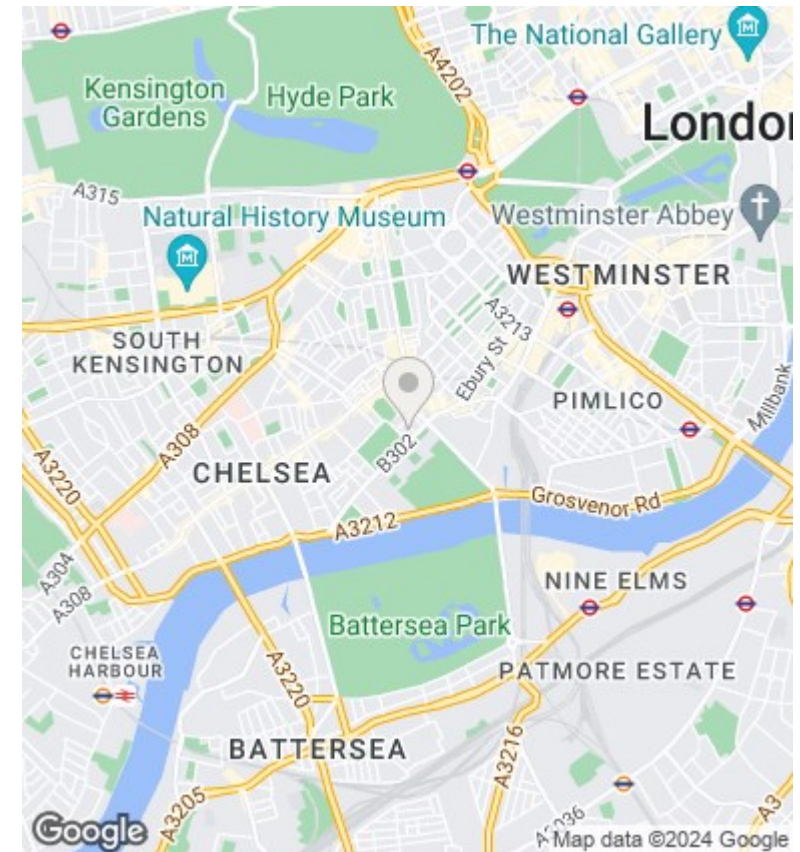
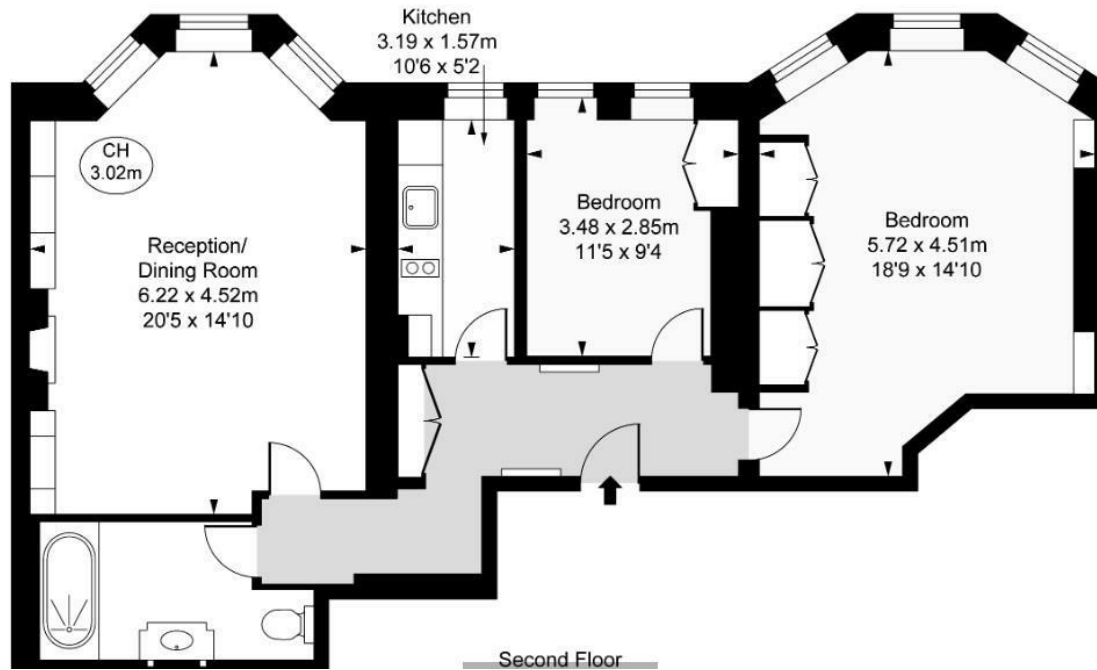
Gross internal area 922 sq ft (85.66 sq m)

CH = Ceiling Heights

For identification purposes only.

**For illustrative purposes only – not to scale**

The position and size of doors, windows, appliances and other features are approximate only.



### Viewings

Viewings by arrangement only.  
Call 02077225022 to make an appointment.

### Council Tax Band

G

### EPC Rating:

D

Energy Efficiency Rating		Current	Potential
Very energy efficient - lower running costs			
(92 plus) A			
(81-91) B			
(69-80) C			
(55-68) D		68	
(39-54) E			
(21-38) F			
(1-20) G			
Not energy efficient - higher running costs			
England & Wales		EU Directive 2002/91/EC	