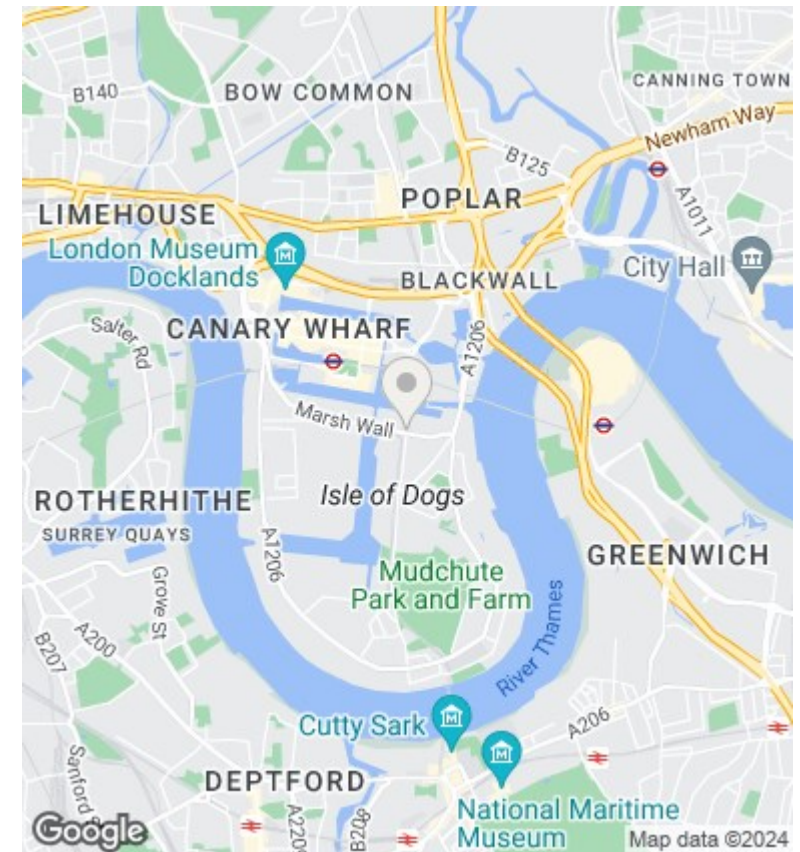
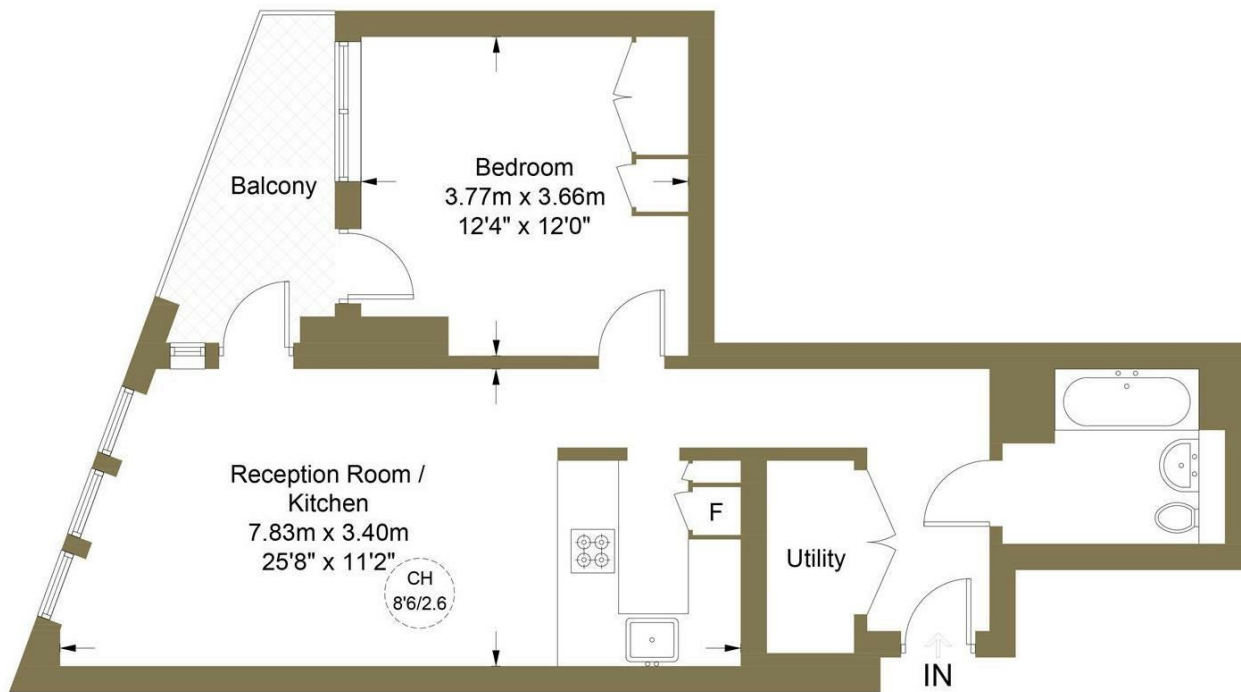




## Amory Tower, 203 Marsh Wall, Canary Wharf, E14 E14 9ZN

£2,650 Per Month

- Canary Wharf Views
- Open Plan Layout
- Convenient Location
- Enquire Today!
- Fully Furnished
- Premium Finishes
- Modern Living
- Spacious Apartment
- Heating & Air Cooling
- Available 7th May



## Viewings

Viewings by arrangement only.  
Call 02077225022 to make an appointment.

## Council Tax Band

D

## EPC Rating:

B

Energy Efficiency Rating		Current	Potential
<i>Very energy efficient - lower running costs</i>			
(92 plus)	A	84	
(81-91)	B		
(69-80)	C		
(55-68)	D		
(39-54)	E		
(21-38)	F		
(1-20)	G		
<i>Not energy efficient - higher running costs</i>			
<b>England &amp; Wales</b>		EU Directive 2002/91/EC	