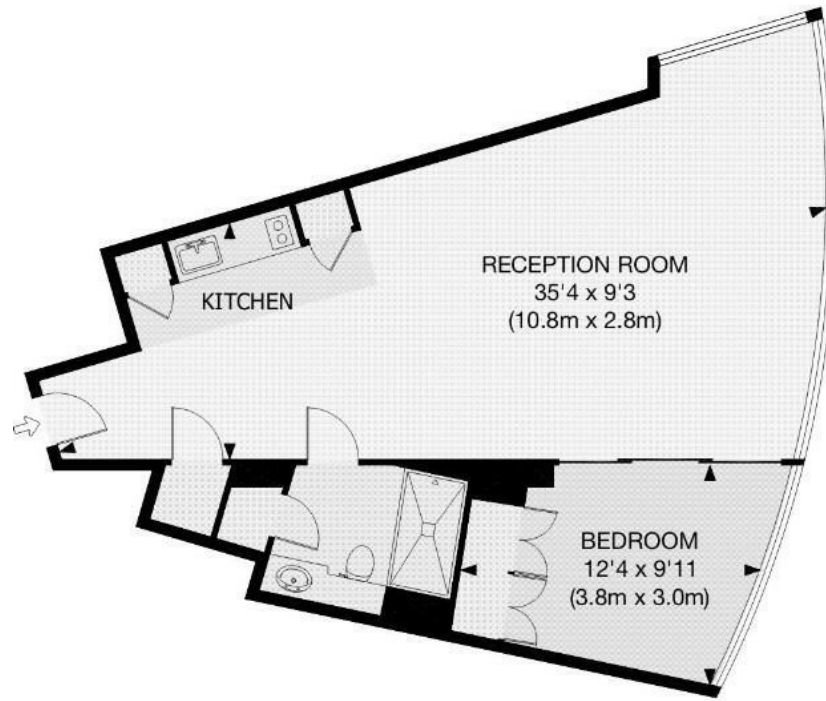




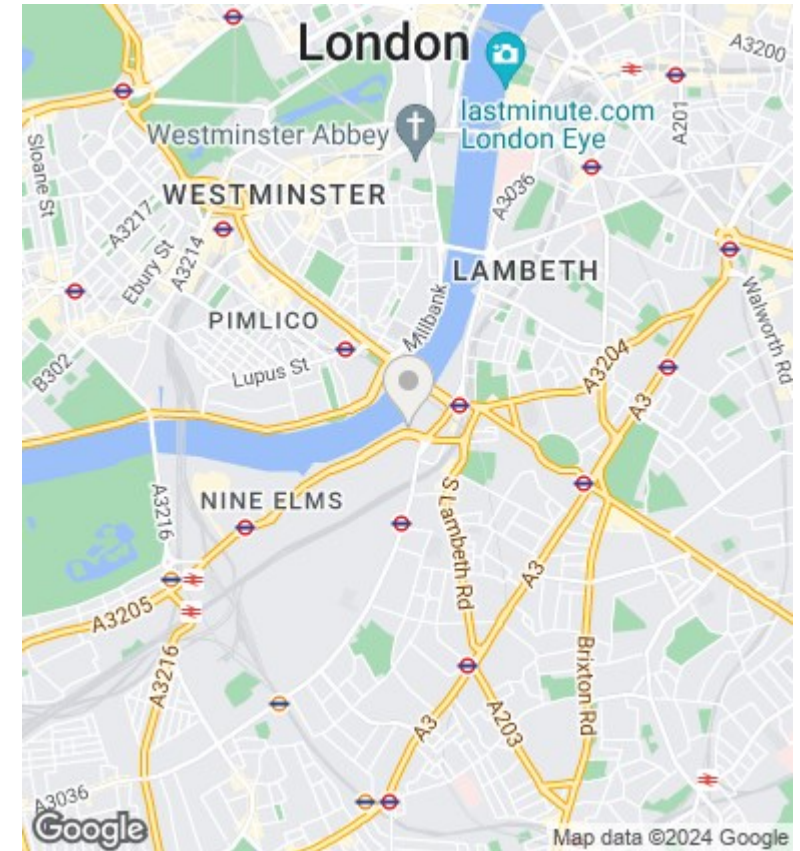
The Tower, St George Wharf, Vauxhall SW8 2DU

£3,150

- 24/7 concierge
- gym and spa
- swimming pool overlooking River
- dining room / meeting room
- cinema
- business lounge
- under ground parking
- under floor heating and air cooling
- smart home system
- minutes away from Vauxhall tube station



APPROX. GROSS INTERNAL FLOOR AREA 656 SQ FT / 61 SQ M



Viewings

Viewings by arrangement only.
Call 02077225022 to make an appointment.

Council Tax Band

C

EPC Rating:

Energy Efficiency Rating		
	Current	Potential
<i>Very energy efficient - lower running costs</i>		
(92 plus) A		
(81-91) B		
(69-80) C		
(55-68) D		
(39-54) E		
(21-38) F		
(1-20) G		
<i>Not energy efficient - higher running costs</i>		
England & Wales	EU Directive 2002/91/EC	