



Meranti House, Goodman's Fields, 84 Alie Street, London, E1 E1 8QB

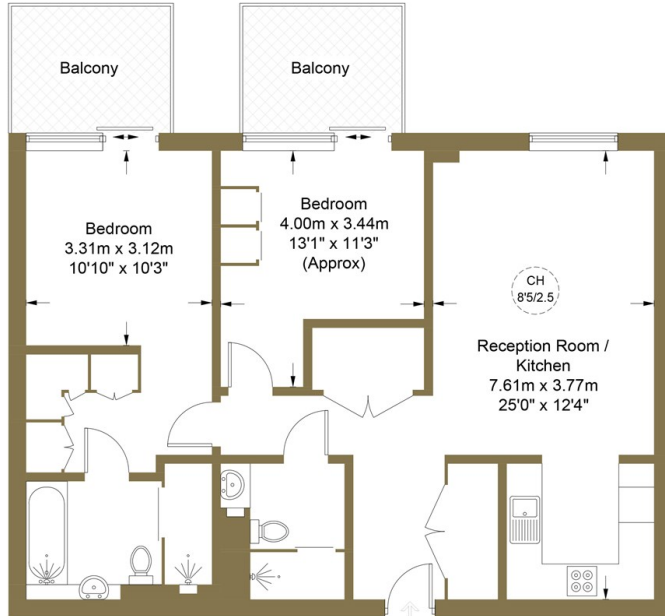
£4,000 PCM

- 24/7 Concierge
- Sixth Floor
- Security
- Available September
- Luxurious Specification
- Residents Gym & Spa
- 2 Acres of Landscaped Gardens
- Fully Furnished
- Residents Cinema Room
- Nearby Transport Links



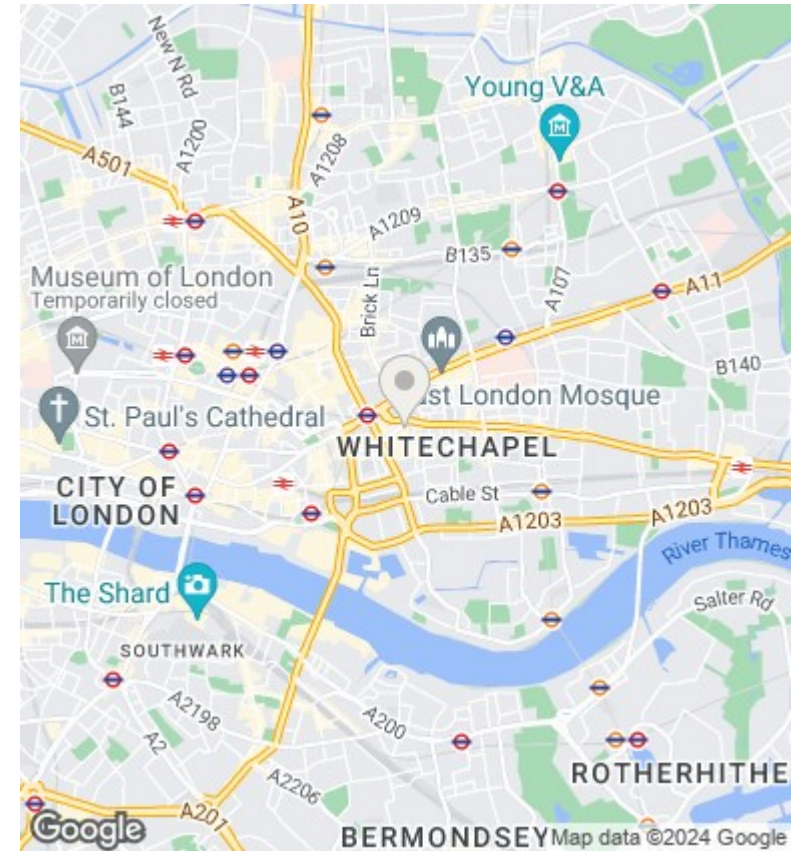
Meranti House, E1

Approximate Gross Internal Area = 81.3 sq m / 875 sq ft



Sixth Floor

This plan is for layout guidance only. Not drawn to scale unless stated. Windows and door openings are approximate. Whilst every care is taken in the preparation of this plan, please check all dimensions, shapes and compass bearings before making any decisions reliant upon them. (ID906649)



Viewings

Viewings by arrangement only.
Call 02077225022 to make an appointment.

Council Tax Band

F

EPC Rating:

B

Energy Efficiency Rating		Current	Potential
Very energy efficient - lower running costs			
(92 plus)	A		
(81-91)	B	85	85
(69-80)	C		
(55-68)	D		
(39-54)	E		
(21-38)	F		
(1-20)	G		
Not energy efficient - higher running costs			
England & Wales		EU Directive 2002/91/EC	