

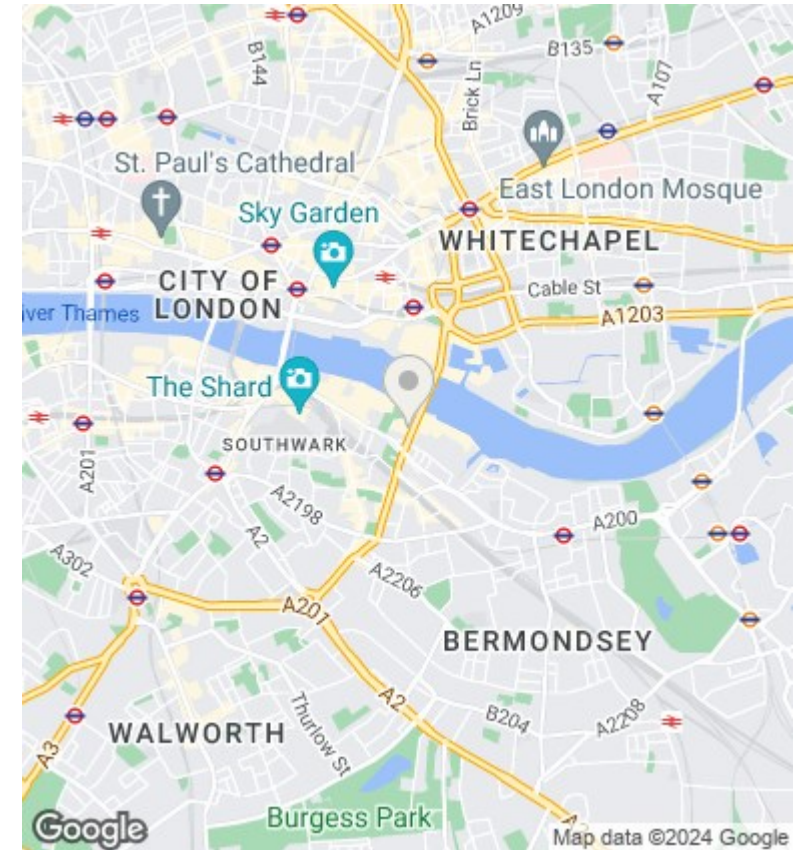
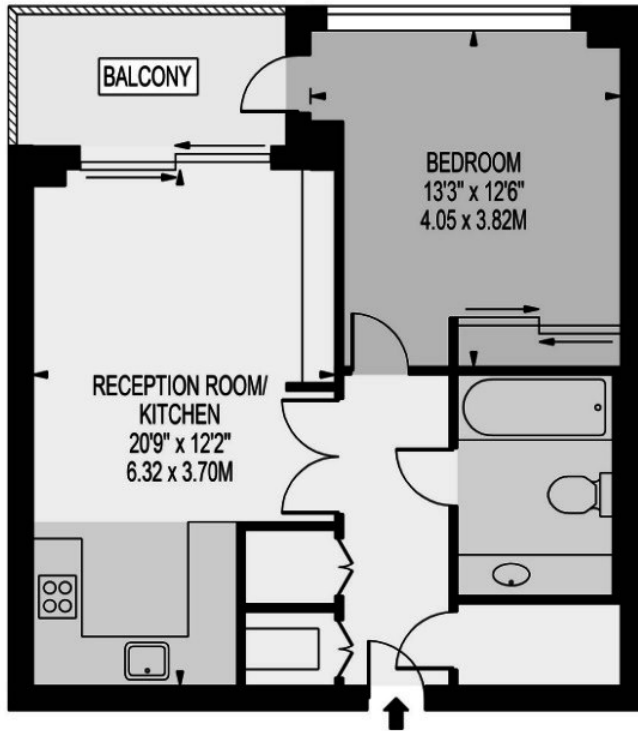


Tudor House , One Tower Bridge, Duchess Walk SE1 2SA

£3,300 Per Month

- 24/7 concierge
- business lounge
- private balcony overlooking the garden
- gym and spa
- virtual golf course
- West facing
- swimming pool
- under floor heating

APPROXIMATE GROSS INTERNAL FLOOR AREA: 558 SQ FT - 51.82 SQ M



Viewings

Viewings by arrangement only.
Call 02077225022 to make an appointment.

Council Tax Band

EPC Rating:

Energy Efficiency Rating		
	Current	Potential
<i>Very energy efficient - lower running costs</i>		
(92 plus) A		
(81-91) B		
(69-80) C		
(55-68) D		
(39-54) E		
(21-38) F		
(1-20) G		
<i>Not energy efficient - higher running costs</i>		
England & Wales	EU Directive 2002/91/EC	