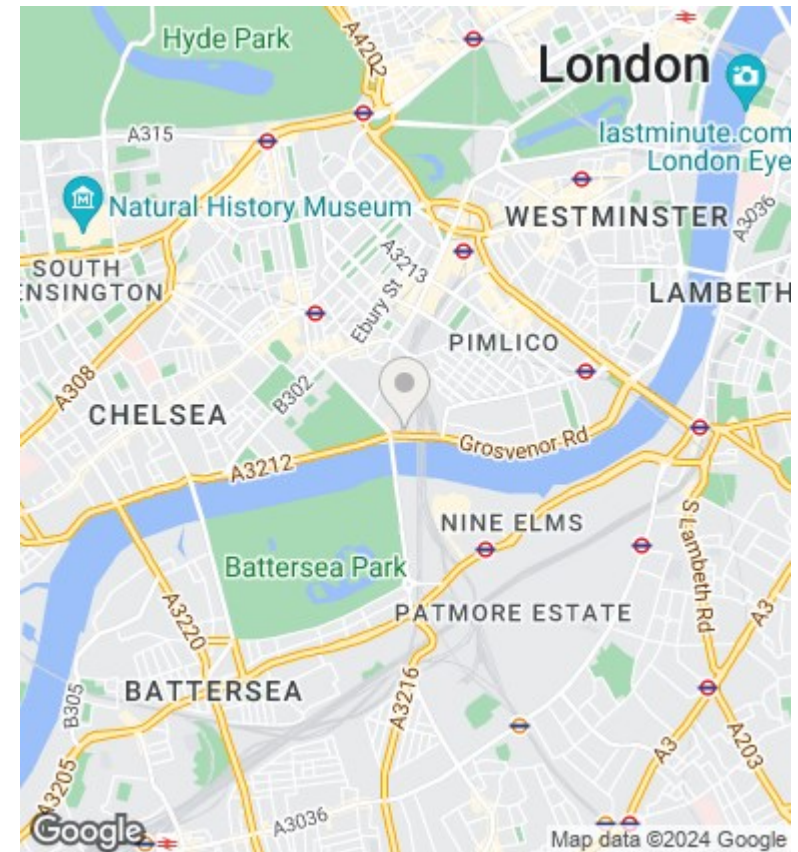
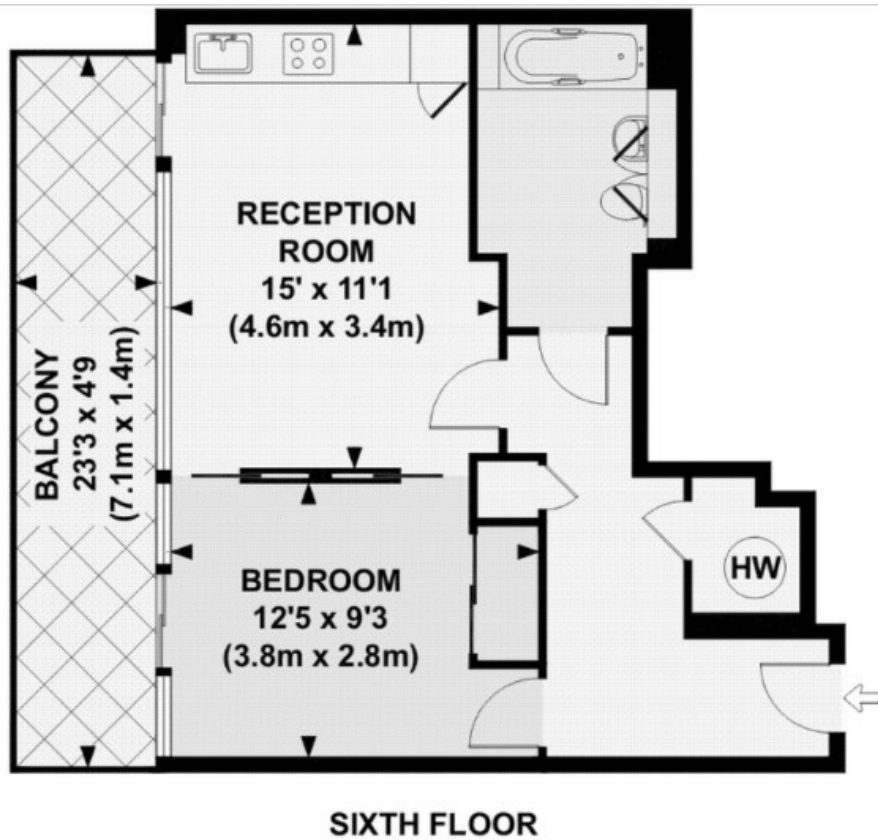




## Hepworth Court, Gatliff Road , Grosvenor Waterside SW1W 8QP

£650 Per Week

- 24 hour concierge
- underfloor heating and air cooling
- walking distance to Sloane Square and Victoria
- video viewing available
- large private balcony
- onsite restaurants and food shop
- gym and spa
- The Dock views



## Viewings

Viewings by arrangement only.  
Call 02077225022 to make an appointment.

## Council Tax Band

EPC Rating:

Energy Efficiency Rating		
	Current	Potential
<i>Very energy efficient - lower running costs</i>		
(92 plus) <b>A</b>		
(81-91) <b>B</b>		
(69-80) <b>C</b>		
(55-68) <b>D</b>		
(39-54) <b>E</b>		
(21-38) <b>F</b>		
(1-20) <b>G</b>		
<i>Not energy efficient - higher running costs</i>		
<b>England &amp; Wales</b>	EU Directive 2002/91/EC	