



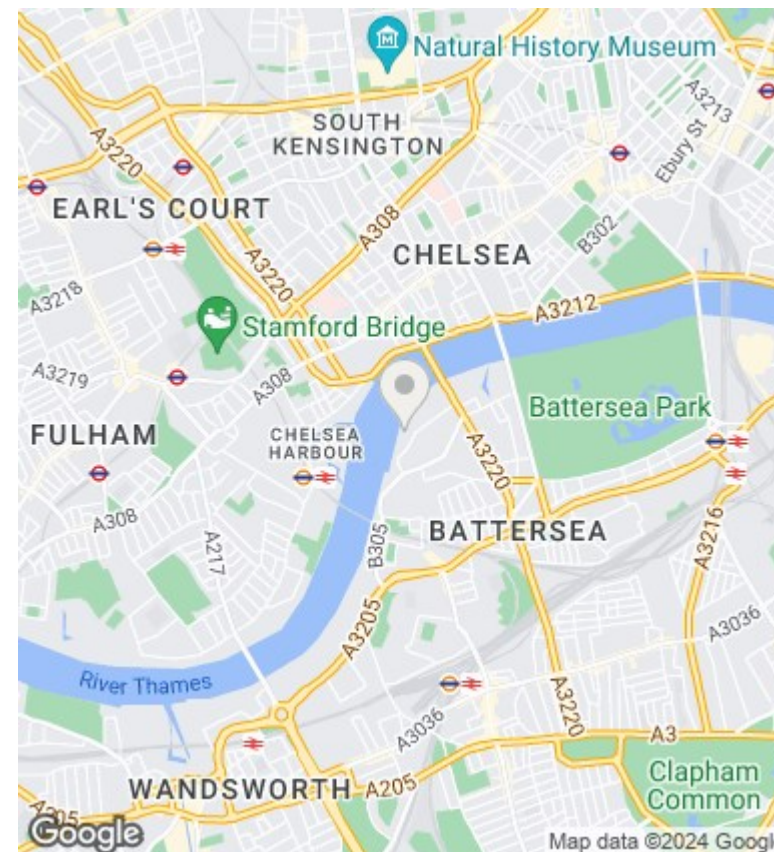
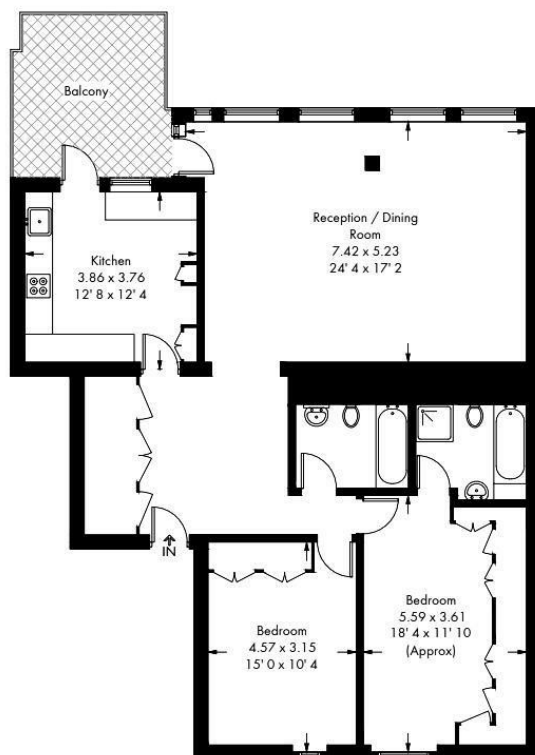
Montevetro Building, Battersea Church Road, Battersea SW11 3YL

£1,142 Per Week

- 24/H CONCIERGE
- RESIDENCE GYM
- PARKING AND VISITORS PARKING
- 2 BEDROOM 2 BATHROOM WITH SEPARATE KITCHEN FULLY FITTED KITCHEN
- VIDEO VIEWING AVAILABLE
- PRIVATE TENNIS COURT
- UNDER FLOOR HEATING AND AIR COOLING
- DIRECT RIVER VIEWS
- COMMUNAL GARDEN
- PRIVATE BALCONY

Montevetro

Approximate Gross Internal Area = 1296 sq ft / 120.4 sq m



Viewings

Viewings by arrangement only.
Call 02077225022 to make an appointment.

Council Tax Band

EPC Rating:

Energy Efficiency Rating		
	Current	Potential
Very energy efficient - lower running costs		
(92 plus) A		
(81-91) B		
(69-80) C		
(55-68) D		
(39-54) E		
(21-38) F		
(1-20) G		
Not energy efficient - higher running costs		
England & Wales	EU Directive 2002/91/EC	