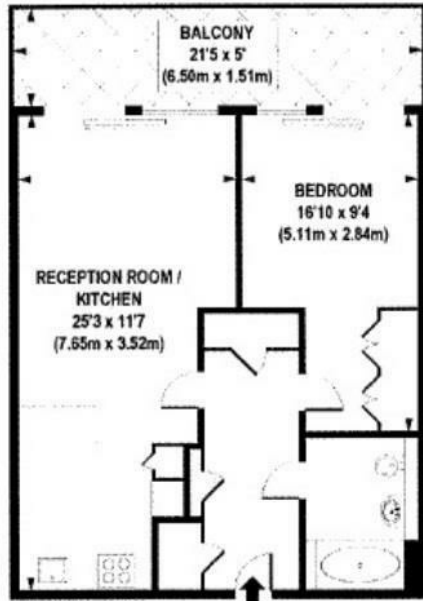


Bramah House , Gatliff Road, Grosvenor Waterside SW1W 8DQ

£3,185 Per Week

- video viewing available
- private balcony with Dock / River and Chelsea Bridge views
- west facing
- 24 hour concierge
- under floor heating
- minutes away from Battersea Park
- gym and spa
- on site Salisbury's
- short walk away from Sloane Square and Victoria station



APPROX. GROSS INTERNAL FLOOR AREA 532 sq. ft / 49.42 sq. m

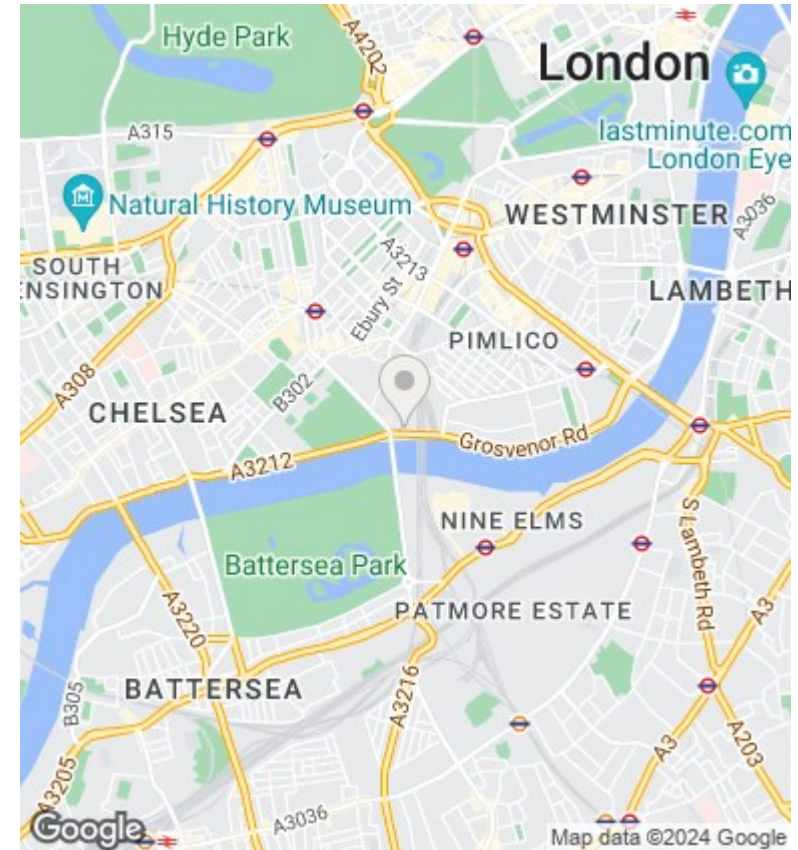
Viewings

Viewings by arrangement only.
Call 02077225022 to make an appointment.

Council Tax Band

C

EPC Rating:



Energy Efficiency Rating		
	Current	Potential
<i>Very energy efficient - lower running costs</i>		
(92 plus) A		
(81-91) B		
(69-80) C		
(55-68) D		
(39-54) E		
(21-38) F		
(1-20) G		
<i>Not energy efficient - higher running costs</i>		
England & Wales	EU Directive 2002/91/EC	