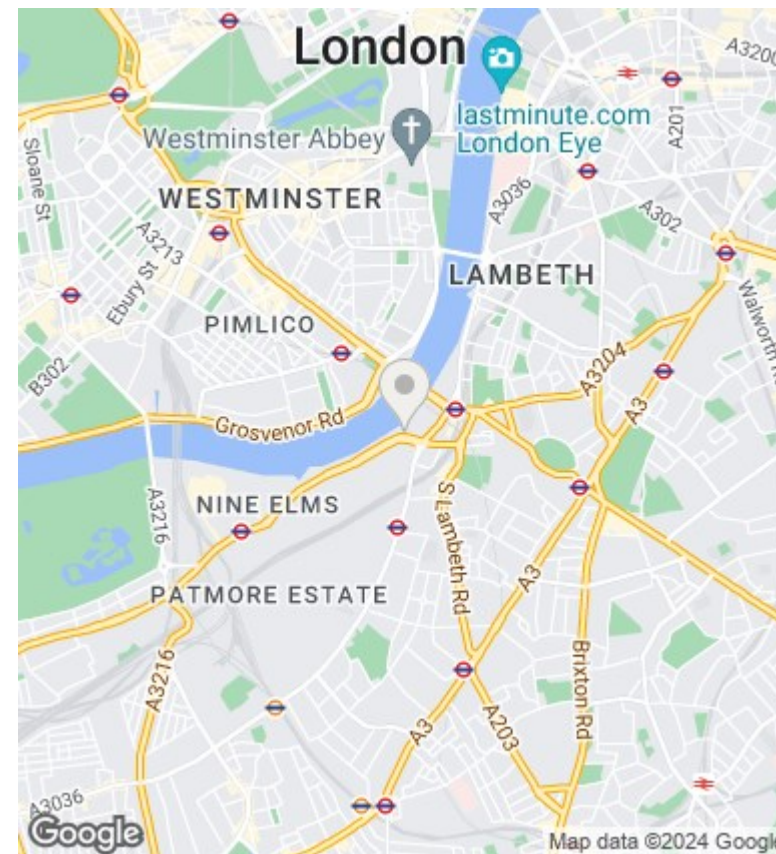
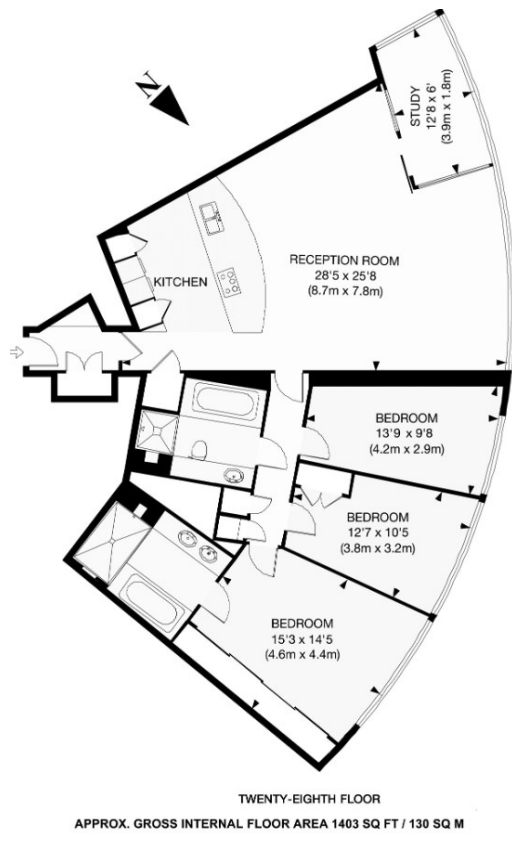




## The Tower, 1 St. George Wharf, Vauxhall, SW8 SW8 2BW

£1,730 Per Week

- 180° River Views
- fully fitted Open-Plan Kitchen
- Fitness and Spa with swimming pool overlooking River
- underground parking space inclusive
- 3 Spacious Double Bedrooms
- 24/7 Concierge
- Private Cinema Access
- 2 Elegant Marble Bathrooms
- dining room / meeting room
- residence lounge



## Viewings

Viewings by arrangement only.  
Call 02077225022 to make an appointment.

## Council Tax Band

H

## EPC Rating:

B

Energy Efficiency Rating		Current	Potential
<i>Very energy efficient - lower running costs</i>			
(92 plus)	A		
(81-91)	B	82	82
(69-80)	C		
(55-68)	D		
(39-54)	E		
(21-38)	F		
(1-20)	G		
<i>Not energy efficient - higher running costs</i>			
<b>England &amp; Wales</b>		EU Directive 2002/91/EC	