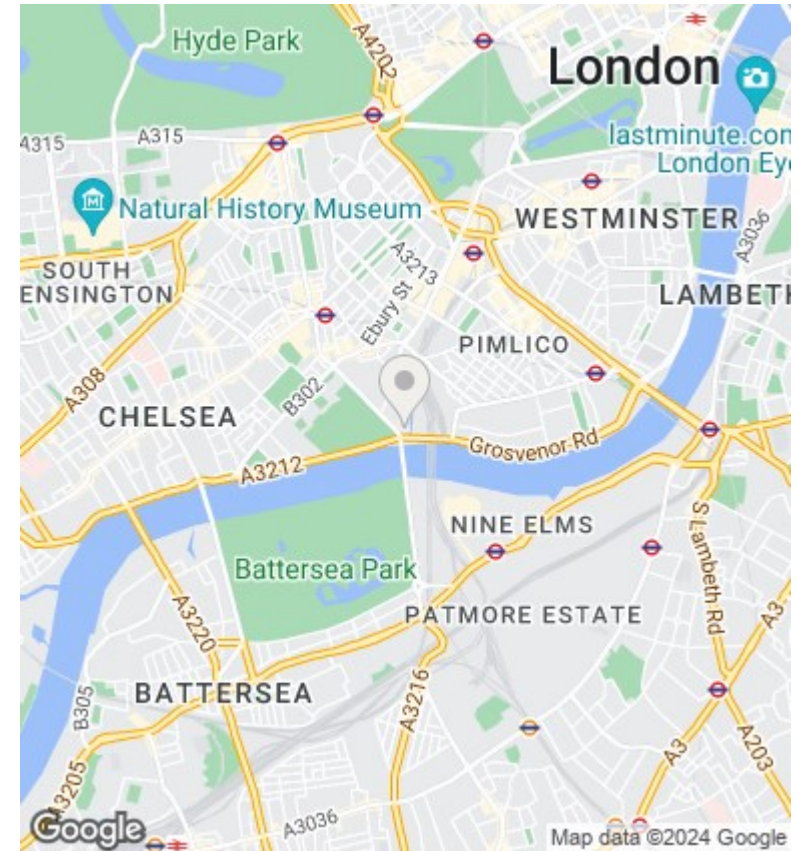
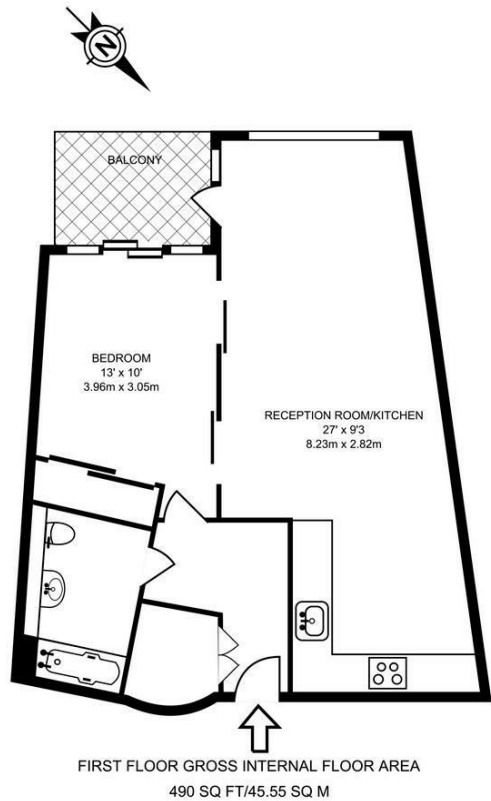




## Hepworth Court , Gatliff Road, Grosvenor Waterside SW1W 8QN

£2,903 Per Month

- Approx. 490 sq foot
- Air Cooling
- Walking distance to Sloane Square & Victoria
- Open Plan reception room
- 24 Hour concierge
- Available Now!
- One double bedroom
- Residents Gym & Spa
- Private Balcony
- Fully Fitted Kitchen



### Viewings

Viewings by arrangement only.  
Call 02077225022 to make an appointment.

### Council Tax Band

E

### EPC Rating:

D

| Energy Efficiency Rating                           |  | Current                    | Potential |
|----------------------------------------------------|--|----------------------------|-----------|
| <i>Very energy efficient - lower running costs</i> |  |                            |           |
| (92 plus) <b>A</b>                                 |  |                            |           |
| (81-91) <b>B</b>                                   |  |                            |           |
| (69-80) <b>C</b>                                   |  |                            | <b>73</b> |
| (55-68) <b>D</b>                                   |  | <b>64</b>                  |           |
| (39-54) <b>E</b>                                   |  |                            |           |
| (21-38) <b>F</b>                                   |  |                            |           |
| (1-20) <b>G</b>                                    |  |                            |           |
| <i>Not energy efficient - higher running costs</i> |  |                            |           |
| <b>England &amp; Wales</b>                         |  | EU Directive<br>2002/91/EC |           |