

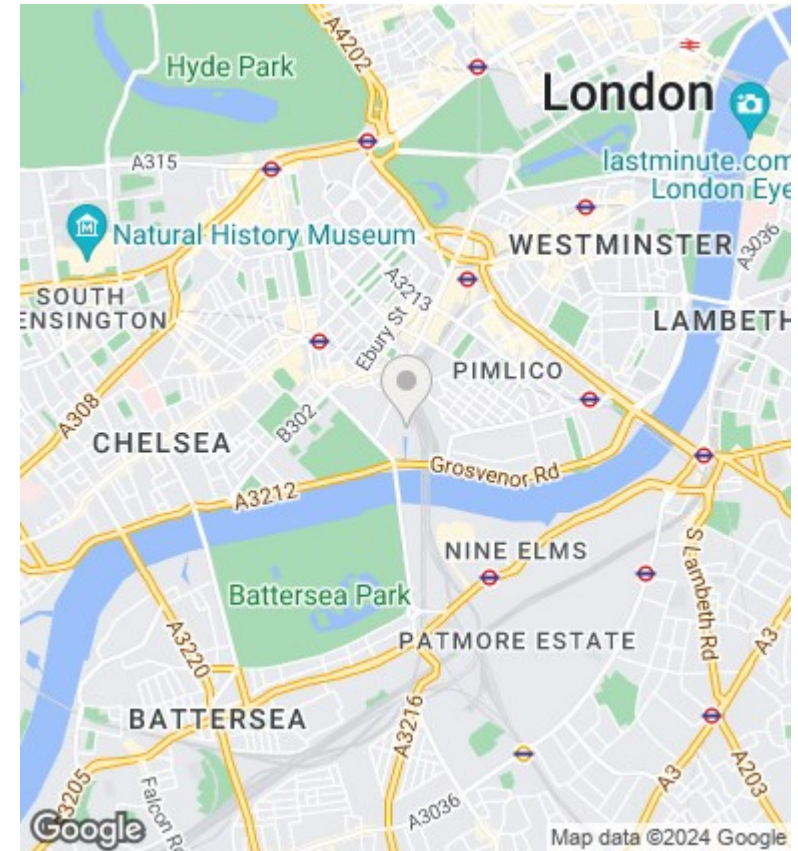
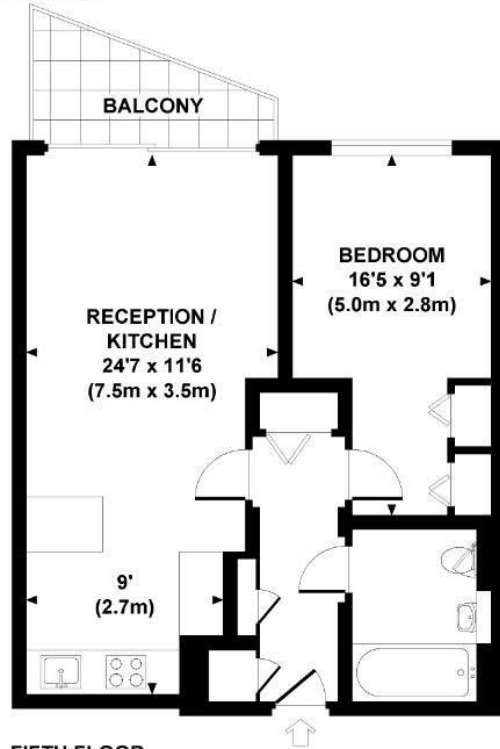


Caro Point, 5 Gatliff Road, Grosvenor Waterside SW1W 8BD

£2,650 Per Month

- 24 Hour concierge
- Private balcony
- Moments away from Victoria and Sloane Square stations
- Video viewing available
- Underfloor heating
- walking distance to Battersea Park
- Gym and Spa Included
- Onsite restaurant and supermarket

CARO POINT, SW1
 Approx. gross internal area
 527 Sq Ft / 49.0 Sq M.



Viewings

Viewings by arrangement only.
 Call 02077225022 to make an appointment.

Council Tax Band

E

EPC Rating:

B

Energy Efficiency Rating		Current	Potential
<i>Very energy efficient - lower running costs</i>			
(92 plus) A		89	89
(81-91) B			
(69-80) C			
(55-68) D			
(39-54) E			
(21-38) F			
(1-20) G			
<i>Not energy efficient - higher running costs</i>			
England & Wales		EU Directive 2002/91/EC	