

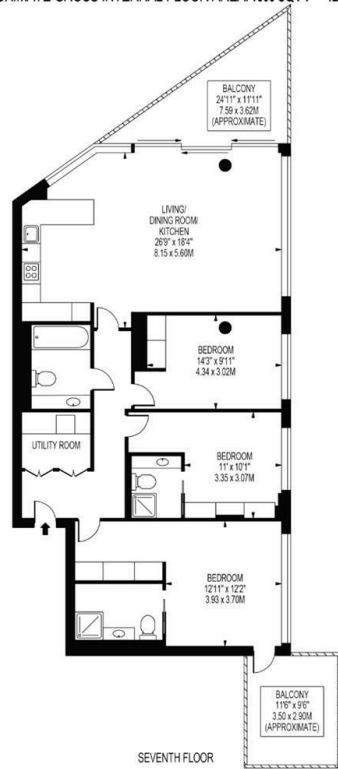


Tudor House, One Tower Bridge, Duchess Walk, London SE1 2SA

£2,380,000

- 24H CONCIERGE
- UNDERFLOOR HEATING AND AIR COOLING
- SWIMMING POOL
- ONSITE RESTAURANTS AND FOOD SHOP
- VIDEO VIEWING AVAILABLE
- 3 BEDROOMS 3 BATHROOMS
- MEETING ROOM AND RESIDENCE LOUNGE
- PRIVATE TERRACE
- RESIDENCE GYM AND SPA
- WALKING DISTANCE TO LONDON BRIDGE STATION

TUDOR HOUSE
 APPROXIMATE GROSS INTERNAL FLOOR AREA: 1305 SQ FT - 121.24 SQ.M



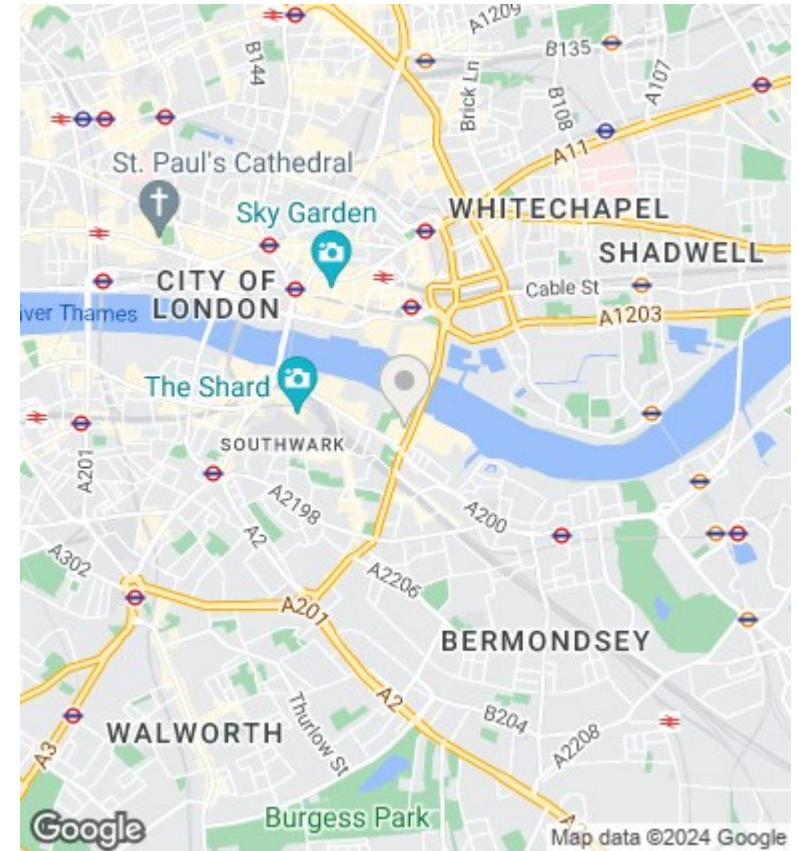
Viewings

Viewings by arrangement only.
 Call 02077225022 to make an appointment.

Council Tax Band

E

EPC Rating:



Energy Efficiency Rating		
	Current	Potential
<i>Very energy efficient - lower running costs</i>		
(92 plus) A		
(81-91) B		
(69-80) C		
(55-68) D		
(39-54) E		
(21-38) F		
(1-20) G		
<i>Not energy efficient - higher running costs</i>		
England & Wales	EU Directive 2002/91/EC	