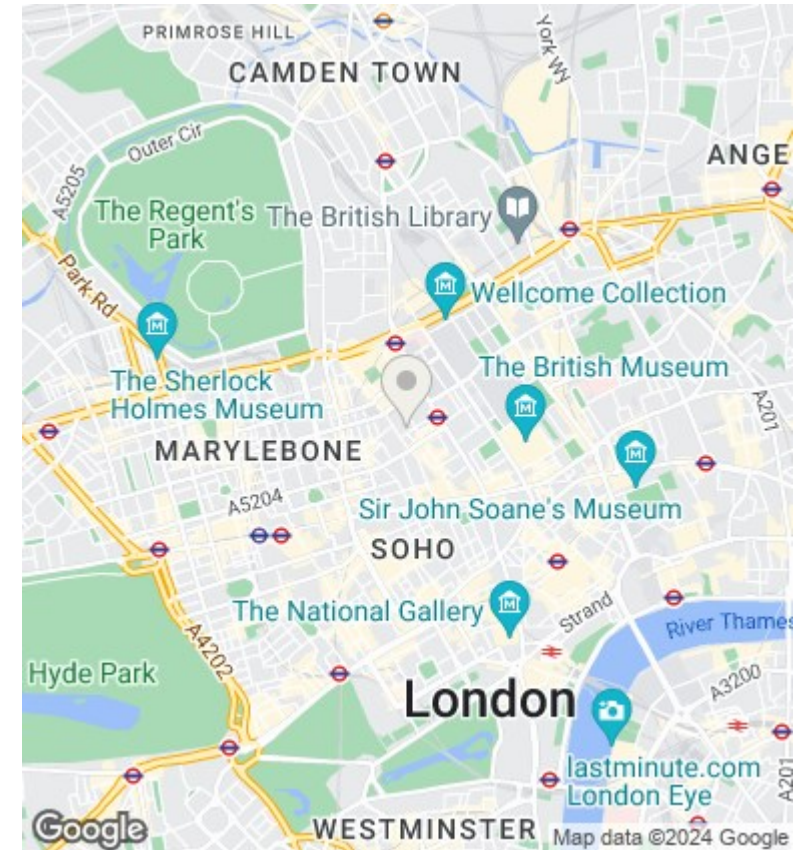
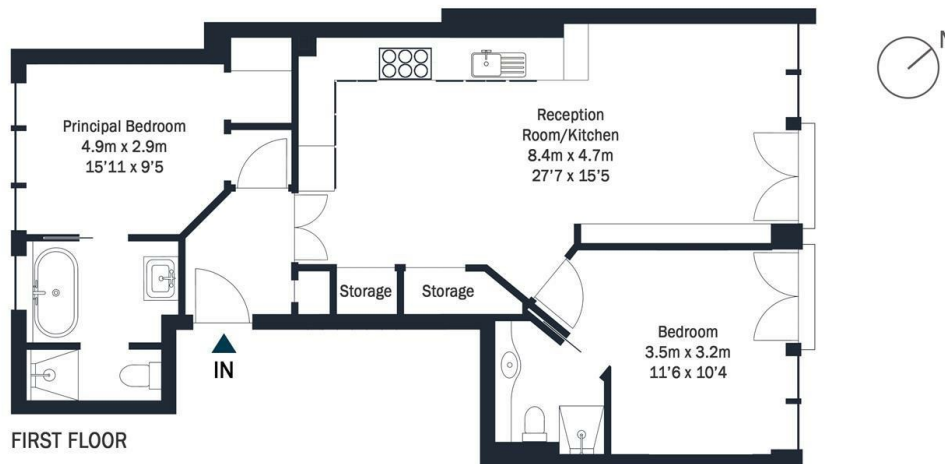




## Tottenham Mews, London W1T 4AB

£6,000 Per Month

- Furnished to a high standard
- Approx 810 sq foot
- Juliette Balcony
- Available now!
- 2 double bedrooms & 2 Bathrooms
- Carrara Marble Worktops and Backsplash
- New build apartment!
- Herringbone Oak Floors
- Floor-to-Ceiling Mews Facing Windows
- Located in the heart of Fitzrovia!



## Viewings

Viewings by arrangement only.  
Call 02077225022 to make an appointment.

## Council Tax Band

New Build

EPC Rating:

B

Energy Efficiency Rating		Current	Potential
<i>Very energy efficient - lower running costs</i>			
(92 plus) <b>A</b>			
(81-91) <b>B</b>		86	86
(69-80) <b>C</b>			
(55-68) <b>D</b>			
(39-54) <b>E</b>			
(21-38) <b>F</b>			
(1-20) <b>G</b>			
<i>Not energy efficient - higher running costs</i>			
<b>England &amp; Wales</b>		EU Directive 2002/91/EC	