



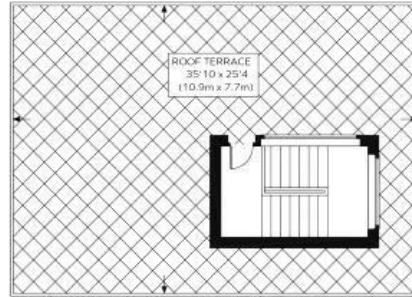
## Hirst Court, Grosvenor Waterside, Gatliff Road, Sloane Square SW1W 8QD

£4,000,000

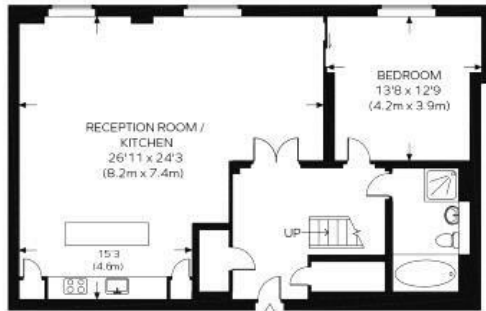
- 24H CONCIERGE
- 4 BEDROOM 3 BATHROOMS
- AIR COOLING AND UNDERFLOOR HEATING
- ONSITE RESTAURANT AND FOOD SHOP
- PENTHOUSE
- GYM AND SPA
- WALKING DISTANCE TO SLOANE SQUARE , KINGS ROAD AND KNIGHTSBRIDGE
- PRIVATE TERRACE WITH RIVER VIEWS
- ALLOCATED PARKING SPACE
- MOMNETS AWAY FROM BATTERSEA PARK

# HIRST COURT

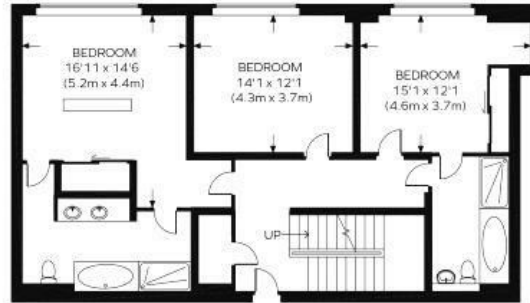
Approximate Gross Internal Area = 2164 sq. ft. (201 sq. m.)



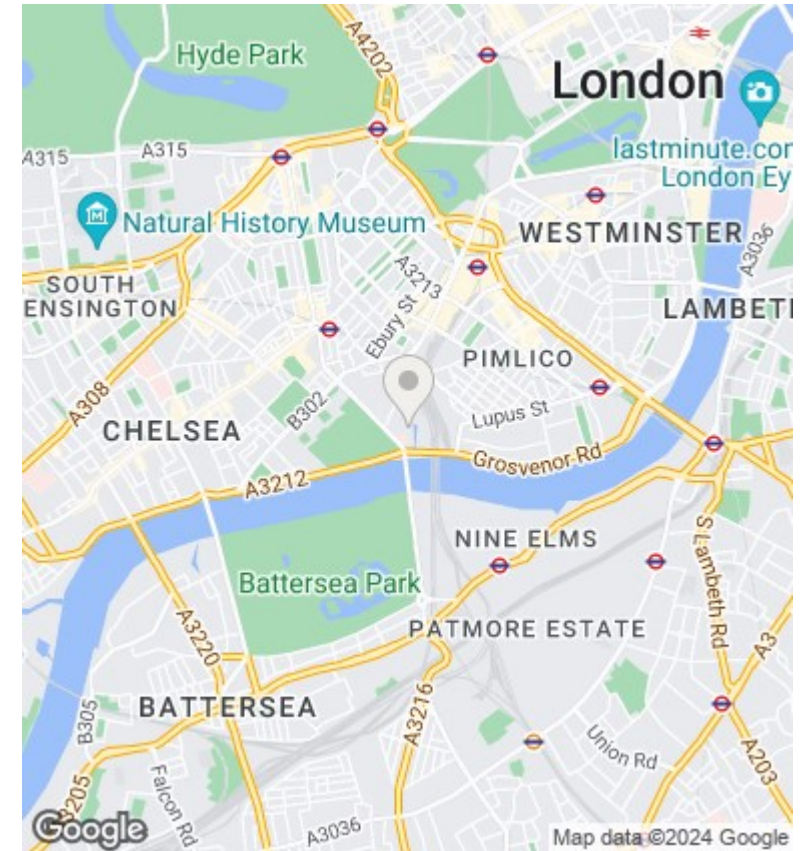
EIGHTH FLOOR



SIXTH FLOOR



SEVENTH FLOOR



## Viewings

Viewings by arrangement only.  
Call 02077225022 to make an appointment.

## Council Tax Band

H

## EPC Rating:

Energy Efficiency Rating		
	Current	Potential
<i>Very energy efficient - lower running costs</i>		
(92 plus) <b>A</b>		
(81-91) <b>B</b>		
(69-80) <b>C</b>		
(55-68) <b>D</b>		
(39-54) <b>E</b>		
(21-38) <b>F</b>		
(1-20) <b>G</b>		
<i>Not energy efficient - higher running costs</i>		
<b>England &amp; Wales</b>	EU Directive 2002/91/EC	