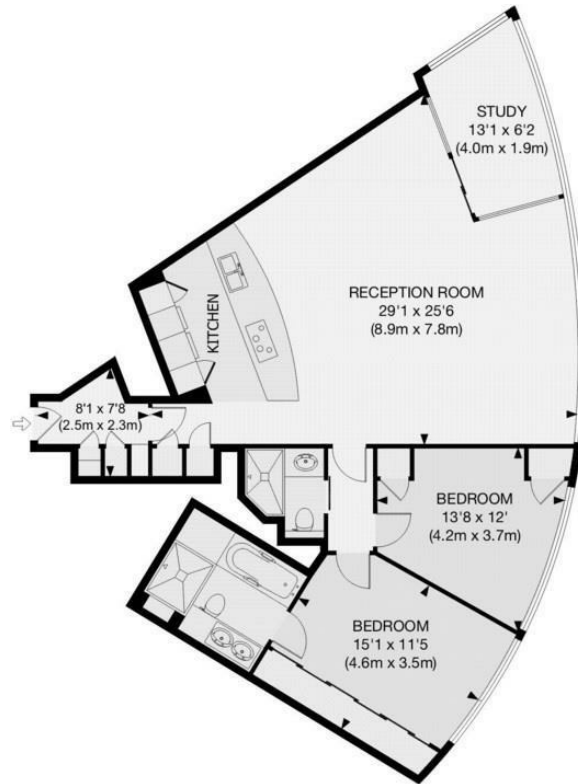




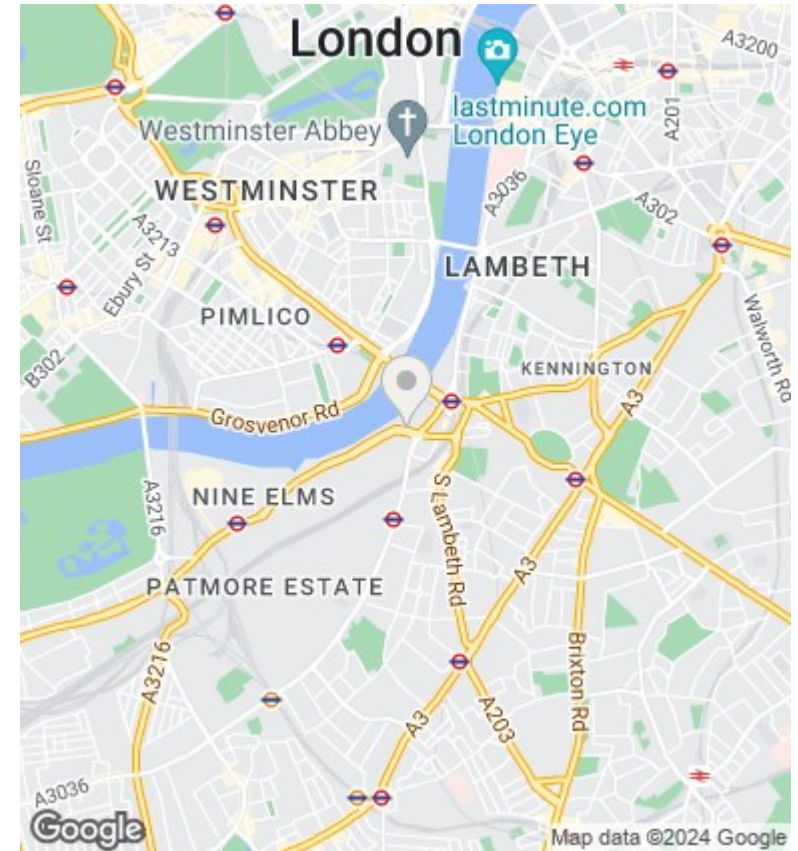
## The Tower, St. George Wharf, London SW8 2DU

£5,500 Per Month

- video viewing available
- cinema
- under floor heating
- gym and spa
- 24 hour concierge
- business lounge
- air cooling
- swimming pool overlooking river
- dining room
- allocated parking space



APPROX. GROSS INTERNAL FLOOR AREA 1075 SQ FT / 100 SQ M



## Viewings

Viewings by arrangement only.  
Call 02077225022 to make an appointment.

## Council Tax Band

## EPC Rating:

B

| Energy Efficiency Rating                           |   | Current                    | Potential |
|--|---|----------------------------|-----------|
| <i>Very energy efficient - lower running costs</i> |   |                            |           |
| (92 plus)  | A |                            |           |
| (81-91)  | B | 84                         | 84        |
| (69-80)  | C |                            |           |
| (55-68)  | D |                            |           |
| (39-54)  | E |                            |           |
| (21-38)  | F |                            |           |
| (1-20)   | G |                            |           |
| <i>Not energy efficient - higher running costs</i> |   |                            |           |
| <b>England &amp; Wales</b>                         |   | EU Directive<br>2002/91/EC |           |