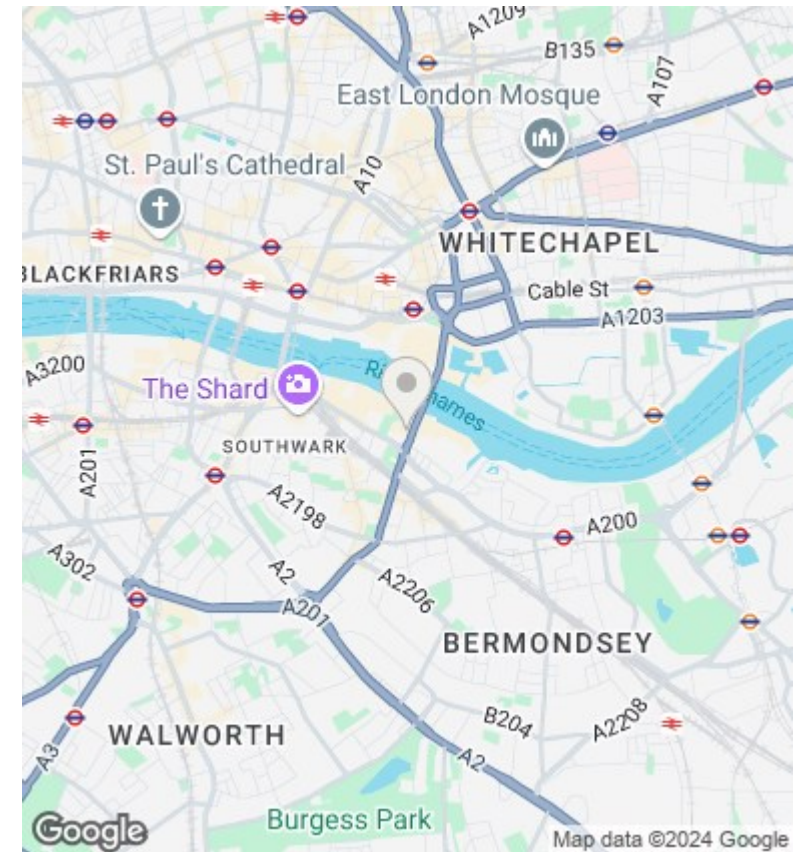
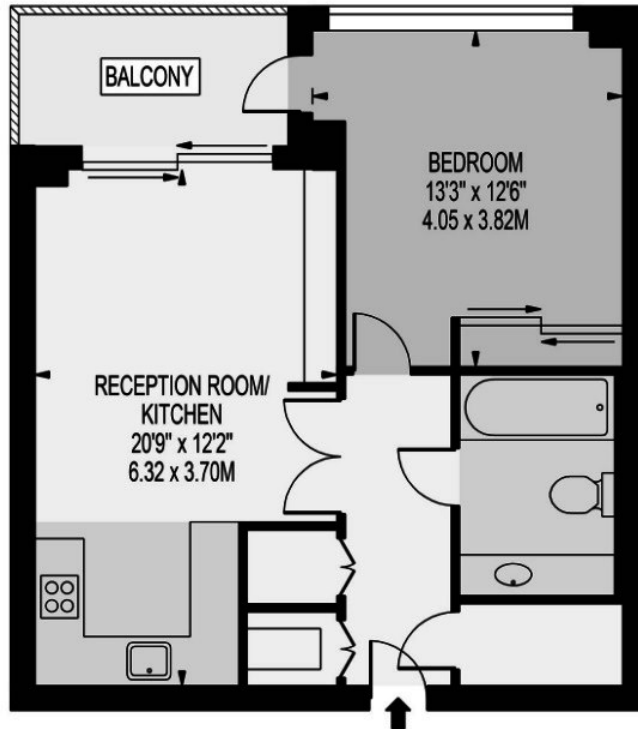


## Tudor House , One Tower Bridge, Duchess Walk SE1 2SA

£725,000

- 24/7 concierge
- business lounge
- private balcony overlooking the garden
- gym and spa
- virtual golf course
- West facing
- swimming pool
- under floor heating

APPROXIMATE GROSS INTERNAL FLOOR AREA: 558 SQ FT - 51.82 SQ M



### Viewings

Viewings by arrangement only.  
Call 02077225022 to make an appointment.

### Council Tax Band

D

### EPC Rating:

Energy Efficiency Rating		
	Current	Potential
<i>Very energy efficient - lower running costs</i>		
(92 plus) <b>A</b>		
(81-91) <b>B</b>		
(69-80) <b>C</b>		
(55-68) <b>D</b>		
(39-54) <b>E</b>		
(21-38) <b>F</b>		
(1-20) <b>G</b>		
<i>Not energy efficient - higher running costs</i>		
<b>England &amp; Wales</b>	EU Directive 2002/91/EC	