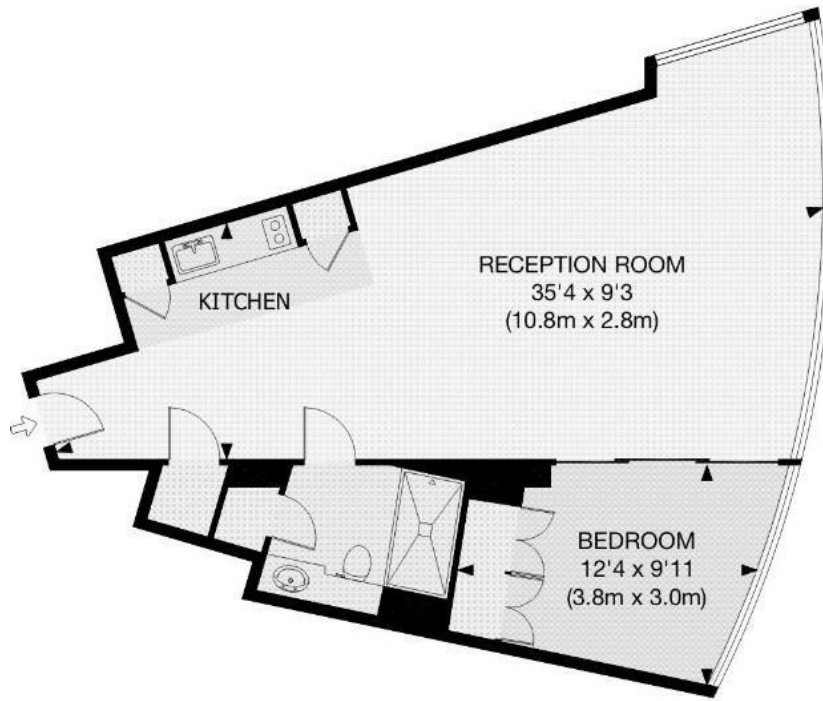




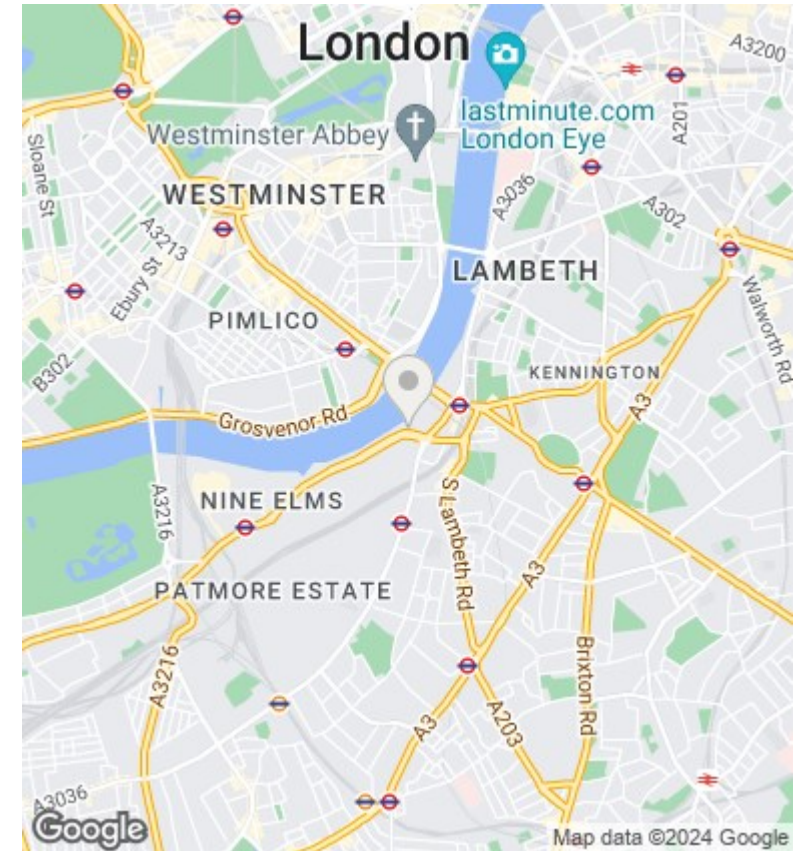
## The Tower, 1 St. George Wharf, SW8 SW8 2DU

£3,500 Per Month

- Secure underground parking
- Open-plan kitchen
- Relaxing spa with pool
- Prestigious residential tower
- Spacious double bedroom
- 24/7 concierge service
- Business lounge access
- Modern marble bathroom
- On-site gym
- Private cinema facility



APPROX. GROSS INTERNAL FLOOR AREA 656 SQ FT / 61 SQ M



## Viewings

Viewings by arrangement only.  
Call 02077225022 to make an appointment.

## Council Tax Band

C

## EPC Rating:

C

Energy Efficiency Rating		
	Current	Potential
<i>Very energy efficient - lower running costs</i>		
(92 plus) <b>A</b>		
(81-91) <b>B</b>	80	80
(69-80) <b>C</b>		
(55-68) <b>D</b>		
(39-54) <b>E</b>		
(21-38) <b>F</b>		
(1-20) <b>G</b>		
<i>Not energy efficient - higher running costs</i>		
<b>England &amp; Wales</b>	EU Directive 2002/91/EC	