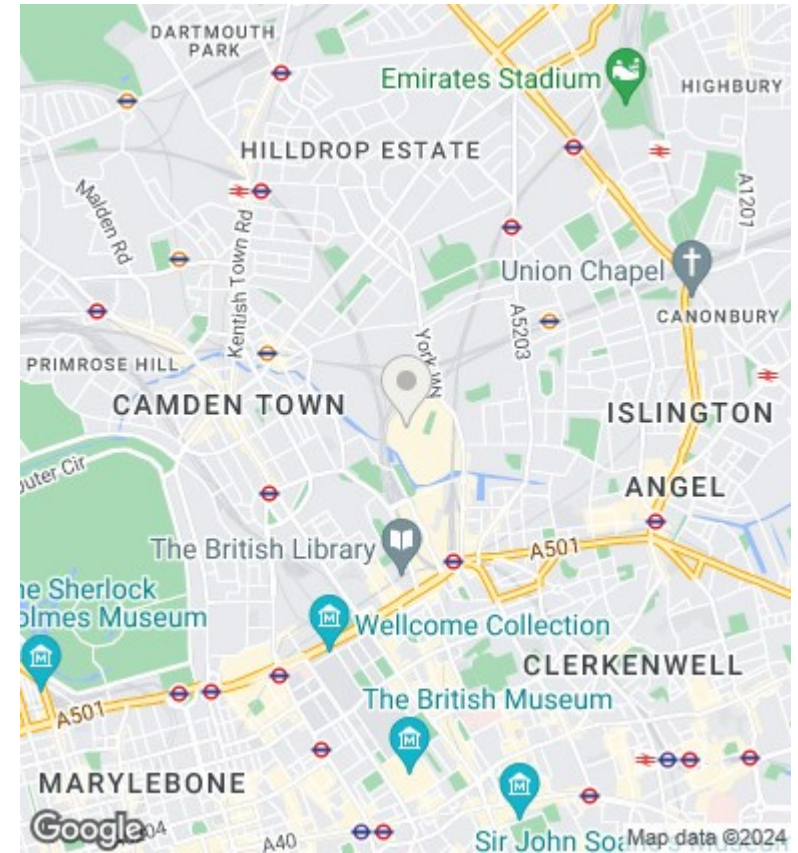
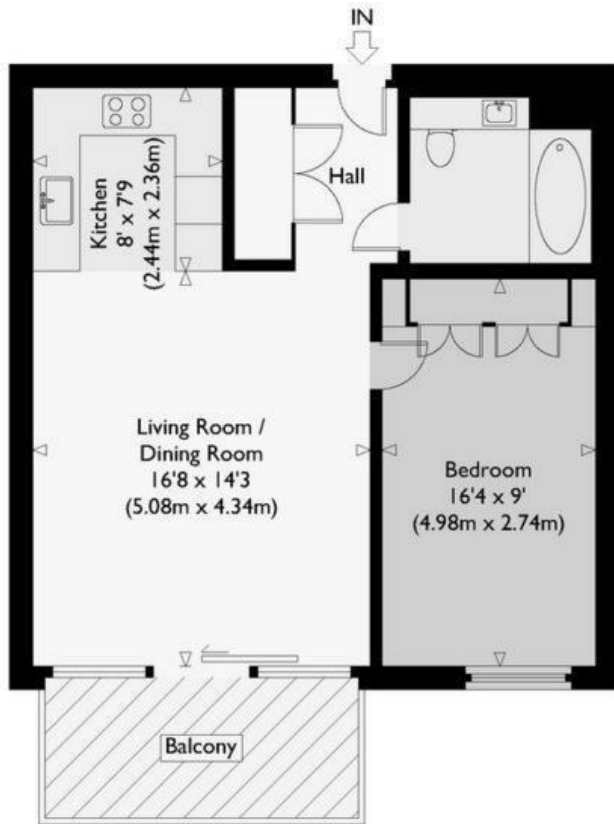




The Plimsoll Building, Handyside Street, King's Cross, N1C N1C 4BR

£3,500 Per Month

- Stunning 1-bedroom apartment in King's Cross
- Spacious living area perfect for entertaining
- Stylish and contemporary bathroom
- Enjoy rooftop conservatory and courtyard garden amenities
- Podium garden views from the 5th floor
- Sleek open-plan kitchen with modern appliances
- Access to 24/7 concierge for convenience
- Private balcony for outdoor relaxation
- Large bedroom with ample fitted wardrobe space
- Stay fit with on-site gym facilities



Viewings

Viewings by arrangement only.
Call 02077225022 to make an appointment.

Council Tax Band

C

EPC Rating:

B

Energy Efficiency Rating		Current	Potential
<i>Very energy efficient - lower running costs</i>			
(92 plus)	A		
(81-91)	B	83	83
(69-80)	C		
(55-68)	D		
(39-54)	E		
(21-38)	F		
(1-20)	G		
<i>Not energy efficient - higher running costs</i>			
England & Wales		EU Directive 2002/91/EC	