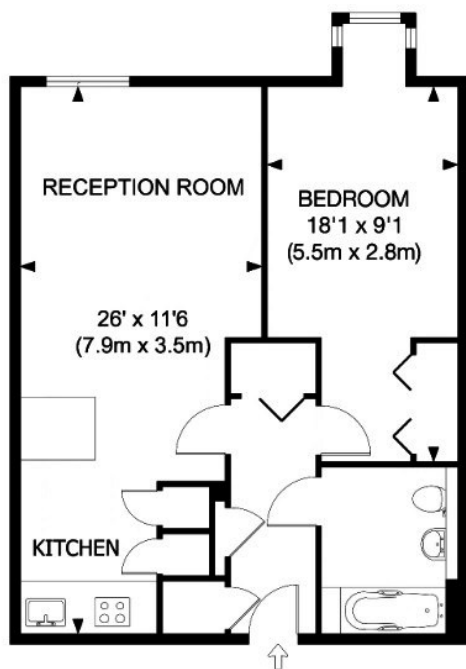




## Moore House , 2 Gatliff Road, Grosvenor Waterside SW1W 8DT

£2,650 Per Month

- 24/7 concierge
- on site Sainsbury's
- close to Sloane Square and Victoria stations
- gym and spa
- laundry service
- minutes away from Battersea Park
- on site restaurant
- under floor heating



**APPROX. GROSS INTERNAL FLOOR AREA 549 SQ FT / 51 SQ M**

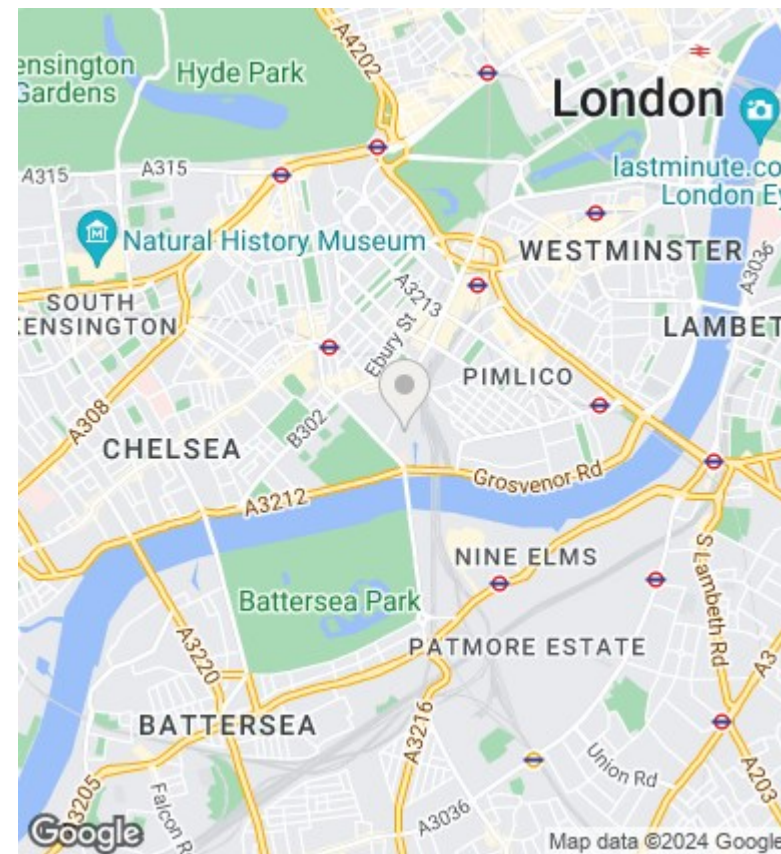
### Viewings

Viewings by arrangement only.  
Call 02077225022 to make an appointment.

### Council Tax Band

E

### EPC Rating:



Energy Efficiency Rating		
	Current	Potential
<i>Very energy efficient - lower running costs</i>		
(92 plus) <b>A</b>		
(81-91) <b>B</b>		
(69-80) <b>C</b>		
(55-68) <b>D</b>		
(39-54) <b>E</b>		
(21-38) <b>F</b>		
(1-20) <b>G</b>		
<i>Not energy efficient - higher running costs</i>		
<b>England &amp; Wales</b>	EU Directive 2002/91/EC	