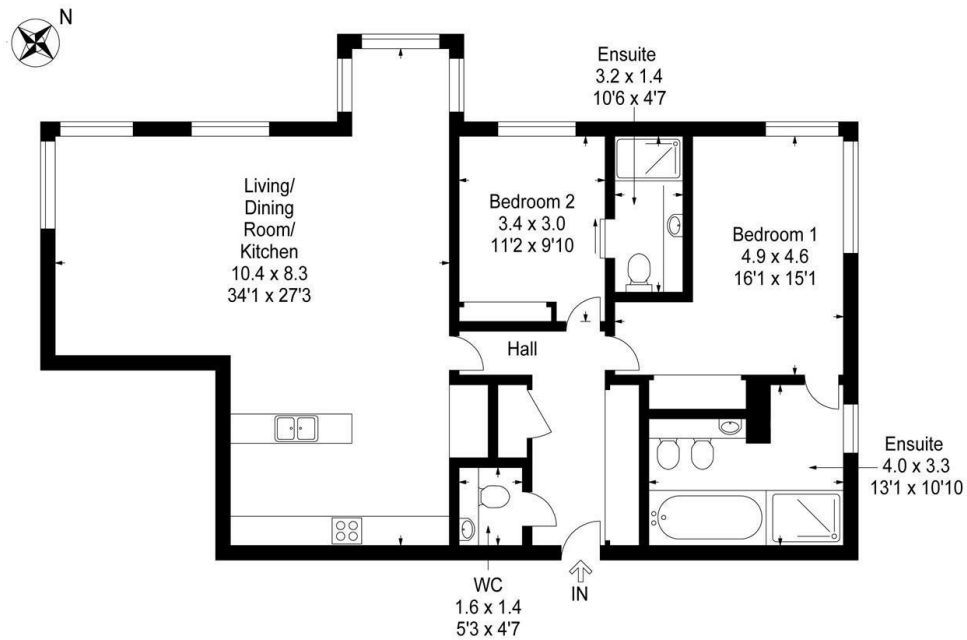




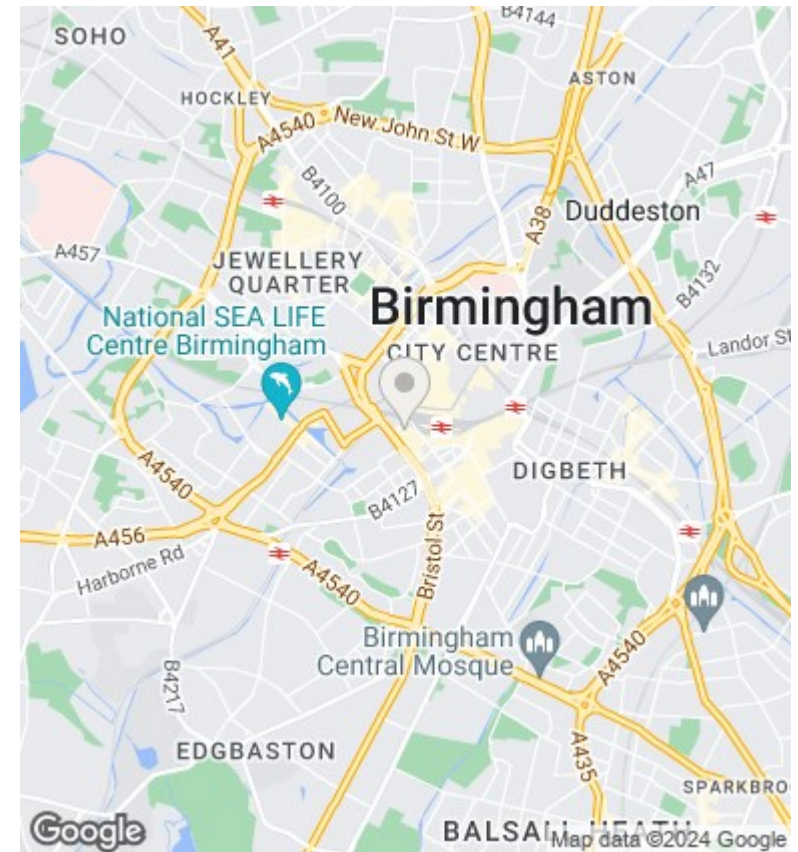
## The Orion, 90 Navigation Street B5 4AF

£3,300 PCM

- 24 Hour Concierge
- 24th Floor
- Fully Furnished to a high standard
- 1377 sq foot
- Underground Parking
- Amazing view of Birmingham City Center



**VistaBee**  
 This plan is for layout guidance only and is not drawn to scale. Whilst every care is taken in the preparation of this plan, please check all dimension and shapes before making any decision reliant upon them. All room dimensions taken through cupboard/wardrobes to wall surface where possible or to surfaces indicated by arrow heads. (ID 110927)  
 © VistaBee 2016



### Viewings

Viewings by arrangement only.  
 Call 02077225022 to make an appointment.

### Council Tax Band

D

### EPC Rating:

C

Energy Efficiency Rating		Current	Potential
<i>Very energy efficient - lower running costs</i>			
(92 plus)	<b>A</b>		
(81-91)	<b>B</b>		
(69-80)	<b>C</b>	<b>69</b>	<b>69</b>
(55-68)	<b>D</b>		
(39-54)	<b>E</b>		
(21-38)	<b>F</b>		
(1-20)	<b>G</b>		
<i>Not energy efficient - higher running costs</i>			
<b>England &amp; Wales</b>		EU Directive 2002/91/EC	