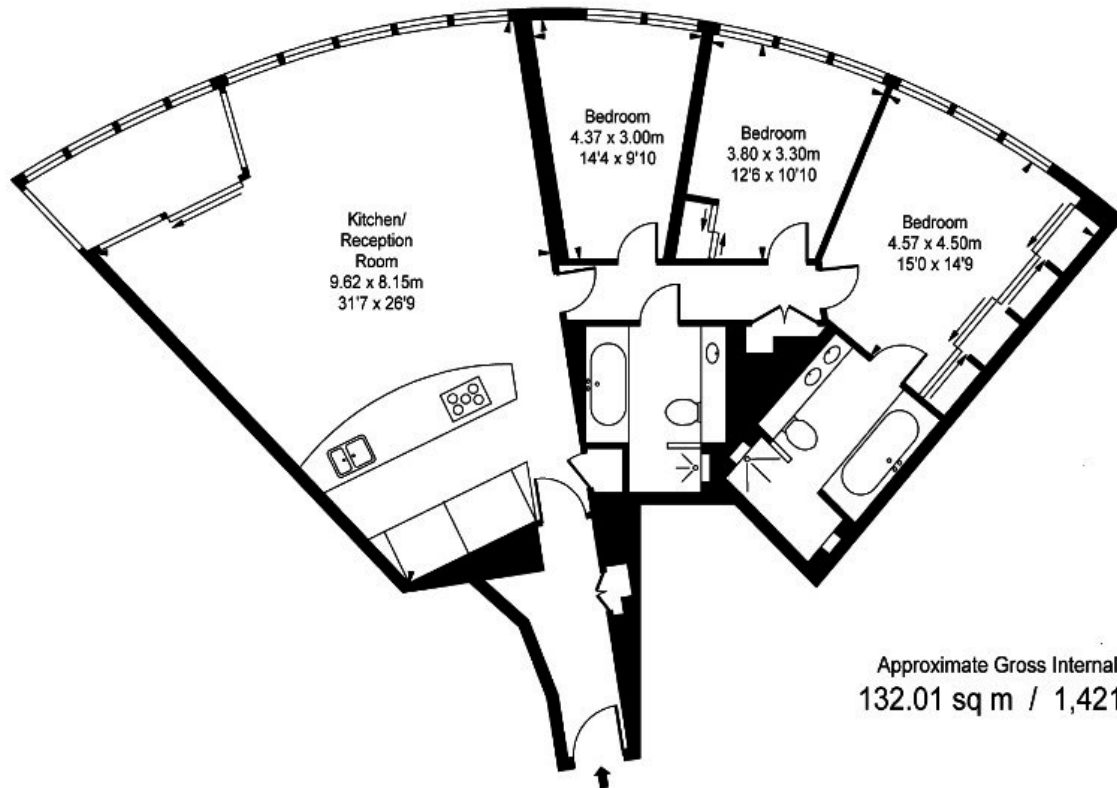




The Tower, St George's Wharf, Vauxhall SW8 2DU

£6,370 Per Month

- 24/7 concierge
- Under floor heating and air cooling
- Dining room / meeting room with separate kitchen
- Valet parking
- 3 Double Bedrooms
- Smart home system
- Cinema
- River views
- Business lounge
- Gym & Swimming Pool with River views



Approximate Gross Internal Area
132.01 sq m / 1,421 sq ft

Viewings

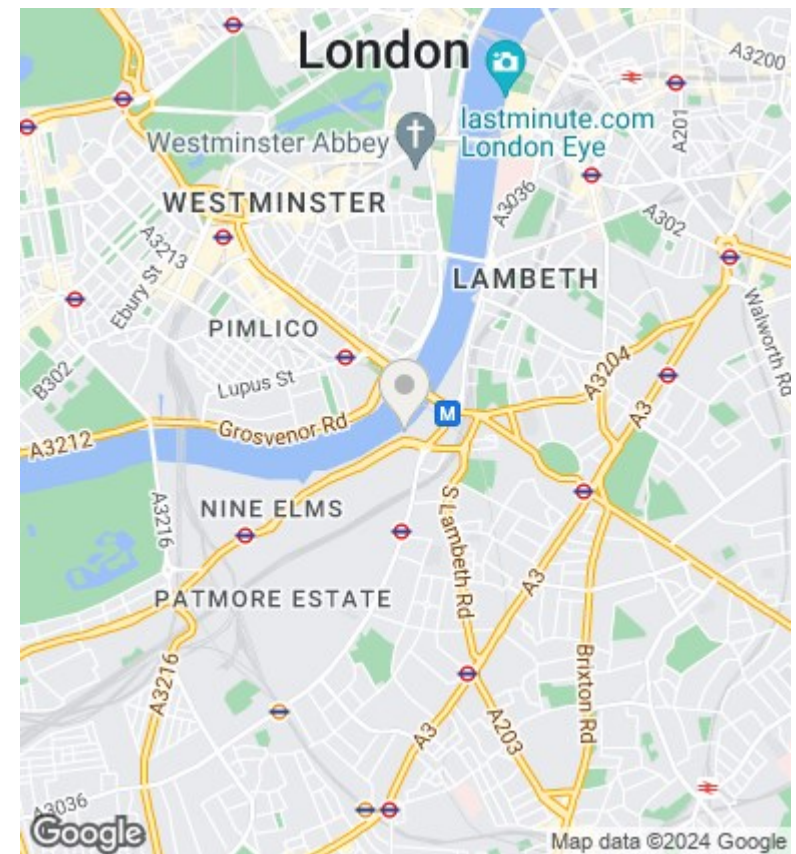
Viewings by arrangement only.
Call 02077225022 to make an appointment.

Council Tax Band

H

EPC Rating:

B



Energy Efficiency Rating		
	Current	Potential
Very energy efficient - lower running costs		
(92 plus) A		
(81-91) B	81	82
(69-80) C		
(55-68) D		
(39-54) E		
(21-38) F		
(1-20) G		
Not energy efficient - higher running costs		
England & Wales	EU Directive 2002/91/EC	