



Hepworth Court, Grosvenor Waterside, Gatliff Road SW1W 8QP

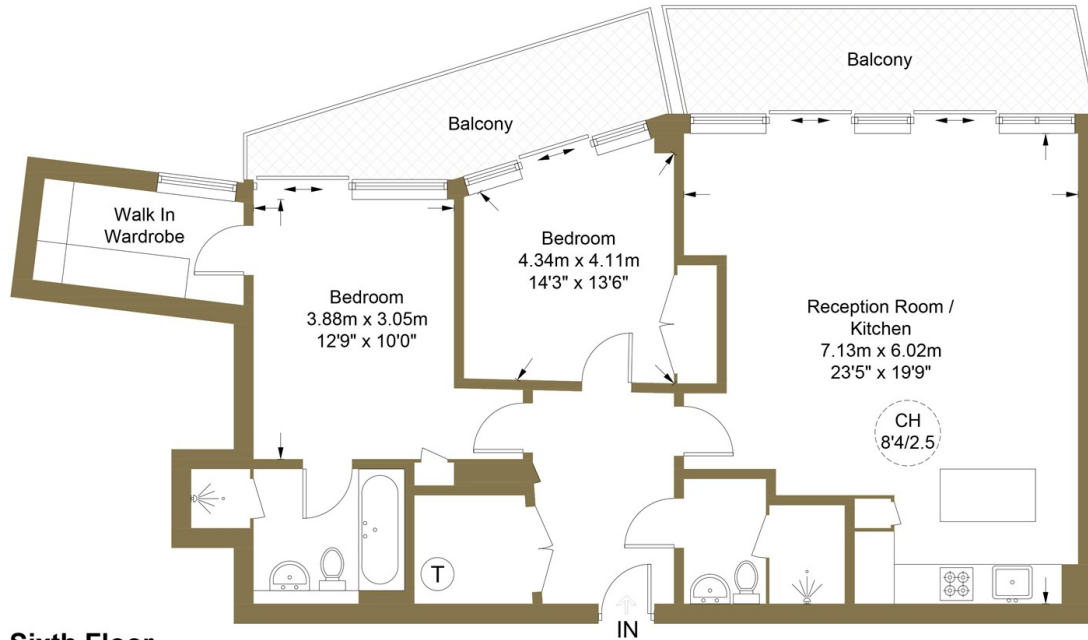
£5,475 Per Month

- 24/7 concierge
- wooden flooring
- gym and spa
- video viewing available
- allocated parking space
- moments away from Victoria and Sloane Square stations
- 2 balconies
- air cooling and under floor heating



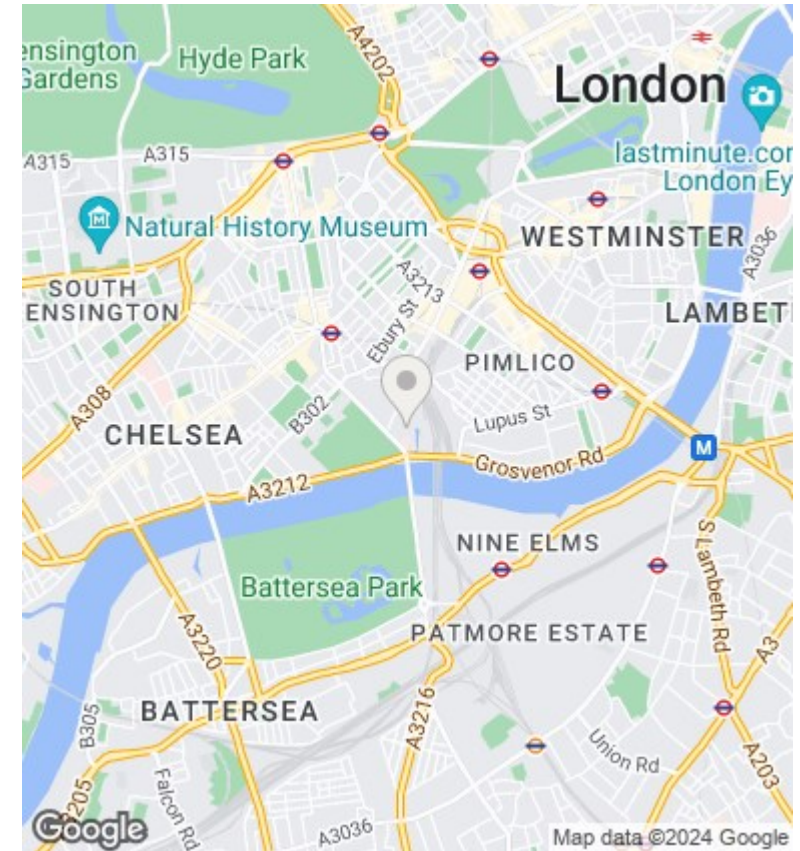
Hepworth Court, SW1W

Approximate Gross Internal Area = 91.9 sq m / 989 sq ft



Sixth Floor

This plan is for layout guidance only. Not drawn to scale unless stated. Windows and door openings are approximate. Whilst every care is taken in the preparation of this plan, please check all dimensions, shapes and compass bearings before making any decisions reliant upon them. (ID821823)



Viewings

Viewings by arrangement only.
Call 02077225022 to make an appointment.

Council Tax Band

EPC Rating:

Energy Efficiency Rating		
	Current	Potential
<i>Very energy efficient - lower running costs</i>		
(92 plus) A		
(81-91) B		
(69-80) C		
(55-68) D		
(39-54) E		
(21-38) F		
(1-20) G		
<i>Not energy efficient - higher running costs</i>		
England & Wales	EU Directive 2002/91/EC	