

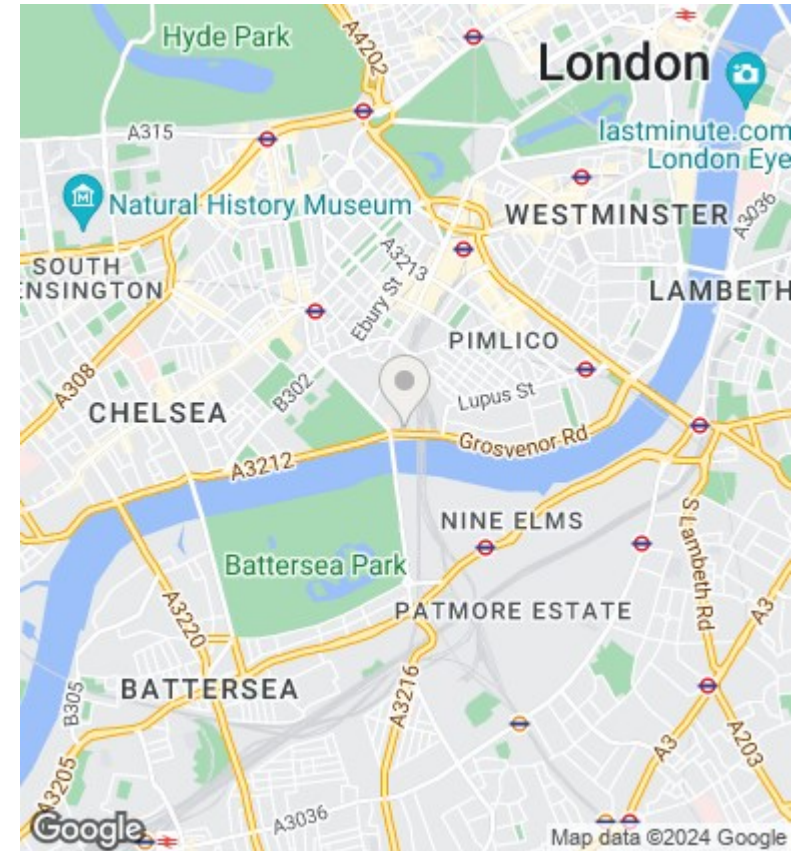
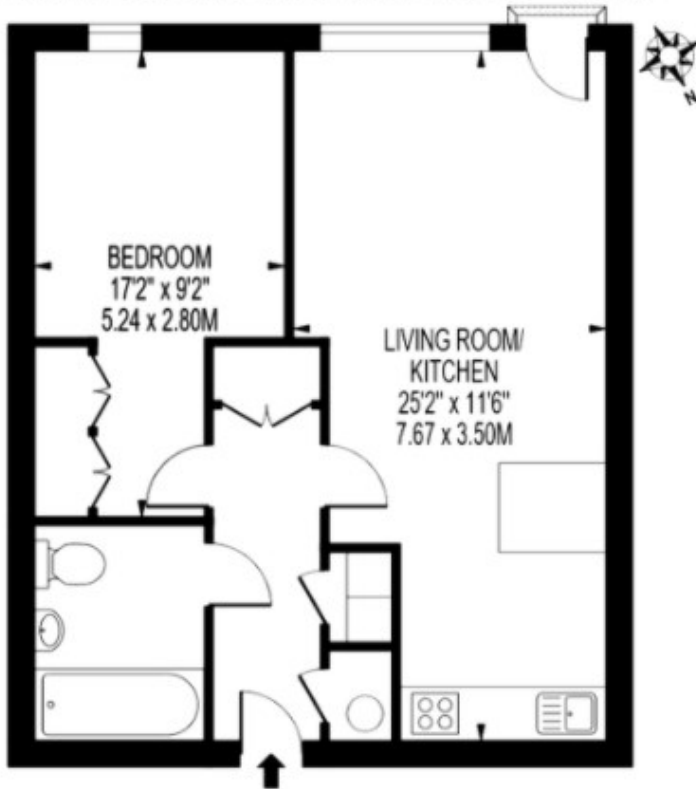


Moore House, Grosvenor Waterside , Gatliff Road SW1W 8DU

£2,750 Per Month

- 24 HR Concierge & Security
- Available now
- Gym & Spa
- On-site Restaurant and Sainsbury's
- Quaint Development
- Sloane Square, Victoria and Battersea on your doorstep

APPROXIMATE GROSS INTERNAL FLOOR AREA: 530 SQ FT - 49.28 SQ M



Viewings

Viewings by arrangement only.
Call 02077225022 to make an appointment.

Council Tax Band

E

EPC Rating:

B

Energy Efficiency Rating		Current	Potential
<i>Very energy efficient - lower running costs</i>			
(92 plus) A			
(81-91) B		82	83
(69-80) C			
(55-68) D			
(39-54) E			
(21-38) F			
(1-20) G			
<i>Not energy efficient - higher running costs</i>			
England & Wales		EU Directive 2002/91/EC	