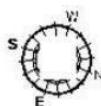
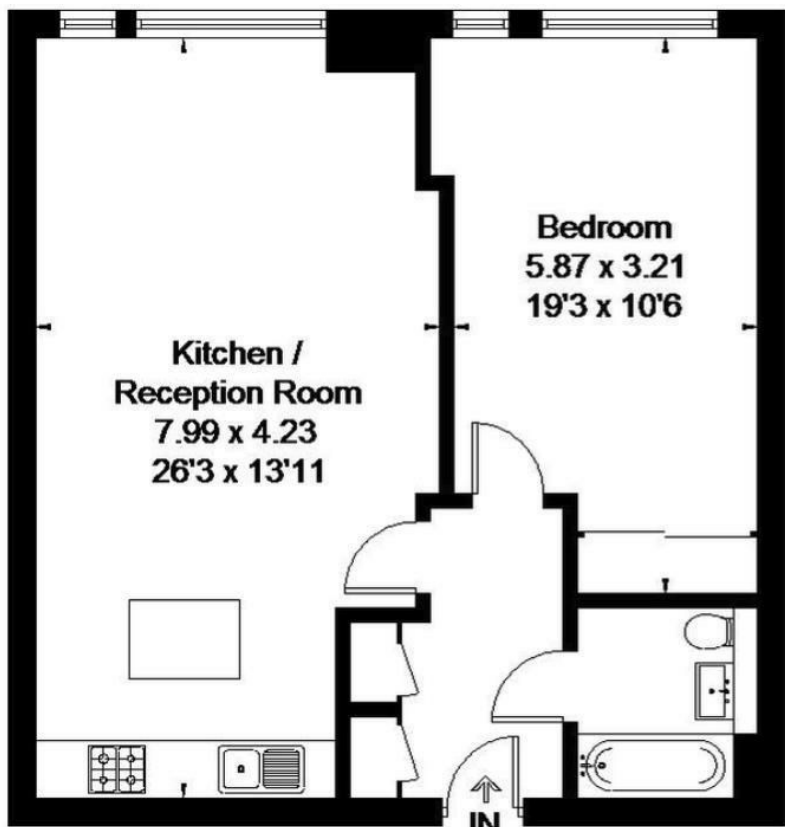




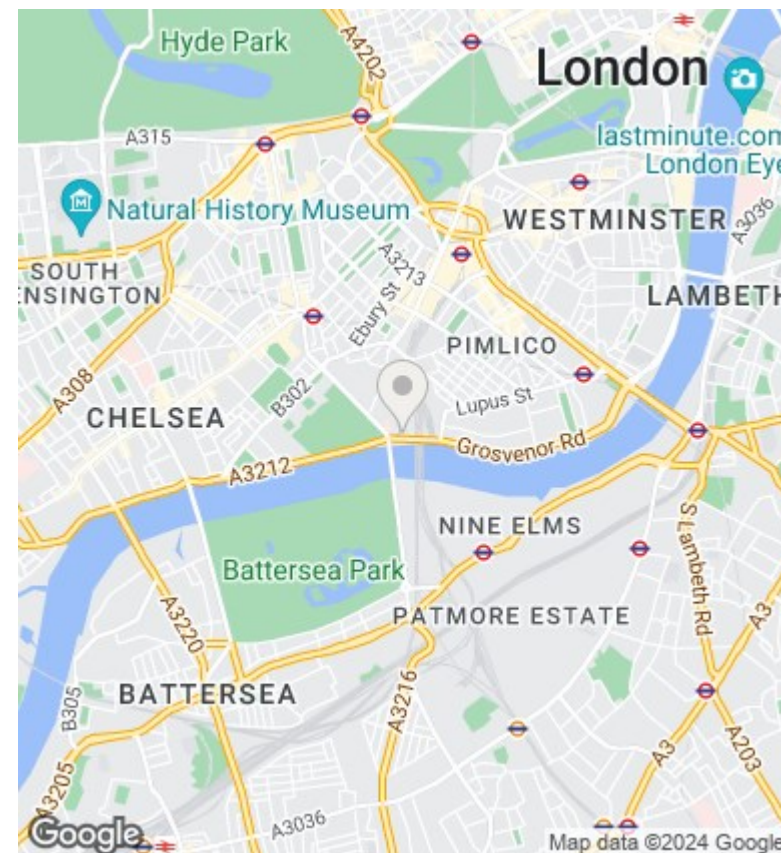
## Cubitt building, Gatliff Road, Grosvenor Waterside SW1W 8QL

£3,225 Per Month

- 1-Double Bedroom
- Dock and Chelsea Bridge Views
- 24/7 concierge
- Gym and Spa
- Under floor heating
- On-site amenities
- 10 minutes walk to Sloane Square and Victoria



Approximate Area = 60.9 sq m / 655 sq ft



### Viewings

Viewings by arrangement only.  
Call 02077225022 to make an appointment.

### Council Tax Band

E

### EPC Rating:

B

Energy Efficiency Rating		
	Current	Potential
Very energy efficient - lower running costs		
(92 plus) <b>A</b>		
(81-91) <b>B</b>	83	84
(69-80) <b>C</b>		
(55-68) <b>D</b>		
(39-54) <b>E</b>		
(21-38) <b>F</b>		
(1-20) <b>G</b>		
Not energy efficient - higher running costs		
<b>England &amp; Wales</b>	EU Directive 2002/91/EC	