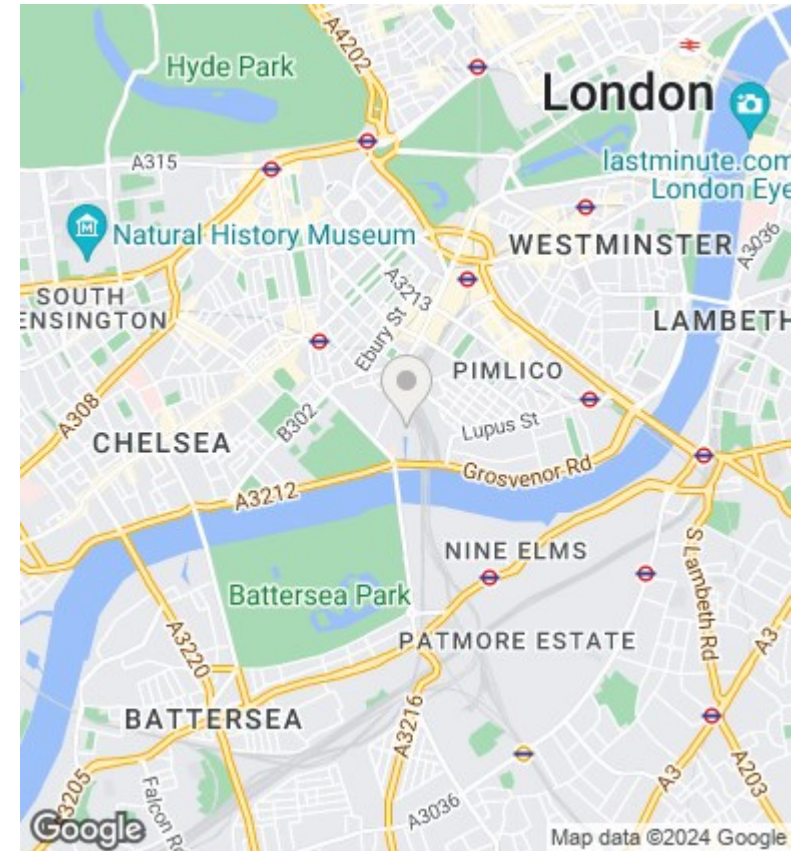
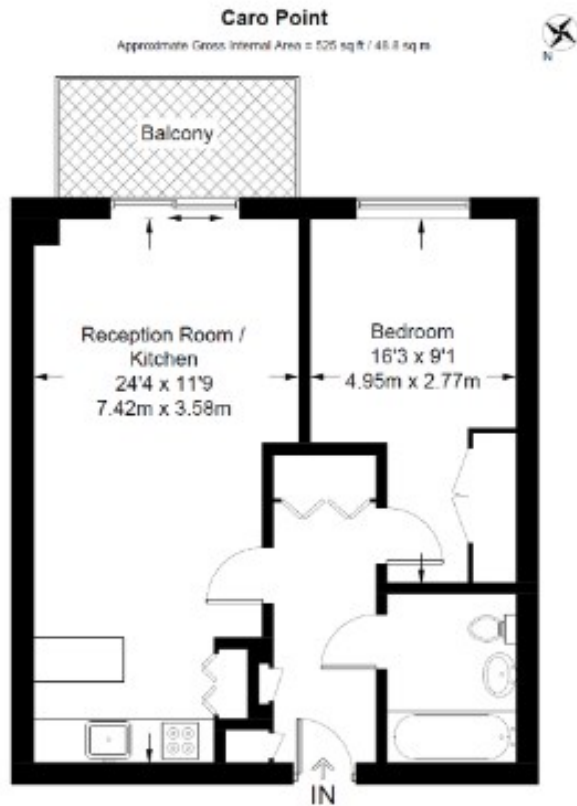




## Caro Point, Grosvenor Waterside, 5 Gatliff Road, London, SW1W SW1W 8BD

£3,228 Per Month

- 24 hour concierge
- South East facing
- on site restaurant and food shop
- video viewing available
- gym and spa
- underfloor heating
- moments away from Sloane Square and Victoria



### Viewings

Viewings by arrangement only.  
Call 02077225022 to make an appointment.

### Council Tax Band

### EPC Rating:

B

Energy Efficiency Rating		Current	Potential
<i>Very energy efficient - lower running costs</i>			
(92 plus)	A		
(81-91)	B	83	83
(69-80)	C		
(55-68)	D		
(39-54)	E		
(21-38)	F		
(1-20)	G		
<i>Not energy efficient - higher running costs</i>			
<b>England &amp; Wales</b>		EU Directive 2002/91/EC	