



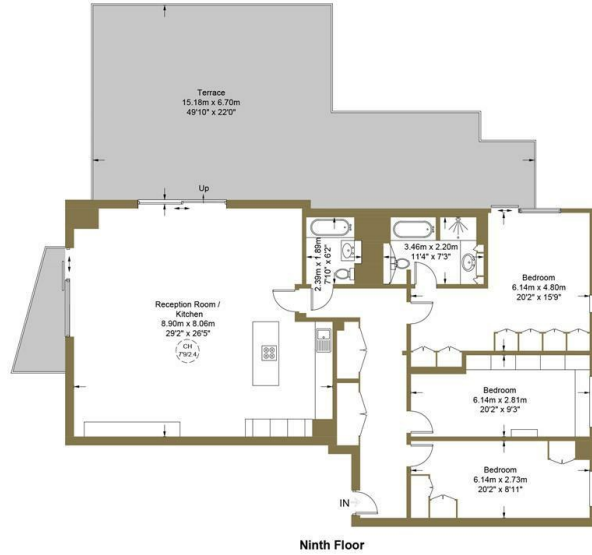
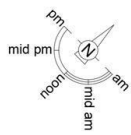
Caro Point, Grosvenor Waterside, Gatliff Road , Sloane Square , Chelsea SW1W

£2,750,000

- Over 1700 sq ft
- Onsite Gym / Spa
- Walking distance to Belgravia and Knightsridge
- underfloor heating and air cooling
- Large Private Terrace
- 24 Hour Concierge
- Victoria / Sloane Sq Station walking distance
- City views
- Walking distance to River Thames
- allocated parking space

Caro Point, SW1W

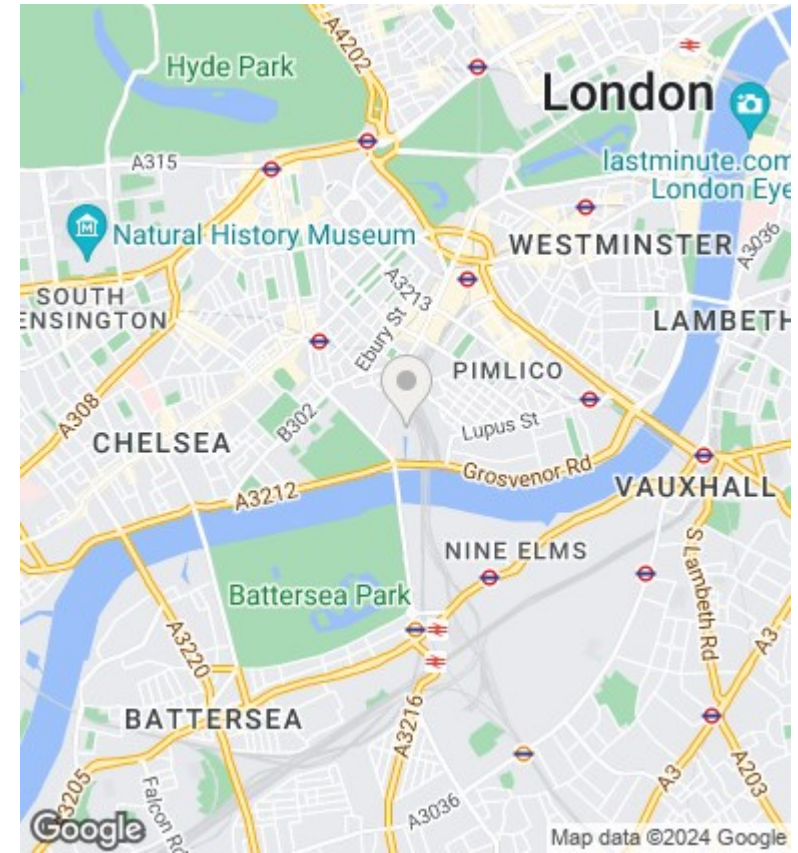
Approximate Gross Internal Area = 1725 sq ft / 160.3 sq m



Ninth Floor



This plan is for layout guidance only and is not drawn to scale unless stated. All dimensions, including windows, doors, and the Total Gross Internal Area (GIA), are approximate. For precise measurements, please consult a qualified architect or surveyor before making any decisions based on this plan.



Viewings

Viewings by arrangement only.
Call 02077225022 to make an appointment.

Council Tax Band

D

EPC Rating:

Energy Efficiency Rating

	Current	Potential
<i>Very energy efficient - lower running costs</i>		
(92 plus) A		
(81-91) B		
(69-80) C		
(55-68) D		
(39-54) E		
(21-38) F		
(1-20) G		
<i>Not energy efficient - higher running costs</i>		
England & Wales	EU Directive 2002/91/EC	