



## Hepworth Court, Grosvenor Waterside, Sloane Square London SW1W 8QN

£3,680 Per Month

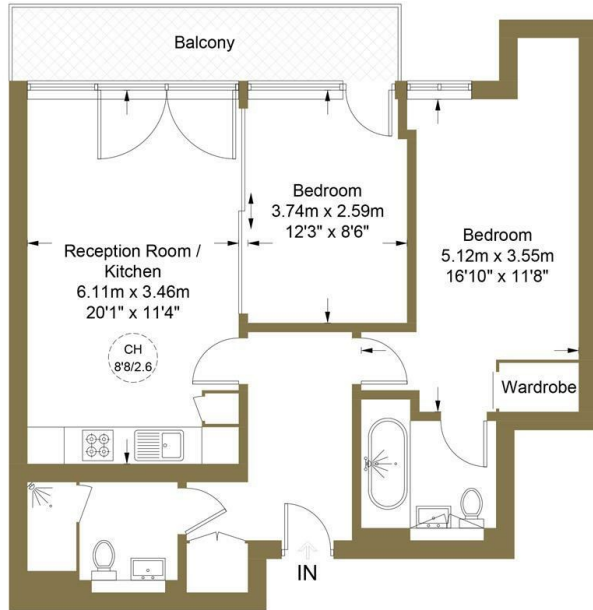
- 24/7 CONCIERGE
- ALLOCATED PARKING SPACE
- UNDERFLOOR HEATING AND AIR COOLING
- ONSITE FOOD SHOP AND RESTAURANT / COFFEE SHOP

- VIDEO VIEWING AVAILABLE
- 2 BEDROOMS 2 BATHROOMS
- GYM AND SPA

- PRIVATE BALCONY
- WEST FACING
- WALKING DISTANCE TO SLOANE SQUARE , VICTORIA AND BATTERSEA

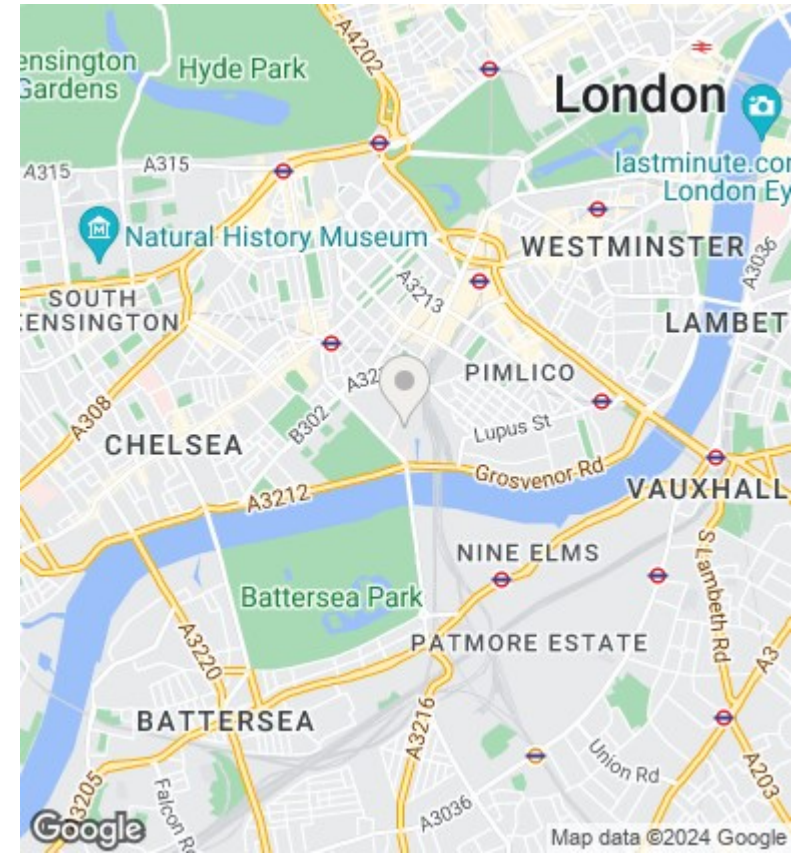
## Hepworth Court, SW1W

Approximate Gross Internal Area = 66.3 sq m / 714 sq ft



### Second Floor

This plan is for layout guidance only. Not drawn to scale unless stated. Windows and door openings are approximate. Whilst every care is taken in the preparation of this plan, please check all dimensions, shapes and compass bearings before making any decisions reliant upon them. (ID979319)



## Viewings

Viewings by arrangement only.  
Call 02077225022 to make an appointment.

## Council Tax Band

D

## EPC Rating:

C

Energy Efficiency Rating		
	Current	Potential
Very energy efficient - lower running costs		
(92 plus) <b>A</b>		
(81-91) <b>B</b>	80	80
(69-80) <b>C</b>		
(55-68) <b>D</b>		
(39-54) <b>E</b>		
(21-38) <b>F</b>		
(1-20) <b>G</b>		
Not energy efficient - higher running costs		
<b>England &amp; Wales</b>	EU Directive 2002/91/EC	