



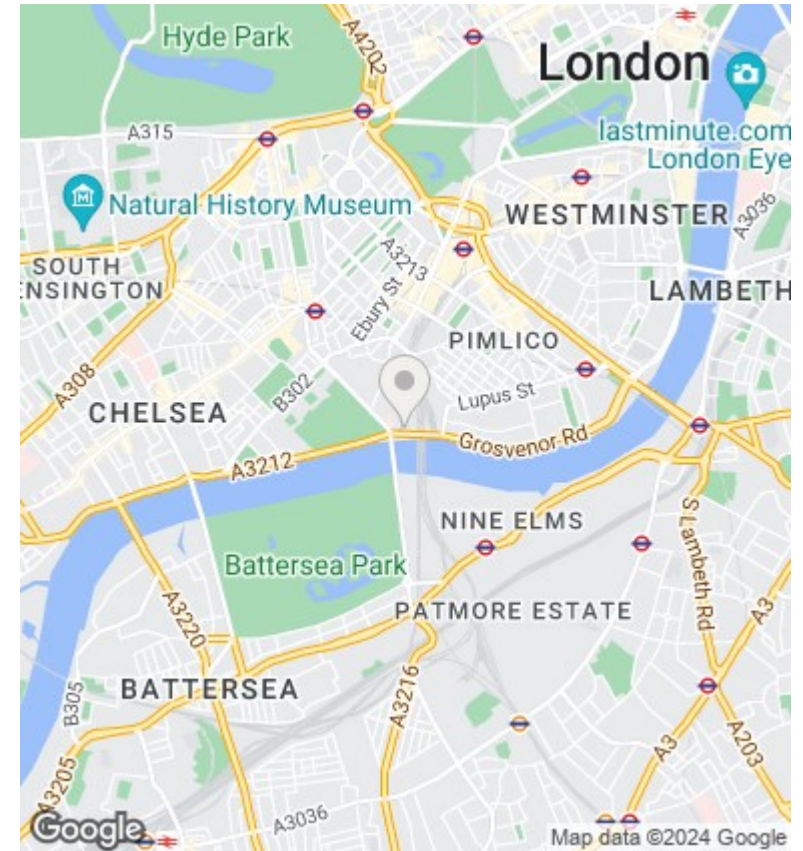
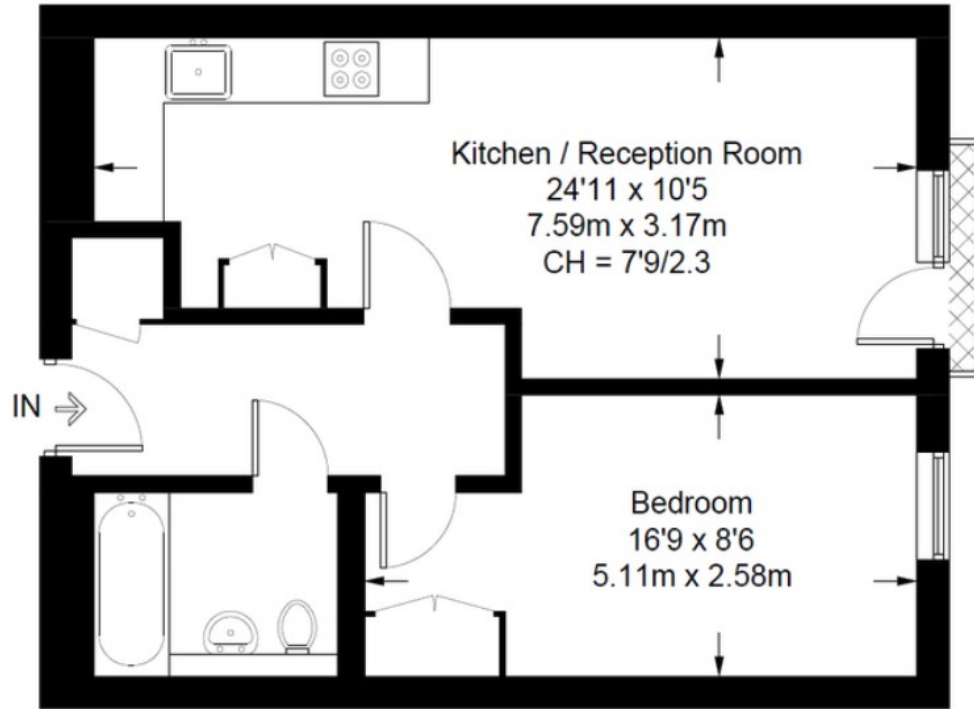
Wood House, Grosvenor Waterside, Chelsea SW1W 8DF

£2,350 Per Month

- Sought after Development
- 10 Minutes Walk to Battersea
- Modern
- Gym, Spa Included
- 24 Hr Concierge
- 10 Minutes Walk to Victoria and Sloane Square Stations
- Secure Access

Woods House

Approximate Gross Internal Area = 498 sq ft / 46.3 sq m



Viewings

Viewings by arrangement only.
Call 02077225022 to make an appointment.

Council Tax Band

D

EPC Rating:

B

Energy Efficiency Rating		
	Current	Potential
<i>Very energy efficient - lower running costs</i>		
(92 plus) A		
(81-91) B	82	82
(69-80) C		
(55-68) D		
(39-54) E		
(21-38) F		
(1-20) G		
<i>Not energy efficient - higher running costs</i>		
England & Wales	EU Directive 2002/91/EC	