

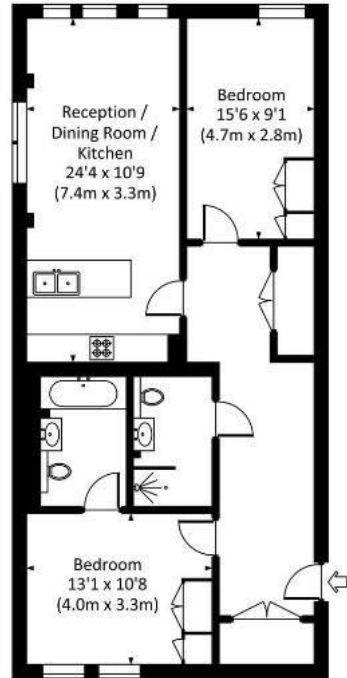


John Islip Street, Westminster, Central London SW1P 4FF

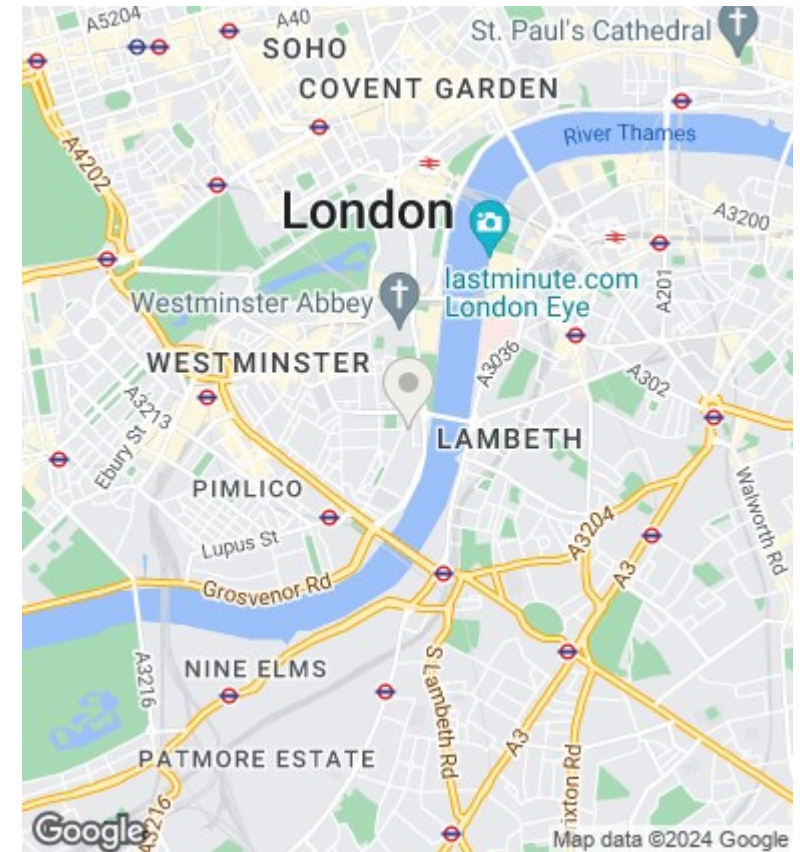
£5,480 Per Month

- 24h concierge
- swimming pool
- walking distance to Pimlico and St James Park stations
- video viewing available
- under floor heating and air cooling
- located in heart of Westminster
- gym/ spa
- meeting rooms

Approx. gross internal area
929 Sq Ft. / 86.3 Sq M.



FIRST FLOOR



Viewings

Viewings by arrangement only.
Call 02077225022 to make an appointment.

Council Tax Band

G

EPC Rating:

B

Energy Efficiency Rating		Current	Potential
<i>Very energy efficient - lower running costs</i>			
(92 plus) A			
(81-91) B		85	85
(69-80) C			
(55-68) D			
(39-54) E			
(21-38) F			
(1-20) G			
<i>Not energy efficient - higher running costs</i>			
England & Wales		EU Directive 2002/91/EC	