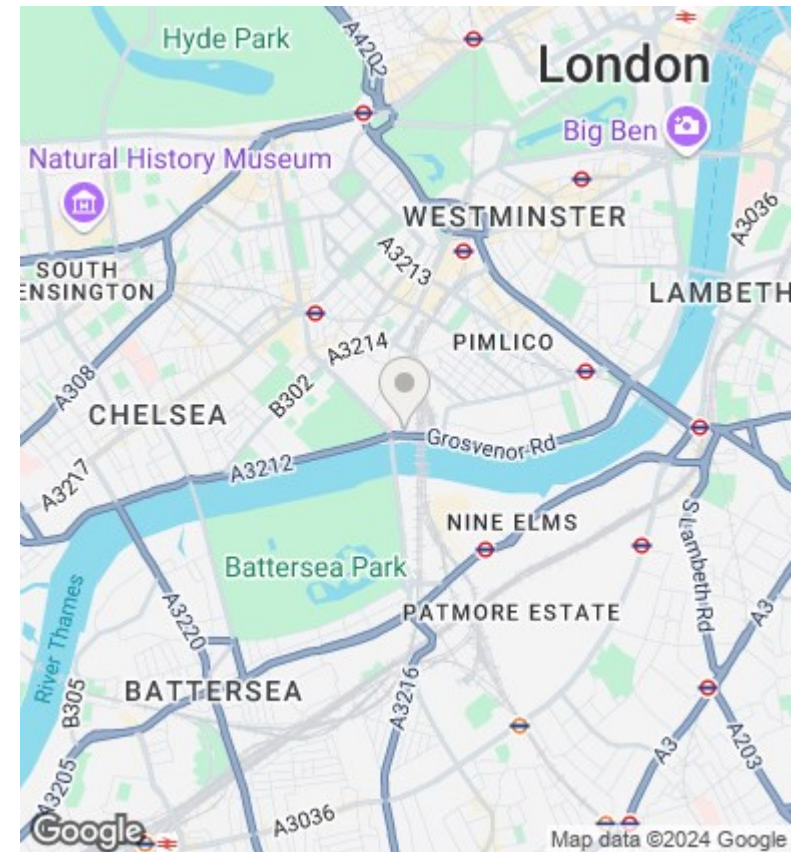
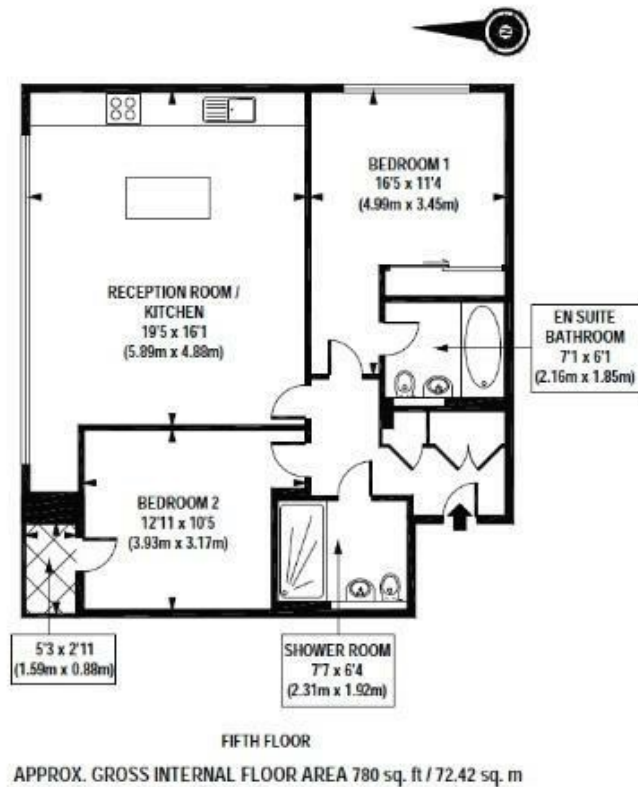




Cubitt Building, Grosvenor Waterside, Gatliff Road, Sloane Square SW1W 8QL

£1,100,000

- 24/7 CONCIERGE
- UNDERFLOOR HEATING AND AIR COOLING
- RESIDENCE GYM AND SPA
- WALKING DISTANCE TO VICTORIA AND SLOANE SQUARE STATIONS
- SOLE AGENT
- ALLOCATED PARKING SPACE
- ONSITE FOOD SHOP AND RESTAURANT / COFFE SHOP
- DOCK VIEWS
- WOODEN FLOOR
- MOMENTS AWAY FROM BATTERSEA PARK



Viewings

Viewings by arrangement only.
Call 02077225022 to make an appointment.

Council Tax Band

F

EPC Rating:

C

Energy Efficiency Rating		
	Current	Potential
<i>Very energy efficient - lower running costs</i>		
(92 plus) A		
(81-91) B	77	77
(69-80) C		
(55-68) D		
(39-54) E		
(21-38) F		
(1-20) G		
<i>Not energy efficient - higher running costs</i>		
England & Wales	EU Directive 2002/91/EC	