

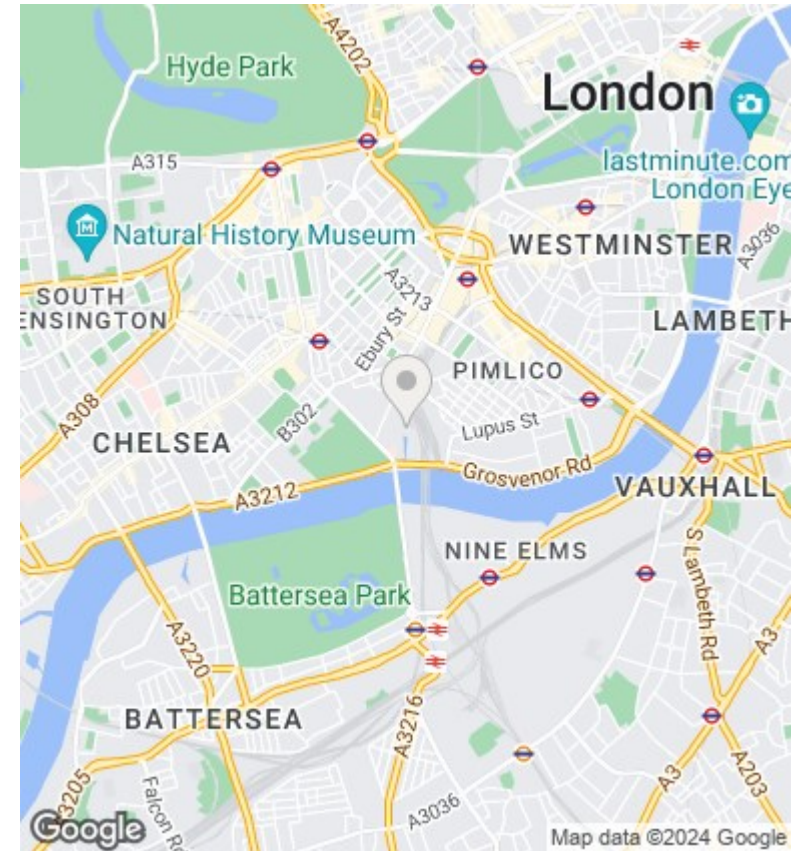
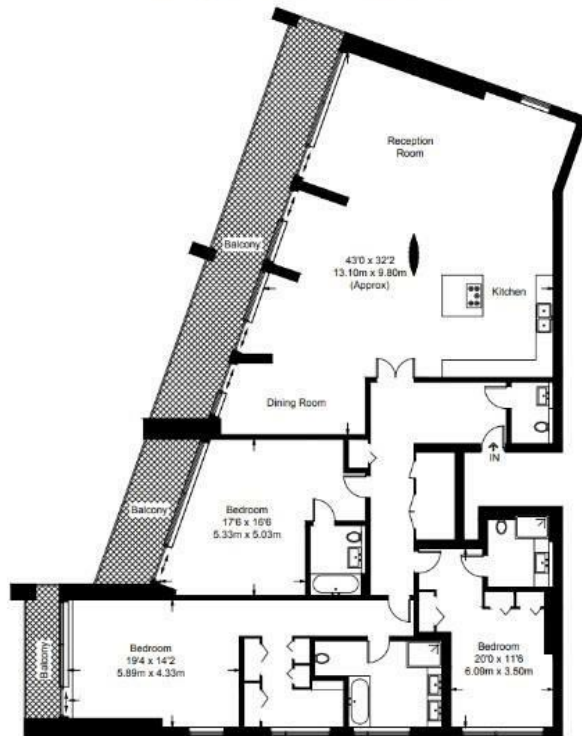


Caro Point , Gatliff Road , Grosvenor Waterside SW1W 8BD

£4,500,000

- 24/7 CONCIERGE
- SOUTH FACING TERRACES
- MOMENTS AWAY FROM SLOANE SQUARE , VICTORIA AND BATTERSEA POWER STATION TRANSPORT LINKS
- SOLE AGENTS
- VIDEO VIEWING AVAILABLE
- UNIQUE 2500 SQ FEET APARTMENT
- WALKING DISTANCE TO BATTERSEA PARK
- 3 BEDROOMS 3 BATHROOMS
- 2 ALLOCATED PARKING SPACES
- RESIDENCE GYM AND SPA

Approximate Gross Internal Area – 2590 sq ft / 240.6 sq m



Viewings

Viewings by arrangement only.
Call 02077225022 to make an appointment.

Council Tax Band

H

EPC Rating:

B

Energy Efficiency Rating		Current	Potential
<i>Very energy efficient - lower running costs</i>			
(92 plus) A			
(81-91) B		85	86
(69-80) C			
(55-68) D			
(39-54) E			
(21-38) F			
(1-20) G			
<i>Not energy efficient - higher running costs</i>			
England & Wales		EU Directive 2002/91/EC	