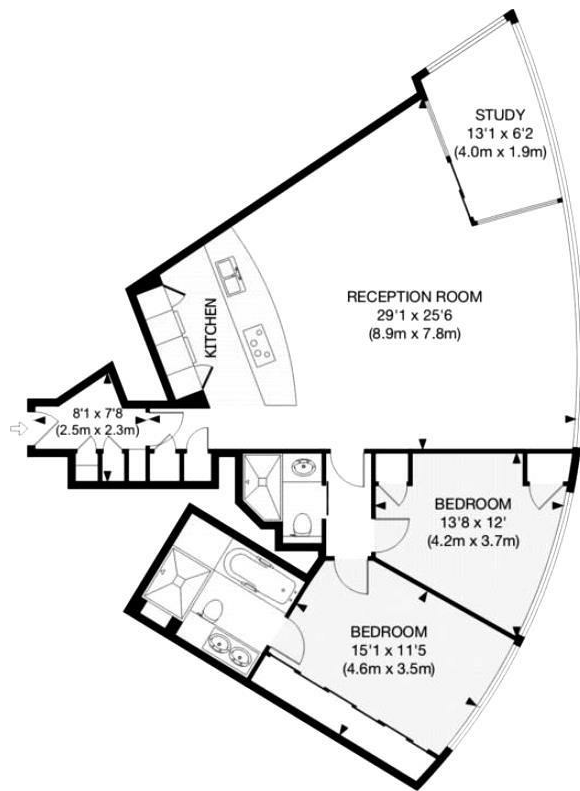




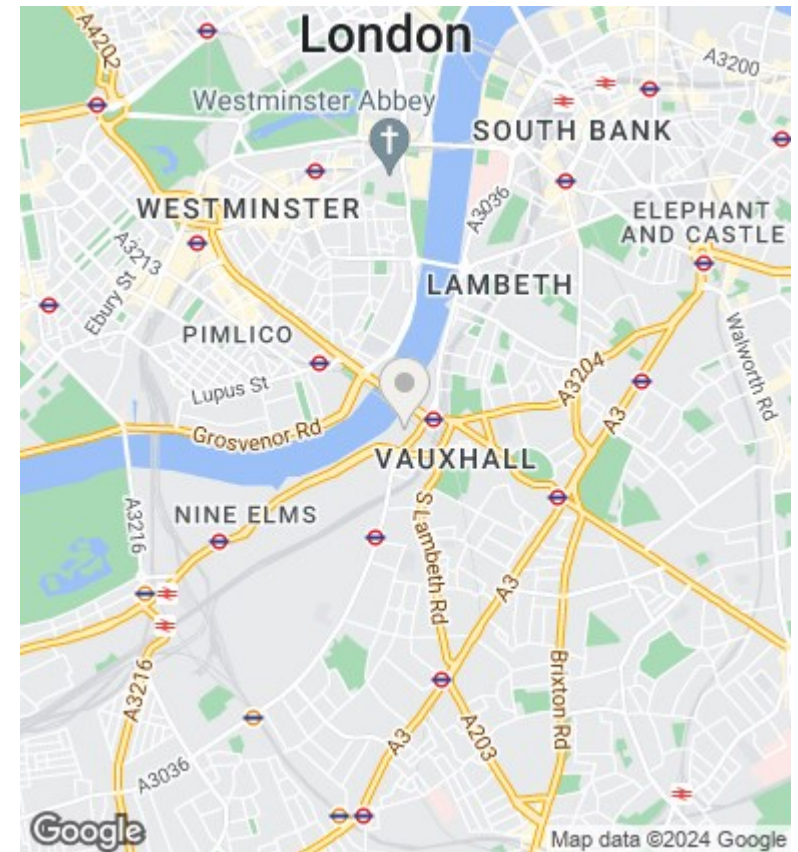
The Tower, St. George Wharf, Vauxhall, London SW8 2BW

£1,500,000

- 24H CONCIERGE
- GYM / SPA WITH SWIMMING POOL
- CINEMA
- PARKING SPACE
- VIDEO VIEWING AVAILABLE
- UNDER FLOOR HEATING AND AIR COOLING
- RESIDENCE LOUGE
- GATED DEVELOPMENT
- SMART HOME SYSTEM
- MEETING ROOM / DINING ROOM



APPROX. GROSS INTERNAL FLOOR AREA 1075 SQ FT / 100 SQ M



Viewings

Viewings by arrangement only.
Call 02077225022 to make an appointment.

Council Tax Band

D

EPC Rating:

B

| Energy Efficiency Rating | | Current | Potential |
|--|---|----------------------------|-----------|
| <i>Very energy efficient - lower running costs</i> | | | |
| (92 plus) | A | | |
| (81-91) | B | 83 | 85 |
| (69-80) | C | | |
| (55-68) | D | | |
| (39-54) | E | | |
| (21-38) | F | | |
| (1-20) | G | | |
| <i>Not energy efficient - higher running costs</i> | | | |
| England & Wales | | EU Directive 2002/91/EC | |