

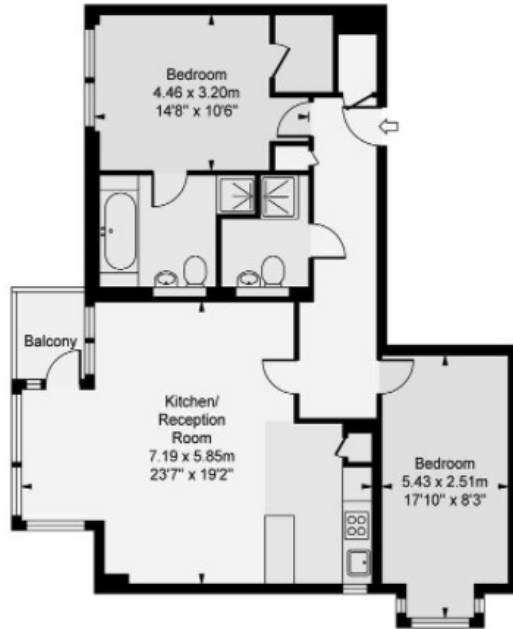


## Hepworth Court , Gatliff Road, Grosvenor Waterside SW1W 8QN

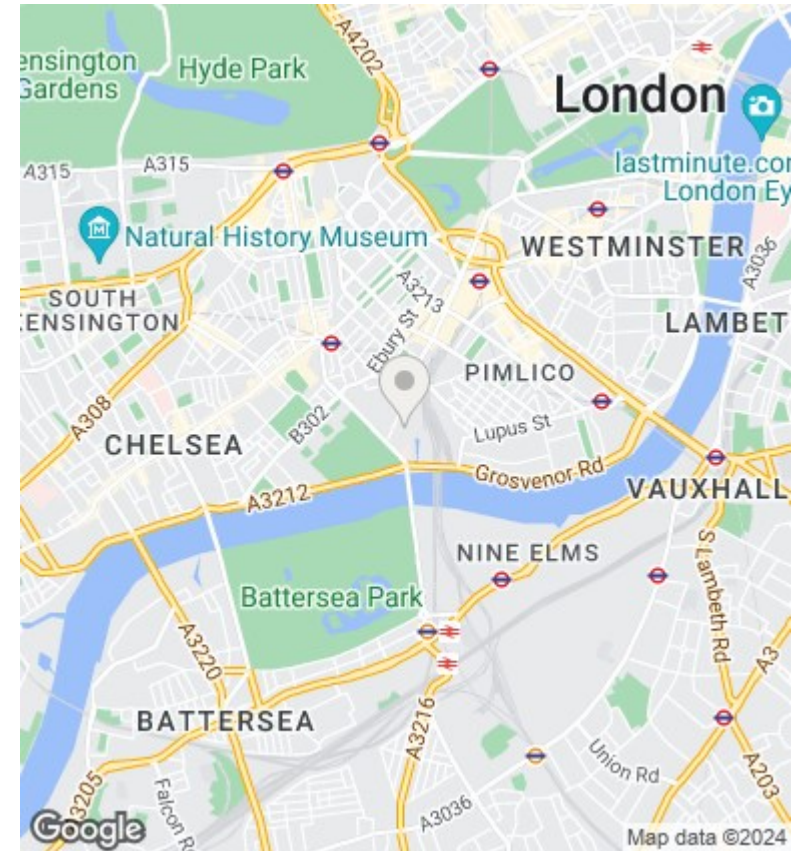
£1,380,000

- 24 HOUR CONCIERGE
- GYM AND SPA
- WALKING DISTANCE TO SLOANE SQUARE AND VICTORIA TUBE STATIONS
- VIDEO VIEWING AVAILABLE
- WOODEN FLOORS
- ON SITE FOOD SHOP AND RESTAURANT / COFFE SHOP
- UNDER FLOOR HEATING AND AIR COOLING
- MOMENTS AWAY FROM BATTERSEA PARK
- LAUDRY SERIVCE

Hepworth Court,  
Grosvenor Waterside,  
Gatliff Road, Chelsea, SW1W  
Approximate Gross Internal Area  
911 sq ft / 84.63 sq m



Second Floor



## Viewings

Viewings by arrangement only.  
Call 02077225022 to make an appointment.

## Council Tax Band

C

## EPC Rating:

C

Energy Efficiency Rating		
	Current	Potential
<i>Very energy efficient - lower running costs</i>		
(92 plus) <b>A</b>		
(81-91) <b>B</b>		
(69-80) <b>C</b>	70	70
(55-68) <b>D</b>		
(39-54) <b>E</b>		
(21-38) <b>F</b>		
(1-20) <b>G</b>		
<i>Not energy efficient - higher running costs</i>		
<b>England &amp; Wales</b>	EU Directive 2002/91/EC	