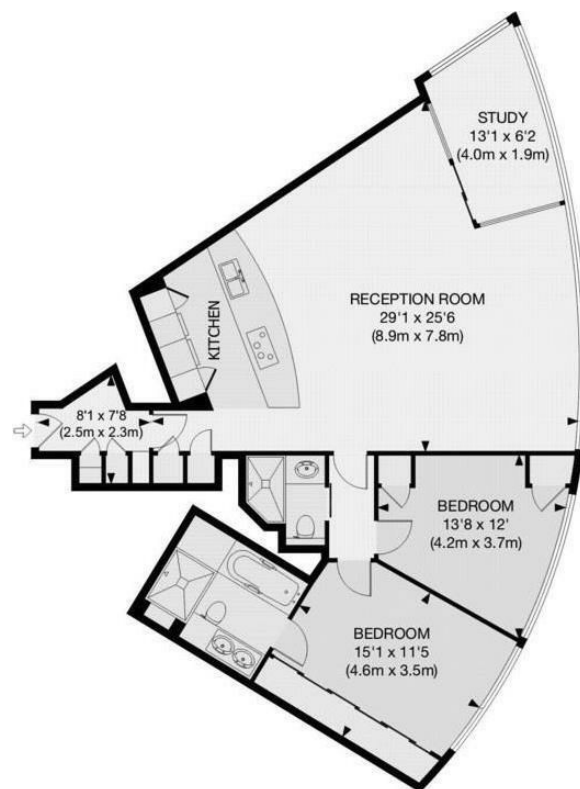


## The Tower, St. George Wharf, Vauxhall, London SW8 2BW

£1,475,000

- 24h CONCIERGE
- CINEMA
- VALET PARKING
- FULL RIVER VIEWS
- VIDEO VIEWING AVAILABLE
- RESIDENCE LOUNGE
- SMART HOME SYSTEM
- GYM AND SPA WITH SWIMMING POOL OVERLOOKING RIVER
- GATED DEVELOPMENT
- UNDER FLOOR HEATING AND AIR COOLING



APPROX. GROSS INTERNAL FLOOR AREA 1075 SQ FT / 100 SQ M

## Viewings

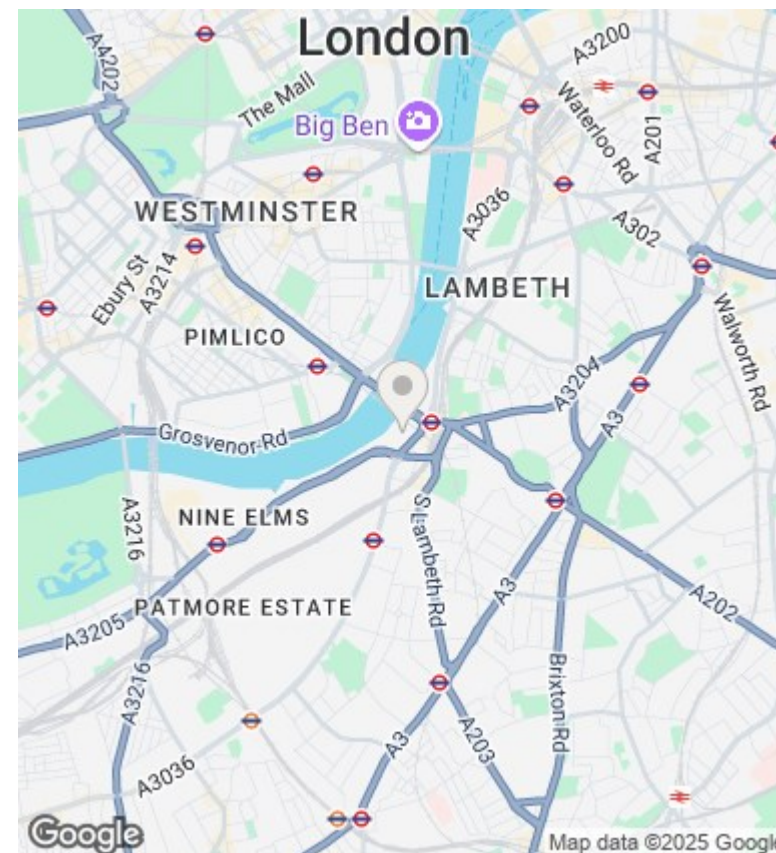
Viewings by arrangement only.  
Call 02077225022 to make an appointment.

## Council Tax Band

D

## EPC Rating:

B



## Energy Efficiency Rating

	Current	Potential
Very energy efficient - lower running costs		
(92 plus) <b>A</b>		
(81-91) <b>B</b>	84	85
(69-80) <b>C</b>		
(55-68) <b>D</b>		
(39-54) <b>E</b>		
(21-38) <b>F</b>		
(1-20) <b>G</b>		
Not energy efficient - higher running costs		
<b>England &amp; Wales</b>	EU Directive 2002/91/EC	