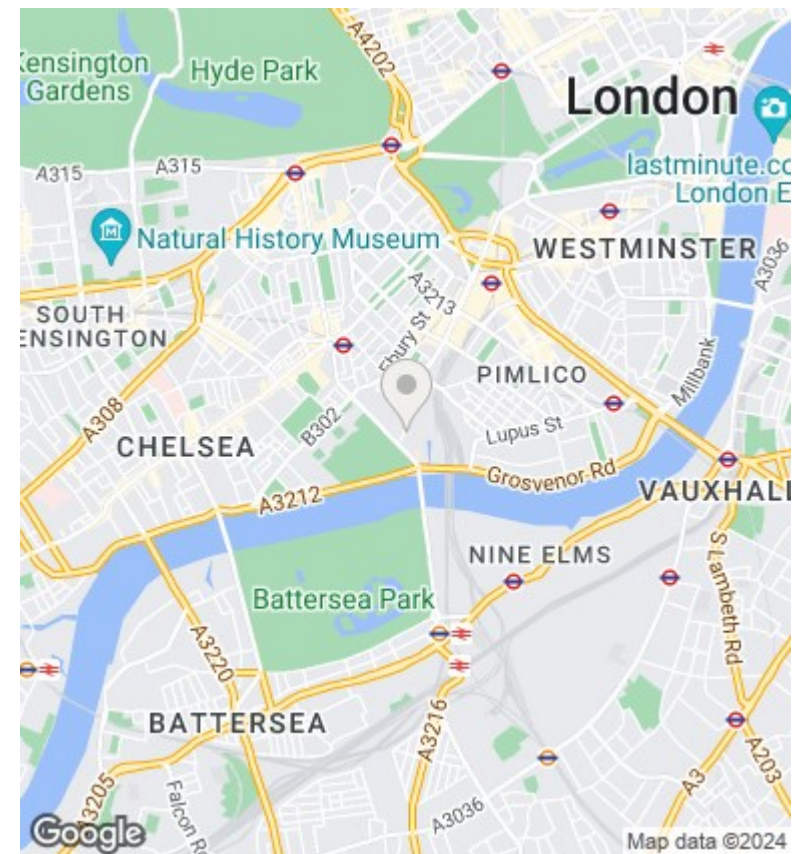
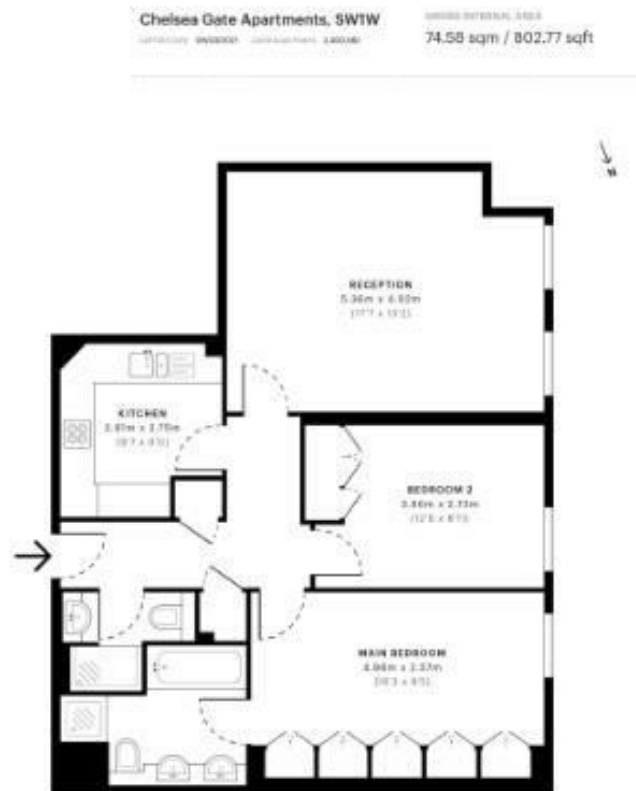




Chelsea Gate Apartments, Ebury Bridge Road, Sloane Square, London SW1W 8RB  
£895,000

- 24 H CONCIERGE
- 1 ALLOCATED PARKING SPACE
- WALKING DISTANCE TO SLOANE SQUARE AND VICTORIA STATIONS
- VIDEO VIEWING AVAILABLE
- WOODEN FLOORING THROUGHOUT
- MOMENTS AWAY FROM BATTERSEA POWER STATION AND BATTERSEA PARK
- RESIDENCE COURT YARD
- FACING WEST



### Viewings

Viewings by arrangement only.  
 Call 02077225022 to make an appointment.

### Council Tax Band

G

### EPC Rating:

C

| Energy Efficiency Rating                           |  | Current                    | Potential |
|--|--|----------------------------|-----------|
| <i>Very energy efficient - lower running costs</i> |  |                            |           |
| (92 plus) <b>A</b>                                 |  |                            |           |
| (81-91) <b>B</b>                                   |  |                            |           |
| (69-80) <b>C</b>                                   |  | 69                         | 74        |
| (55-68) <b>D</b>                                   |  |                            |           |
| (39-54) <b>E</b>                                   |  |                            |           |
| (21-38) <b>F</b>                                   |  |                            |           |
| (1-20) <b>G</b>                                    |  |                            |           |
| <i>Not energy efficient - higher running costs</i> |  |                            |           |
| <b>England &amp; Wales</b>                         |  | EU Directive<br>2002/91/EC |           |