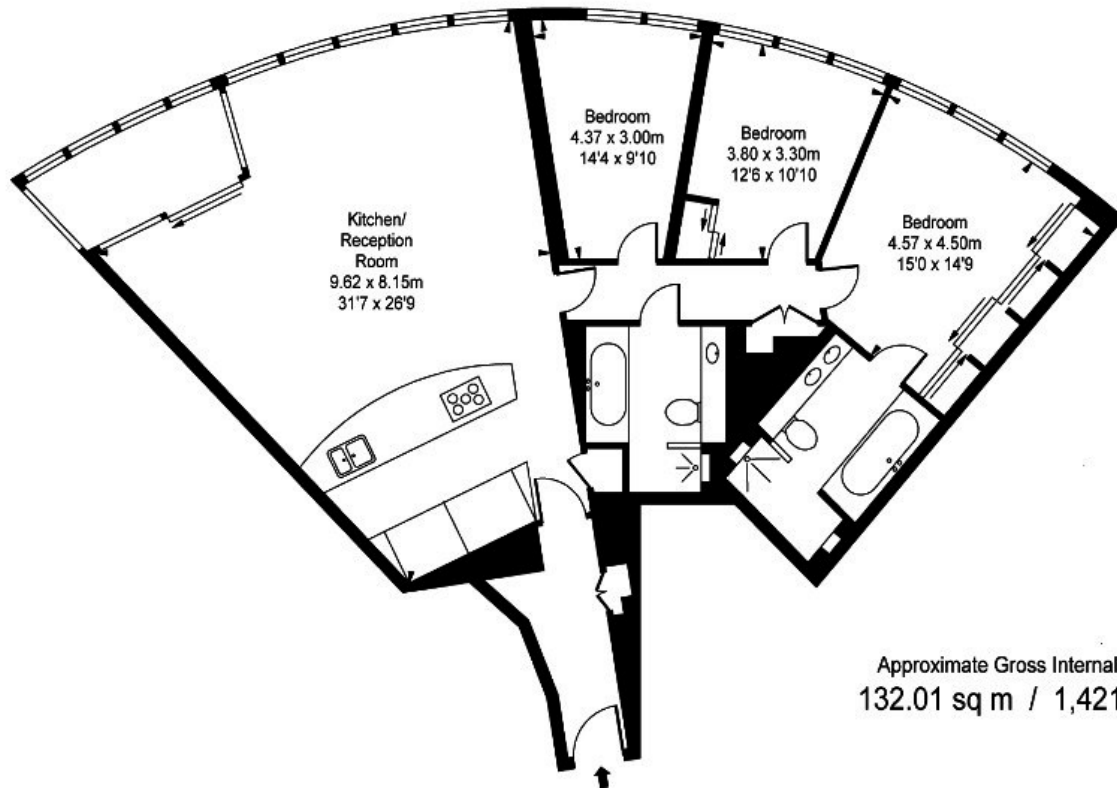




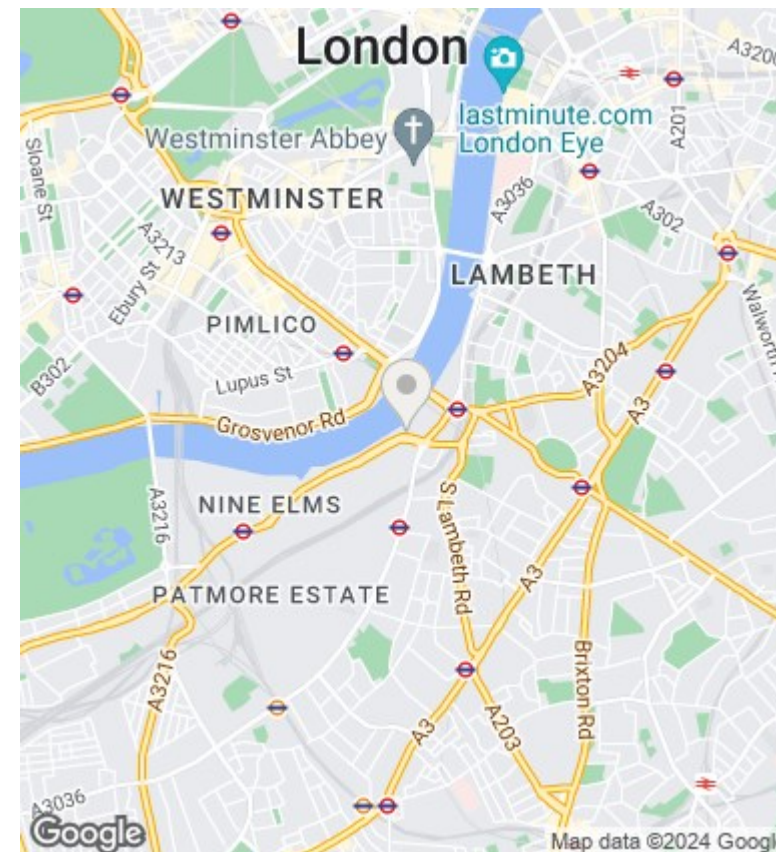
## The Tower, 1 St George Wharf, Vauxhall SW8 2DU

£6,066 Per Month

- video viewing available
- gym and spa
- swimming pool with River views
- meeting room / dining room
- cinema
- valet parking
- under floor heating and air cooling
- 24 hour concierge
- smart home system
- direct River views



Approximate Gross Internal Area  
132.01 sq m / 1,421 sq ft



## Viewings

Viewings by arrangement only.  
Call 02077225022 to make an appointment.

## Council Tax Band

## EPC Rating:

Energy Efficiency Rating		
	Current	Potential
<i>Very energy efficient - lower running costs</i>		
(92 plus) <b>A</b>		
(81-91) <b>B</b>		
(69-80) <b>C</b>		
(55-68) <b>D</b>		
(39-54) <b>E</b>		
(21-38) <b>F</b>		
(1-20) <b>G</b>		
<i>Not energy efficient - higher running costs</i>		
<b>England &amp; Wales</b>	EU Directive 2002/91/EC	