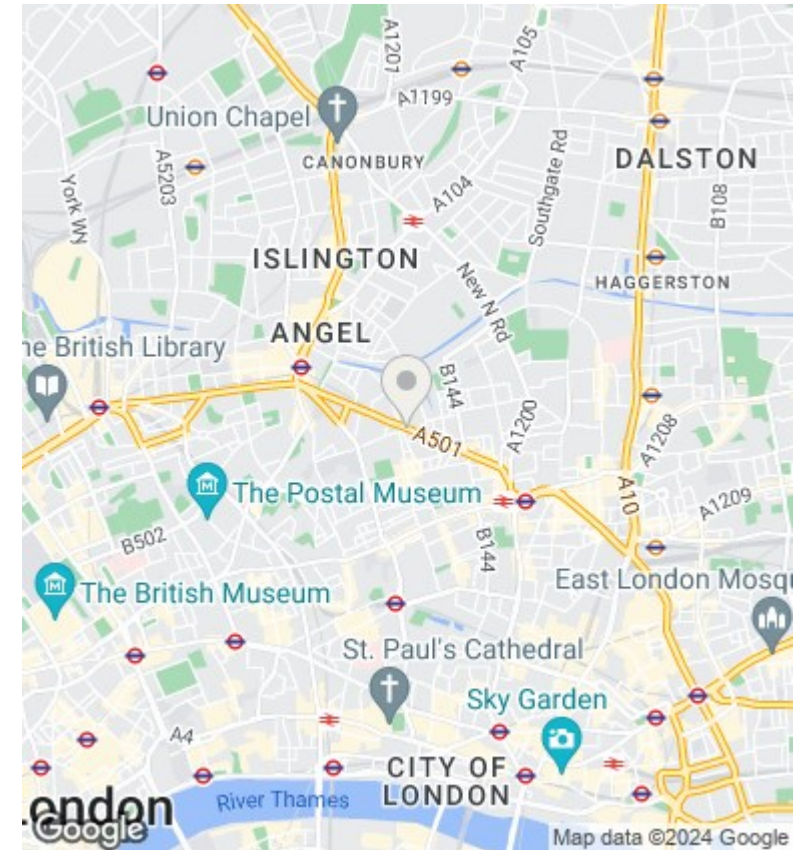
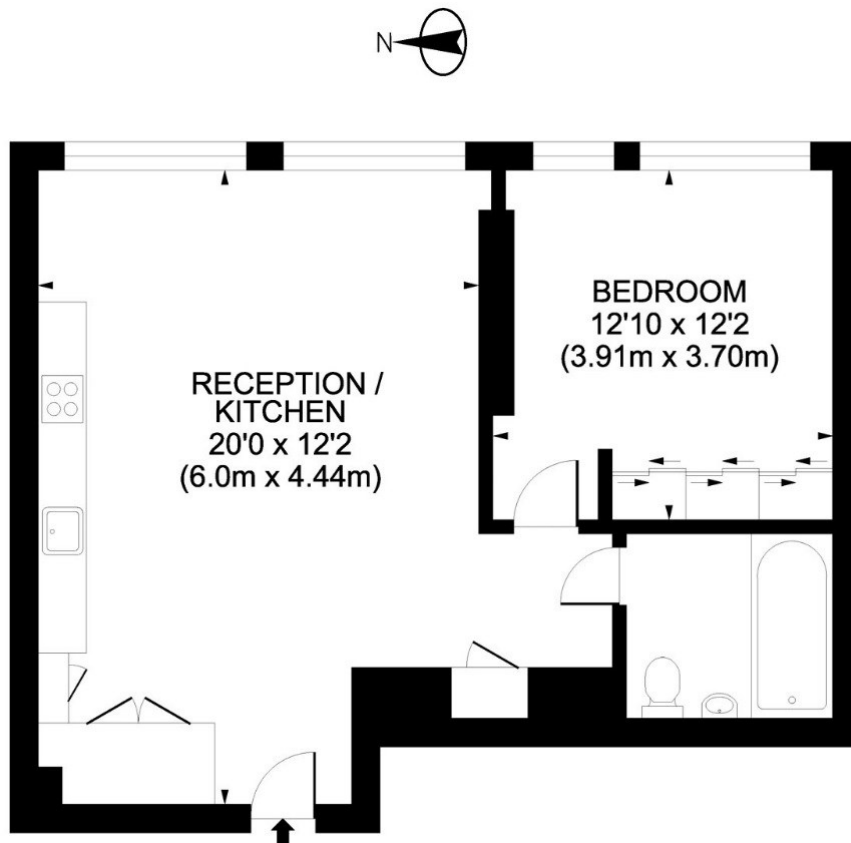


Chronicle Tower, The Lexicon, 261b City Road, EC1V EC1V 1AJ

Asking Price £650,000

- 24 Hour Concierge
- Central Convenience
- Stylish Premium Finishes
- Vibrant Lifestyle Experience
- Modern Urban Elegance
- Spacious Contemporary Design
- Tranquil Urban Retreat
- Intelligent Living Solutions
- Expansive Panoramic Windows
- Residents Health Club



Viewings

Viewings by arrangement only.
Call 02077225022 to make an appointment.

Council Tax Band

E

EPC Rating:

B

Energy Efficiency Rating		Current	Potential
<i>Very energy efficient - lower running costs</i>			
(92 plus) A			
(81-91) B		82	82
(69-80) C			
(55-68) D			
(39-54) E			
(21-38) F			
(1-20) G			
<i>Not energy efficient - higher running costs</i>			
England & Wales		EU Directive 2002/91/EC	