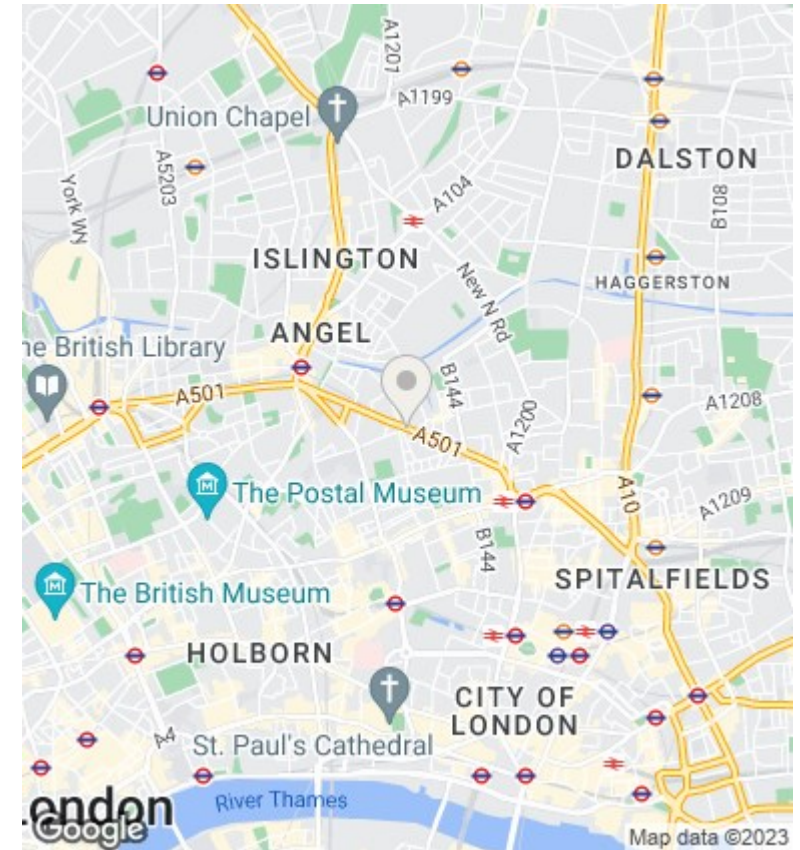
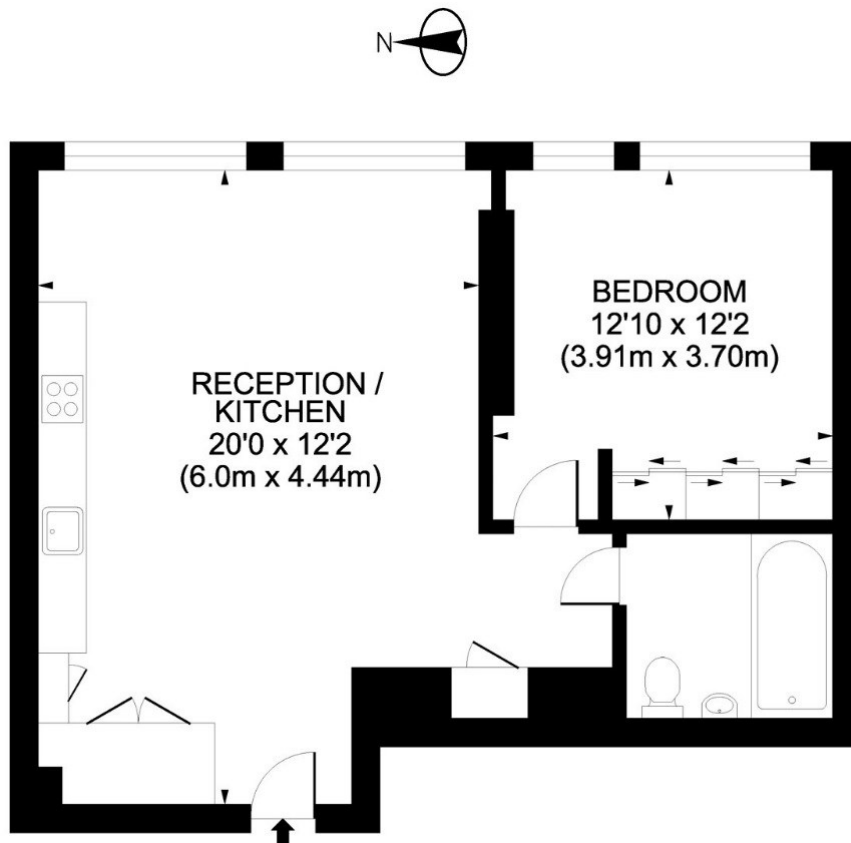


Chronicle Tower, The Lexicon, 261b City Road, EC1V EC1V 1AJ

Asking Price £650,000

- 24 Hour Concierge
- Central Convenience
- Stylish Premium Finishes
- Vibrant Lifestyle Experience
- Modern Urban Elegance
- Spacious Contemporary Design
- Tranquil Urban Retreat
- Intelligent Living Solutions
- Expansive Panoramic Windows
- Residents Health Club



Viewings

Viewings by arrangement only.
Call 02077225022 to make an appointment.

Council Tax Band

E

EPC Rating:

B

Energy Efficiency Rating		Current	Potential
<i>Very energy efficient - lower running costs</i>			
(92 plus)	A		
(81-91)	B	82	82
(69-80)	C		
(55-68)	D		
(39-54)	E		
(21-38)	F		
(1-20)	G		
<i>Not energy efficient - higher running costs</i>			
England & Wales		EU Directive 2002/91/EC	