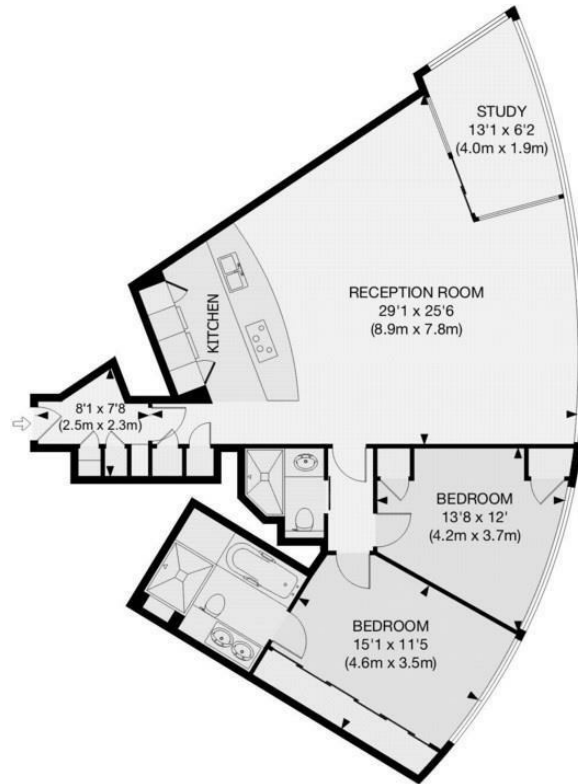


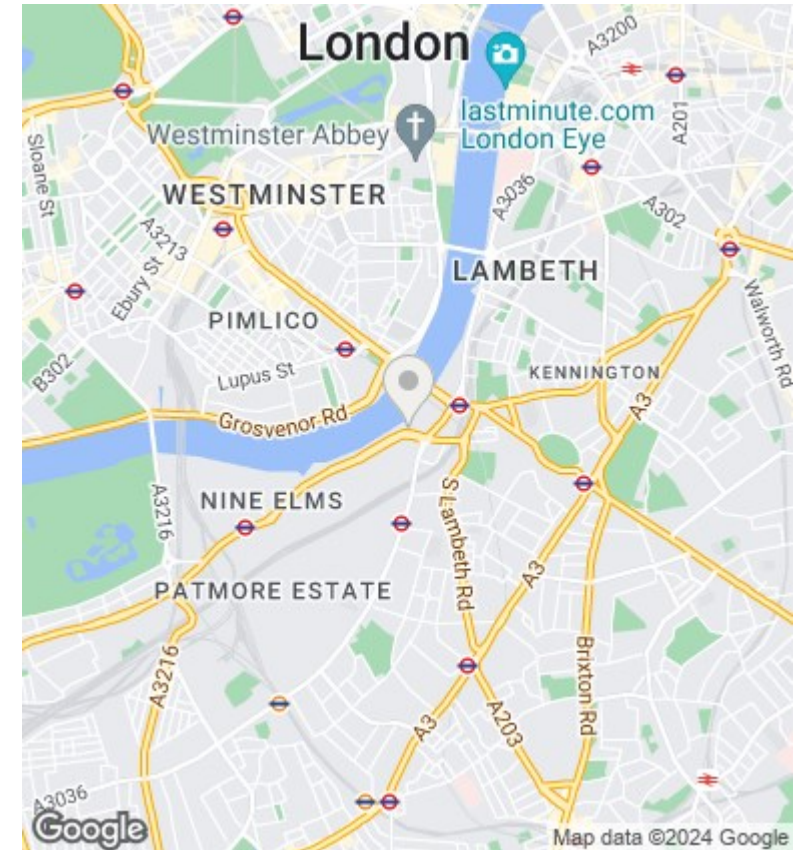
The Tower, St. George Wharf, Vauxhall, London SW8 2DU

£1,200,000

- video viewing available
- cinema
- under floor heating
- gym and spa
- 24 hour concierge
- business lounge
- air cooling
- swimming pool overlooking river
- dining room
- allocated parking space



APPROX. GROSS INTERNAL FLOOR AREA 1075 SQ FT / 100 SQ M



Viewings

Viewings by arrangement only.
Call 02077225022 to make an appointment.

Council Tax Band

F

EPC Rating:

B

Energy Efficiency Rating		Current	Potential
<i>Very energy efficient - lower running costs</i>			
(92 plus)	A		
(81-91)	B	84	85
(69-80)	C		
(55-68)	D		
(39-54)	E		
(21-38)	F		
(1-20)	G		
<i>Not energy efficient - higher running costs</i>			
England & Wales		EU Directive 2002/91/EC	