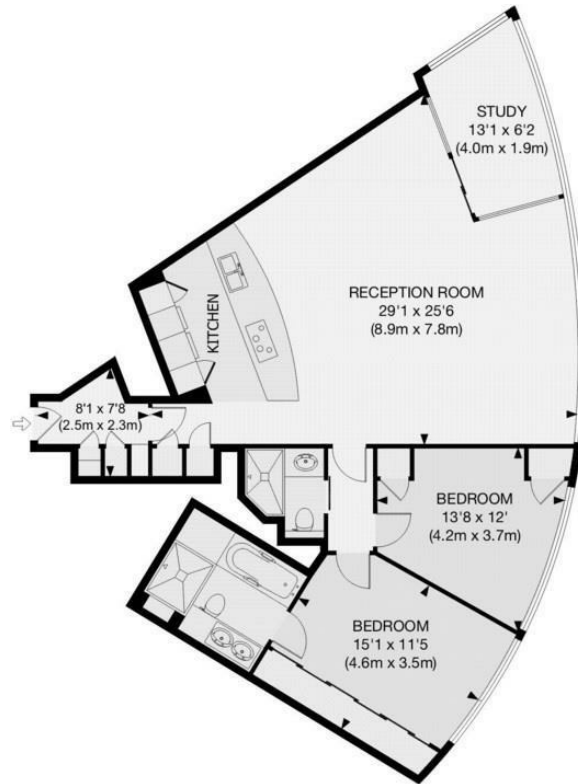




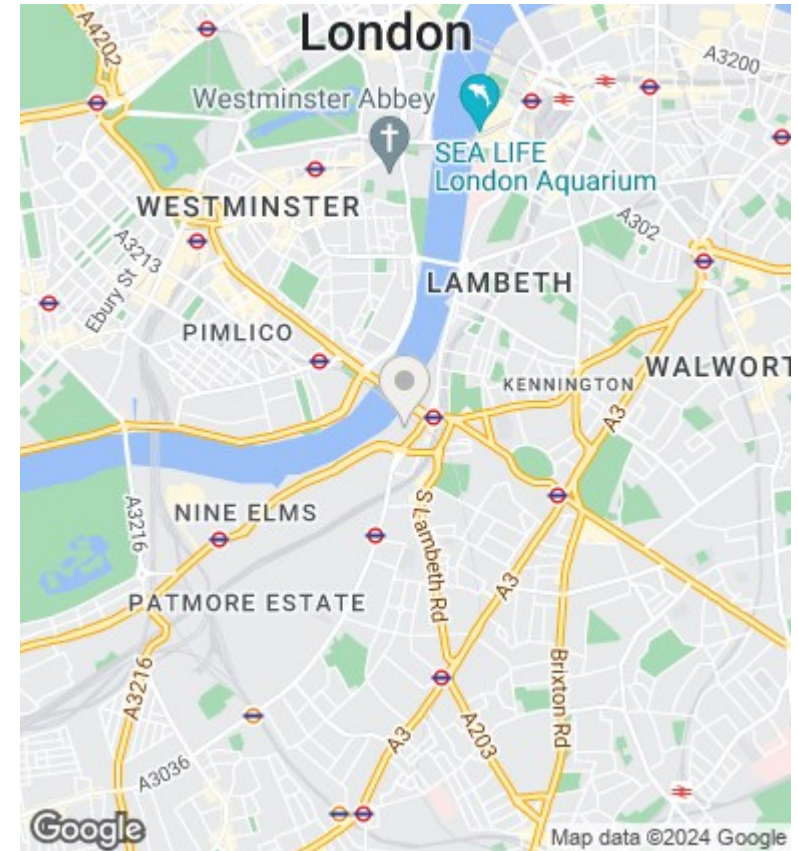
The Tower, 1 St George Wharf, London, SW8 SW8 2DA

£1,500,000

- 1075 square foot
- 24 hour concierge
- Gym and spa
- Furniture included
- Two bedrooms
- Residents lounge
- Underground parking included
- Two bathrooms
- Swimming pool overlooking River Thames
- Air cooling and underfloor heating



APPROX. GROSS INTERNAL FLOOR AREA 1075 SQ FT / 100 SQ M



Viewings

Viewings by arrangement only.
Call 02077225022 to make an appointment.

Council Tax Band

New Build

EPC Rating:

Energy Efficiency Rating		Current	Potential
<i>Very energy efficient - lower running costs</i>			
(92 plus)	A		
(81-91)	B		
(69-80)	C		
(55-68)	D		
(39-54)	E		
(21-38)	F		
(1-20)	G		
<i>Not energy efficient - higher running costs</i>			
England & Wales		EU Directive 2002/91/EC	