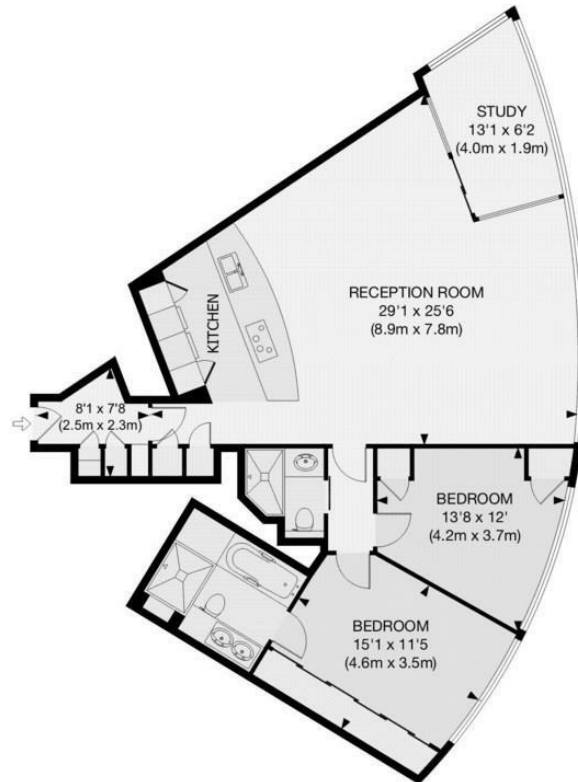




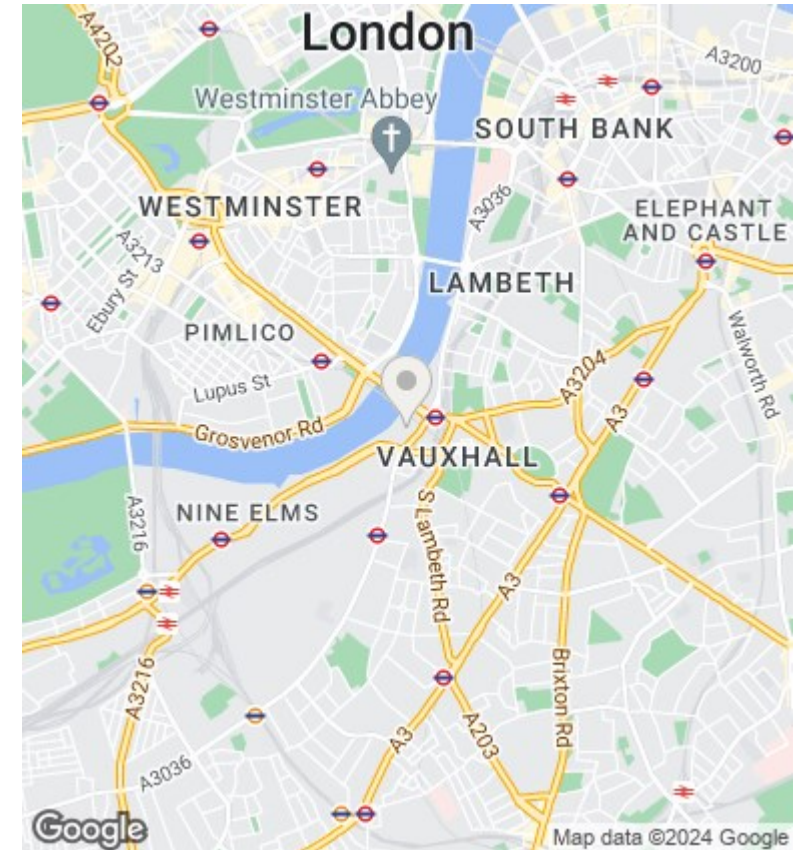
## The Tower, 1 St George Wharf, London, SW8 SW8 2DA

£1,500,000

- 1075 square foot
- 24 hour concierge
- Gym and spa
- Furniture included
- Two bedrooms
- Residents lounge
- Underground parking included
- Two bathrooms
- Swimming pool overlooking River Thames
- Air cooling and underfloor heating



APPROX. GROSS INTERNAL FLOOR AREA 1075 SQ FT / 100 SQ M



## Viewings

Viewings by arrangement only.  
Call 02077225022 to make an appointment.

## Council Tax Band

New Build

EPC Rating:

Energy Efficiency Rating		
	Current	Potential
<i>Very energy efficient - lower running costs</i>		
(92 plus) <b>A</b>		
(81-91) <b>B</b>		
(69-80) <b>C</b>		
(55-68) <b>D</b>		
(39-54) <b>E</b>		
(21-38) <b>F</b>		
(1-20) <b>G</b>		
<i>Not energy efficient - higher running costs</i>		
<b>England &amp; Wales</b>	EU Directive 2002/91/EC	