



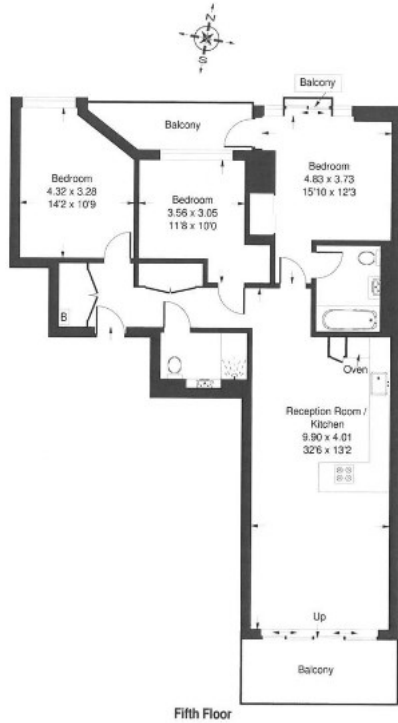
## 27 Cascade Court, Vista, 1 Sopwith Way, London, SW11 8NS

£1,750,000

- 24 HOUR CONCIERGE
- GYM AND SPA
- VIDEO VIEWING AVAILABLE
- SWIMMING POOL
- UNDER FLOOR HEATING AND AIR COOLING
- MOMENTS AWAY FROM BATTERSEA PARK

### Cascade Apartments, SW8

Approx. Gross Internal Area  
99.2 sq m / 1068 sq ft



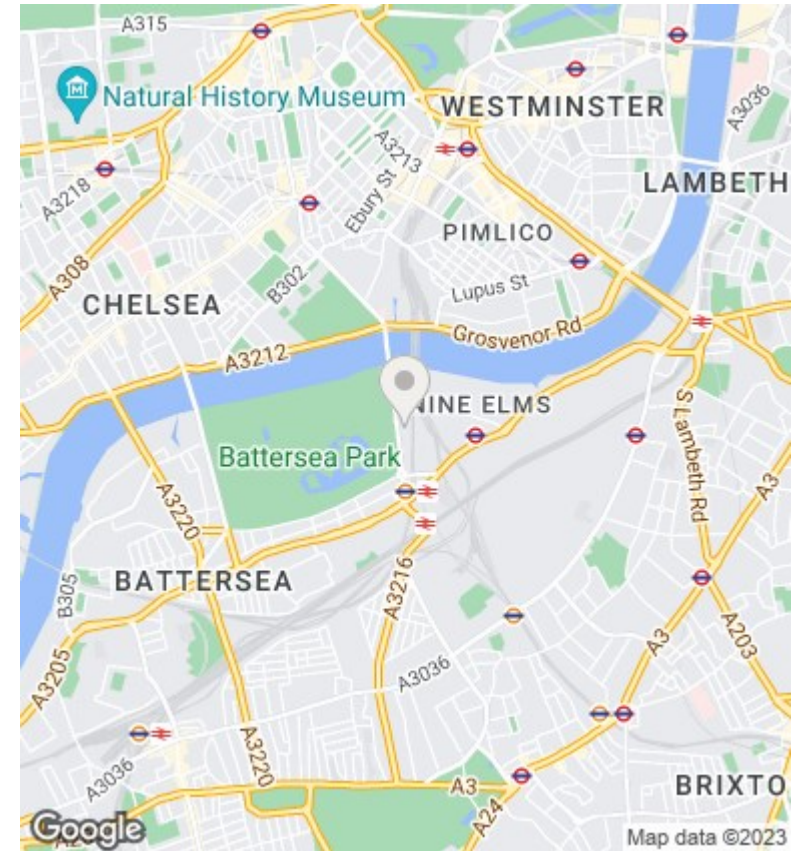
### Directions

### Viewings

Viewings by arrangement only.  
Call 02077225022 to make an appointment.

### Council Tax Band

### EPC Rating:



Energy Efficiency Rating		
	Current	Potential
<i>Very energy efficient - lower running costs</i>		
(92 plus) <b>A</b>		
(81-91) <b>B</b>		
(69-80) <b>C</b>		
(55-68) <b>D</b>		
(39-54) <b>E</b>		
(21-38) <b>F</b>		
(1-20) <b>G</b>		
<i>Not energy efficient - higher running costs</i>		
<b>England &amp; Wales</b>	EU Directive 2002/91/EC	