



21 Kinmond Court

Leamington Spa **CV32 4QU**

Chain Free £119,000

21 Kinmond Court

Kenilworth Street

A first floor, purpose built apartment for the over 60's, situated within a popular development, at the heart of Leamington Spa town centre. The property is positioned at the rear of the building, allowing insulation from street noise, whilst being serviced by a lift to all floors. Entered from a smart communal corridor into a private entrance hall, which provides access to all rooms, a storage cupboard and airing cupboard. The sitting/dining room allows a view over the attractive communal garden and provides access to the kitchen via double doors. Further to this, there are two double bedrooms, the master with integrated wardrobes, whilst there is also a shower room. The property is offered with no onward chain.

LOCATION

Being positioned in a tucked away location on Kenilworth Street, Kinmond Court is very central to all town centre amenities including local shops and independent retailers, artisan coffee shops, restaurants, parks and a nearby doctors' surgery. There are excellent local road links available including those to neighbouring towns and centres, whilst Leamington Spa railway station provides regular rail links to numerous destinations including London and Birmingham.

ON THE FIRST FLOOR

ENTRANCE HALL

Entered via a panelled door with spy hole and letterbox, from the communal corridor. There are panelled doors radiating to the sitting/dining room, to the two bedrooms, to the airing cupboard and to a walk-in storage cupboard. There is a ceiling mounted light point, a wall mounted receiver for the emergency care system and a wall mounted electric heater. The airing cupboard contains a ceiling light point, wall mounted shelving, wall mounted hanging for cloaks, slatted shelving and an immersion tank. The walk-in storage cupboard contains wall mounted shelving, a wall mounted electric fuse board and meter.

SITTING/DINING ROOM

6.32 max x 3.25 max (20'9" max x 10'8" max)

There is a double glazed window to the rear aspect of the building, allowing an attractive view over the communal garden, whilst double doors with inset partially obscured glazed panels open from the kitchen space. The focal point of the room is a fireplace with wooden surround and electric fire, whilst there are two sets of wall mounted light points and a wall mounted electric heater.

KITCHEN

2.34 max x 2.44 max (7'8" max x 8'0" max)

Having a double glazed window allowing a view over the communal garden from the kitchen sink, whilst being fitted with a complementary range of base and eye level fitted kitchen cabinets and display cases. Above the base units there is a roll top work surface with inset stainless steel sink and drainer, with chrome mixer taps over, there is an integrated four plate electric hob with extractor over and an integrated oven and grill. There is space for a fridge freezer and undercounter space for a further kitchen appliance which currently

contains a portable storage unit to complement the fit of the kitchen. There is a ceiling mounted strip light and tiled splashbacks, wall mounted shelving and a wall mounted electric heater.

BEDROOM ONE

4.19 max x 3.25 max (13'9" max x 10'8" max)

The dimensions also include the integrated wardrobes. There is a double glazed window to the rear aspect allowing a view over the communal garden, whilst mirror fronted folding doors lead to the integrated wardrobe which contains hanging space and shelving. There are two sets of wall mounted light points and a wall mounted electric heater.

BEDROOM TWO

4.19 max x 2.80 max (13'8" max x 9'2" max)

There is a double glazed window to the rear aspect allowing a view over the communal garden, a wall mounted light point and a wall mounted electric heater.

SHOWER ROOM

Being fitted with a three piece shower room suite, including a double shower with glazed sliding screen and Mira

Features

Purpose Built Apartment for over 60's

Views Over Gardens

Town Centre Location

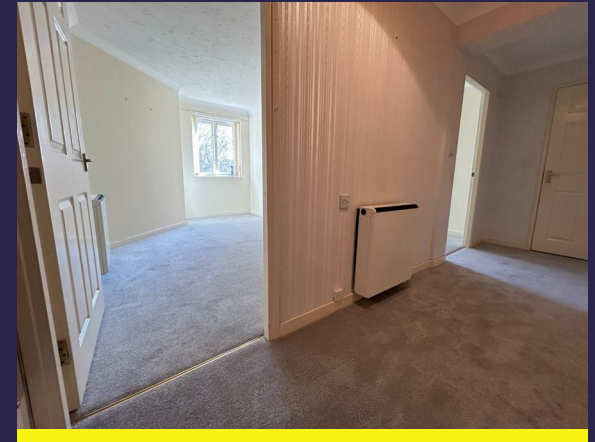
First Floor With Lift

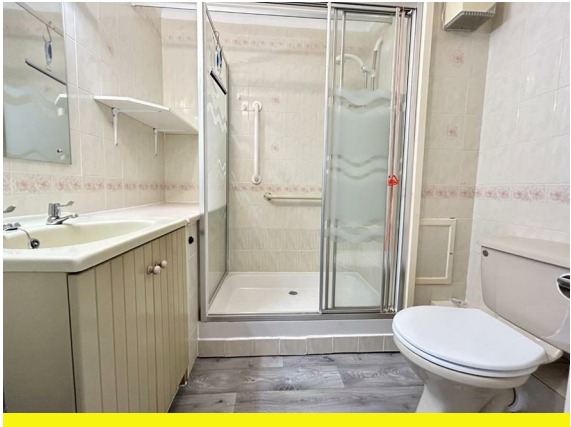
Sitting/Dining Room

Separate Kitchen

Two Double Bedrooms

Shower Room





Floorplan



21 KINMOND COURT, LEAMINGTON SPA

Whilst every attempt has been made to ensure the accuracy of the floor plan contained here, measurements of doors, windows, rooms and any other items are approximate and no responsibility is taken for any error, omission, or mis-statement. This plan is for illustrative purposes only and should be used as such by any prospective purchaser. The services, systems and appliances shown have not been tested and no guarantee as to their operability or efficiency can be given

Made with Metropix ©2013

General Information

Tenure
Leasehold

Fixtures & Fittings

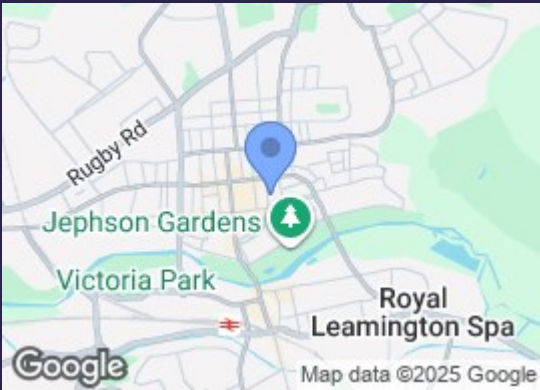
Services

We understand that mains water, electricity and drainage are connected to the property. We have not carried out any form of testing of appliances, central heating or other services and prospective purchasers must satisfy themselves as to their condition and efficiency.

Specifically excluded unless mentioned in these sales particulars.

Council Tax

Band D - Warwick District Council



Energy Efficiency Rating		
	Current	Potential
Very energy efficient - lower running costs		
(92 plus) A		
(81-91) B		
(69-80) C	83	85
(55-68) D		
(39-54) E		
(21-38) F		
(1-20) G		
Not energy efficient - higher running costs		
England & Wales		EU Directive 2002/91/EC

Contact us

01926 888998

leamington@wiglesworth.com

Visit us

14 Euston Place, Leamington Spa,
Warwickshire, CV32 4LY

wiglesworth.com