



Newcome Road, Shenley, WD7 9ET

**£585,000 Freehold**

This recently renovated 3 bedroom property located in the heart of Shenley Village is offered in show home condition throughout, and would benefit first time buyers and downsizers alike.

Living accommodation comprises of a front porch (which has footings and plans in place to build on top of) as well a large entrance hall, spacious lounge, downstairs wc and a beautiful kitchen diner with granite work tops overlooking the generously sized garden which has gated rear access. Upstairs there are three bedrooms (two doubles, one single) and an updated family bathroom as well as a lovely, bright open landing.

Also benefiting from solar panels and a driveway for 3 cars, this really is a must see property so please call us now to avoid disappointment.

EPC Rating Band C.

- Three Bedrooms
- End Of Terrace
- Recently Refurbished Throughout
- Downstairs WC
- Kitchen Diner
- Driveway For 3 Cars



## VIEWING

Strictly by appointment with Susmans Estates

**Tel:** 01923 859444

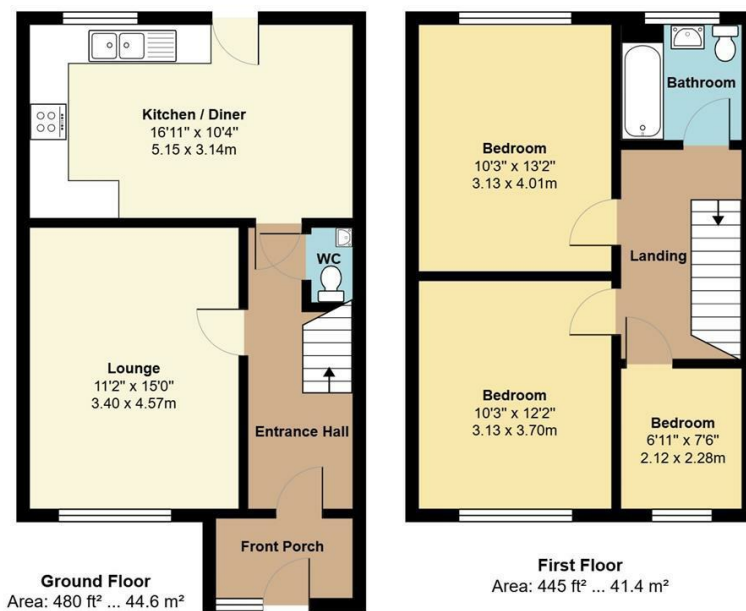
**299 Watling Street  
Radlett  
WD7 7LA**

## E-mail:

[office@susmansestates.com](mailto:office@susmansestates.com)

## Website:

[susmansestates.com](http://susmansestates.com)



Total Area: 925 ft² ... 85.9 m²  
All measurements are approximate and for display purposes only

**SUSMANS**  
ESTATES

Ref:

