



Brook Court, WD7 7JA

## Asking Price £320,000 Leasehold



This well presented **LARGE SECOND FLOOR, TWO DOUBLE BEDROOM**, apartment is situated within walking distance to Radlett's ThamesLink station. The property benefits from a **SEPARATE FITTED** kitchen, and features **A MODERN BATHROOM**. To the exterior are communal gardens and off street parking as well as **GARAGE** for additional secure parking or storage.



The property is located a short walk from Radlett's village centre with its array of local shops, delis and coffee shops. The **THAMES LINK** Mainline station affords easy access to Central London in under 30 minutes to Kings Cross via **WEST HAMPSTEAD**.

Leasehold 164 years remaining/ Service Charge £2000 per annum / Council tax Band C / Garage



- Large Two Double Bedroom Flat
- Second Floor
- Communal Gardens
- Garage & Off Street Parking
- Gas Central Heating/ mains drainage
- Chain Free
- Leasehold 164 years remaining/ Service charge £2000

## VIEWING

Strictly by appointment with Susmans Estates

**Tel:** 01923 859444

**299 Watling Street  
Radlett  
WD7 7LA**

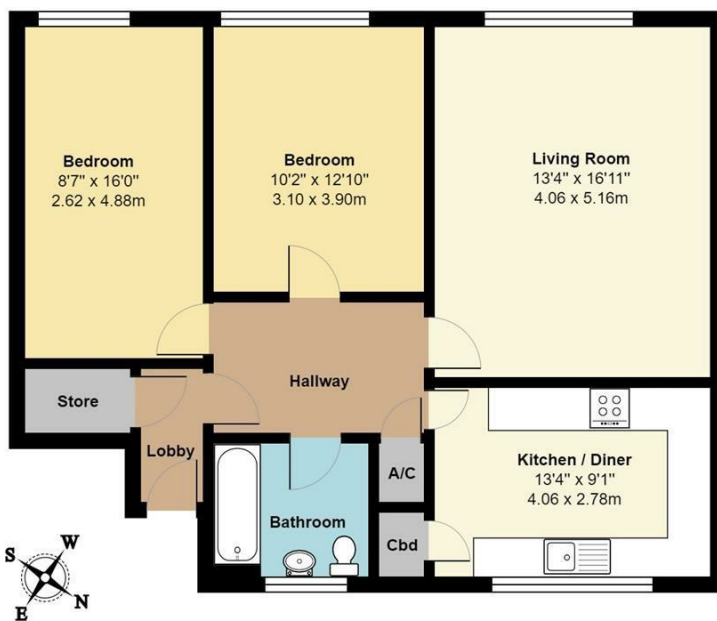
## E-mail:

[office@susmansestates.com](mailto:office@susmansestates.com)

## Website:

[susmansestates.com](http://susmansestates.com)

Ref: 187



**First Floor**

Total Area: 829 ft² ... 77.0 m²

All measurements are approximate and for display purposes only

