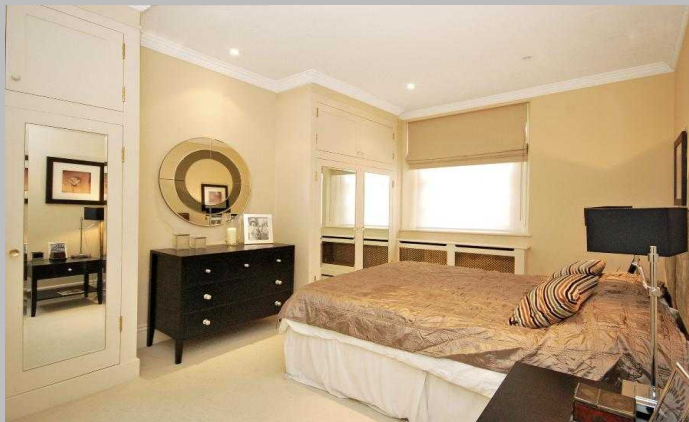


**WEST EATON PLACE, KNIGHTSBRIDGE, SW1X**





### Key Features

- Large and beautifully finished Belgravia apartment
- Spacious and bright double reception
- Original period features throughout
- Lovely private terrace and small patio
- Moments away from Sloane Square

### Description

An elegant and exquisitely presented Belgravia apartment boasting original period features located moments from Sloane Square. This beautiful raised ground and lower ground floor apartment is spread over 2,051 sqft, and comprises a large double reception room with dining area and high ceilings throughout, part open plan fully fitted kitchen and breakfast room with doors leading out to the spacious private terrace, guest bedroom and cloakroom, downstairs leads to a large hallway with study area, principal bedroom with fitted wardrobes, en-suite bathroom and small patio, and second double bedroom with modern en-suite shower room. The property further benefits from a separate utility room, further storage space in the vaults and original period features such as a white stucco façade, high ceilings, cornicing and large windows providing an abundance of natural light.

### Situation

West Eaton Place is an exclusive address in the heart of Belgravia, close to both Sloane Square and Knightsbridge. The closest underground station is Sloane Square (District & Circle line).

**WEST EATON PLACE,  
KNIGHTSBRIDGE, SW1X**

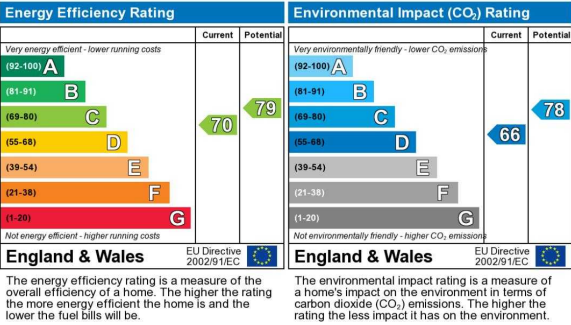


*Elegant and beautifully presented Belgravia apartment with private terrace and original period features*

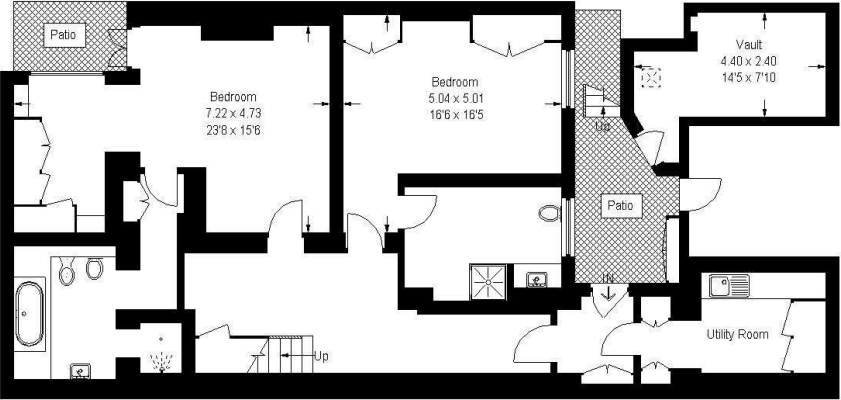


Terms

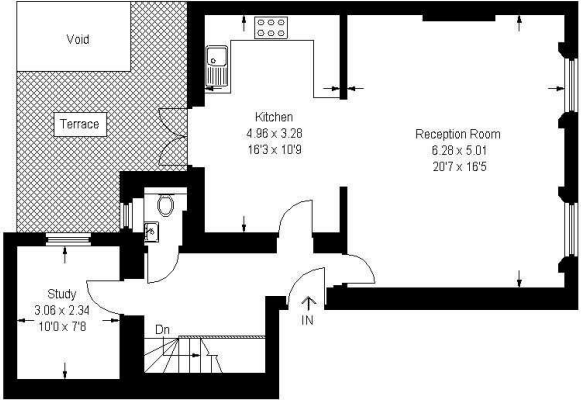
**Price:** £2,800.00 per week  
**Furnished/Unfurnished:** Unfurnished  
**Local Authority/Council Tax:** Westminster City Band G £1,695.30  
**Viewing** To view call 020 7043 8431  
**Parking:** Residents Parking  
**Fees:** M2 Property do not charge tenant administration fees. We are members of The Property Ombudsman Redress Scheme for Residential Sales and Lettings (Membership No. D00776) and Client Money Protect (Membership No. CMP003231).



Approximate Gross Internal Area ~ 181 sq m / 1948 sq ft  
Vault ~ 10 sq m / 11 sq ft  
Total ~ 191 sq m / 2056 sq ft

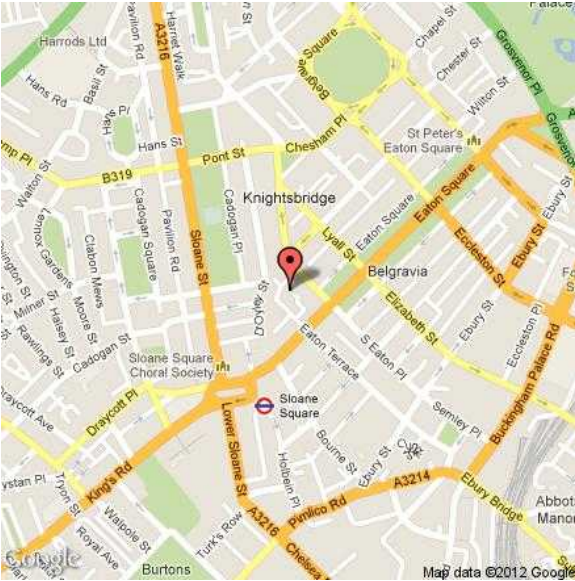


Lower Ground Floor



Raised Ground Floor

Illustration for identification purposes only, measurements are approximate, not to scale.  
Copyright © M2 Property Limited (143866)



M2 Property | 6 Roland Gardens | South Kensington | London SW7 3PH | 020 7043 8432 | info@m2property.com | www.m2property.com

We have prepared these property particulars for the general guidance of intending purchasers or lessees. They are not designed to constitute a part of an offer or contract. For the purpose of the Property Misdescriptions Act 1991 and subsequent amendments we have taken all reasonable steps to ensure the accuracy of the details contained herein, however such statements are not to be relied on as a representation of fact and do not constitute any warranty or representation by M2 Property or the Vendors or Lessors. All photographs, measurements, floor plans and distances are given as a guide and should be checked before purchasing furniture, carpets, fixtures or fittings. Intending Purchasers or Lessees should satisfy themselves as to the accuracy of each of the statements contained in these particulars and should rely solely upon their own judgement, inspection and enquiries before entering into any contract. The floor plan if shown is intended as a guide to layout only and must not be relied on for any other purpose. It is not to scale. The copyright of all details, photographs and floor plans contained in these property particulars remain exclusive to M2 Property.