





Key Features

- Lovely one bed apartment with wood flooring throughout
- Bespoke fitted kitchen with Corian worktops
- Double bedroom with fitted wardrobes
- Modern and neutral decor throughout
- Close to the local amenities of Gloucester Road

Description

An exquisitely presented one bedroom apartment which has been refurbished to the highest standards in a minimalist style, set within an elegant red brick period building just moments from Gloucester Road. The apartment comprises a bright reception room with wooden floors, bespoke fitted kitchen with Corian worktops and Siemens appliances, washing machine and separate tumble dryer, double bedroom with fitted wardrobes and stunning en-suite shower room.

Situation

Courtfield Road is ideally located for all of the amenities of both Gloucester Road and South Kensington. Transport links are excellent with Gloucester Road underground station a few minutes walk away (District and Circle Lines) for links to the West End and the City.

COURTFIELD ROAD, SOUTH
KEN, SW7



An exquisitely presented one bed flat moments from Gloucester Road



Terms

Price: £595,000

Tenure: Share of Freehold 97 Years Unexpired

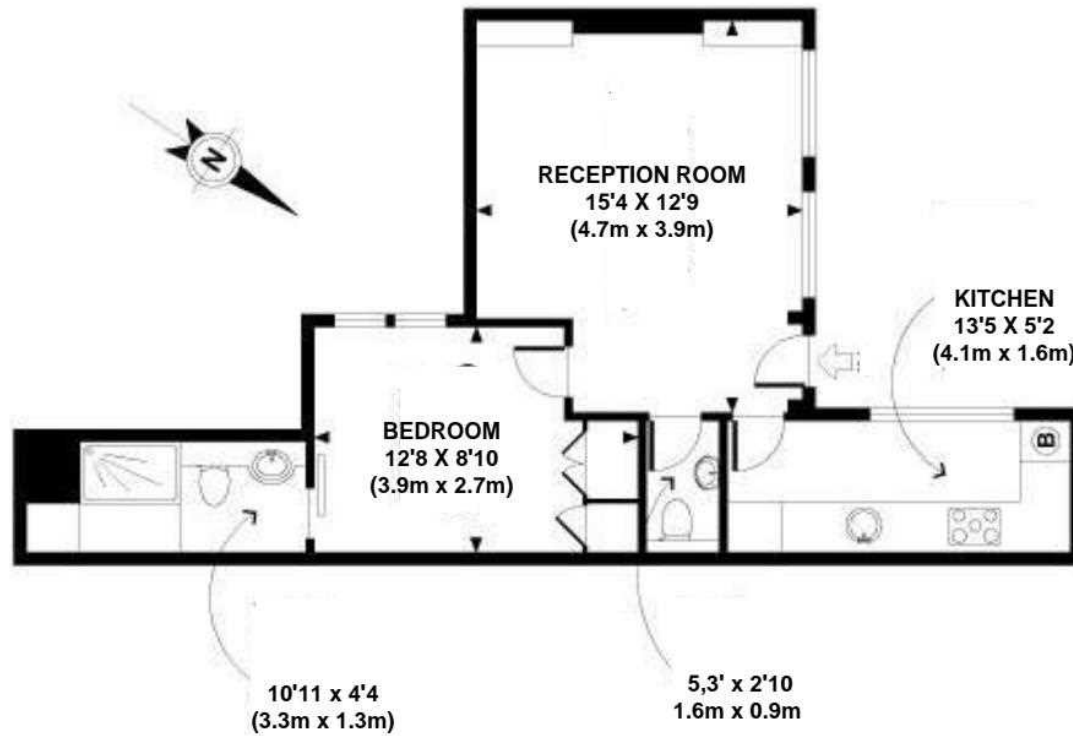
Service: £1105.90 Six Monthly

Ground Rent: N/A

Local Authority/Council Tax: RBK&C Band G £2,514.97

Viewing: By appointment with M2 Property on 020 7043 8431

Parking: Residents Parking



GROSS INTERNAL FLOOR AREA 425 SQ FT (40 SQ M)

Floorplans are for identification and guideline purposes only, not to scale

Energy Efficiency Rating		Environmental Impact (CO ₂) Rating	
Current	Potential	Current	Potential
Very energy efficient - lower running costs (92-100) A		Very environmentally friendly - lower CO ₂ emissions (92-100) A	
(81-91) B		(81-91) B	82
(69-80) C	78	(69-80) C	
(55-68) D	68	(55-68) D	68
(39-54) E		(39-54) E	
(21-38) F		(21-38) F	
(1-20) G		(1-20) G	
Not energy efficient - higher running costs		Not environmentally friendly - higher CO ₂ emissions	
England, Scotland & Wales	EU Directive 2002/91/EC	England, Scotland & Wales	EU Directive 2002/91/EC

The energy efficiency rating is a measure of the overall efficiency of a home. The higher the rating the more energy efficient the home is and the lower the fuel bills will be.

The environmental impact rating is a measure of a home's impact on the environment in terms of carbon dioxide (CO₂) emissions. The higher the rating the less impact it has on the environment.



M2property

M2 Property | 6 Roland Gardens | South Kensington | London SW7 3PH T 020 7043 8432 E info@m2property.com www.m2property.com

We have prepared these property particulars for the general guidance of intending purchasers or lessees. They are not designed to constitute a part of an offer or contract. For the purpose of the Property Misdescriptions Act 1991 and subsequent amendments we have taken all reasonable steps to ensure the accuracy of the details contained herein, however such statements are not to be relied on as a representation of fact and do not constitute any warranty or representation by M2 Property or the Vendors or Lessors. All photographs, measurements, floor plans and distances are given as a guide and should be checked before purchasing furniture, carpets, fixtures or fittings. Intending Purchasers or Lessees should satisfy themselves as to the accuracy of each of the statements contained in these particulars and should rely solely upon their own judgement, inspection and enquiries before entering into any contract. The floor plan if shown is intended as a guide to layout only and must not be relied on for any other purpose. It is not to scale. The copyright of all details, photographs and floor plans contained in these property particulars remain exclusive to M2 Property.