





Key Features

- Modern and bright two bed two bath apartment
- Large reception area with open plan kitchen
- Private balcony with stunning river views
- Access to communal gardens
- Exclusive 24 h portered riverside development

Description

A fantastic two double bedroom, two bathroom fifth floor apartment situated within this exclusive riverside development. The flat comprises a bright reception/dining room with access to a sunny balcony, contemporary fully equipped modern kitchen, master bedroom with fitted wardrobe and en-suite shower room, second double bedroom and bathroom with shower over bath. The property further benefits from secure entry phone system, 24 hour concierge and 3 Gb broadband service for residents (by separate negotiation).

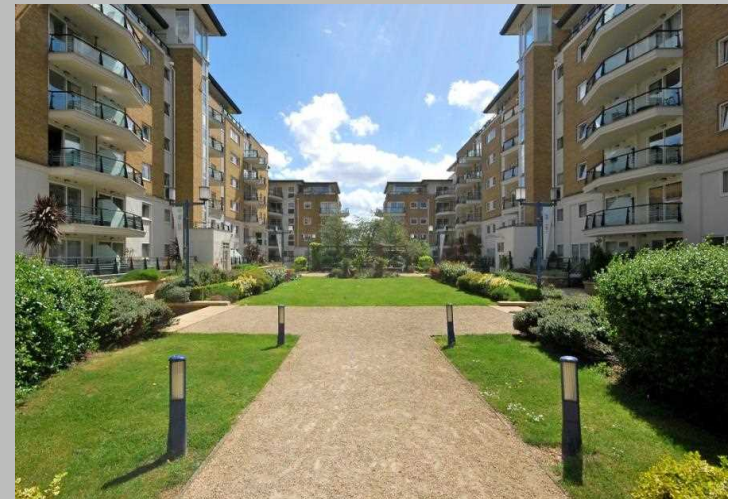
Situation

Smugglers Way is close to Wandsworth Bridge and overlooks the River Thames. The riverside walk has a number of shops and cafes located within the development. The area benefits from a main-line station Wandsworth Town which is 11 minutes to Waterloo Station (Jubilee, Northern, Bakerloo lines, British Rail) and central London. By road, the nearest main route is the A3 and South Circular (A205) for routes in and out of London.

RIVERSIDE WEST,
SMUGGLERS WAY, SW18



Modern two bed two bath flat with stunning river views



Terms

Price: £497,500

Tenure: Leasehold 975 Years Unexpired

Service: £3301.88 Annually

Ground Rent: £175.00 Annually

Local Authority/Council Tax: Wandsworth Band F £1,388.32

Viewing: Exclusively via M2 Property on 020 7043 8431

Parking: Secure by sep neg

Energy Efficiency Rating		Current	Potential
Very energy efficient - lower running costs			
(92-100) A			
(81-91) B			
(69-80) C		78	84
(55-68) D			
(39-54) E			
(21-38) F			
(1-20) G			
Not energy efficient - higher running costs			
England, Scotland & Wales		EU Directive 2002/91/EC	

The energy efficiency rating is a measure of the overall efficiency of a home. The higher the rating the more energy efficient the home is and the lower the fuel bills will be.

Approximate Gross Internal Area = 62 sq m / 667 sq ft

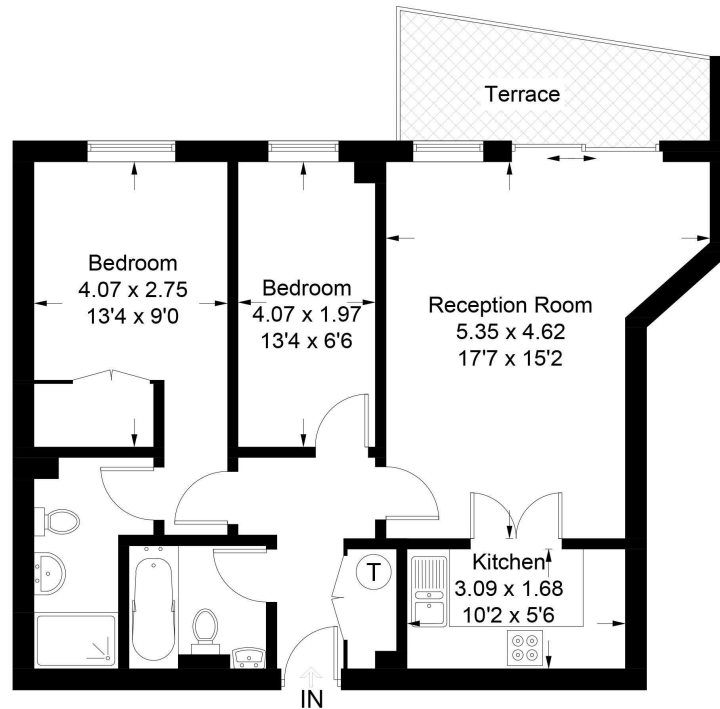
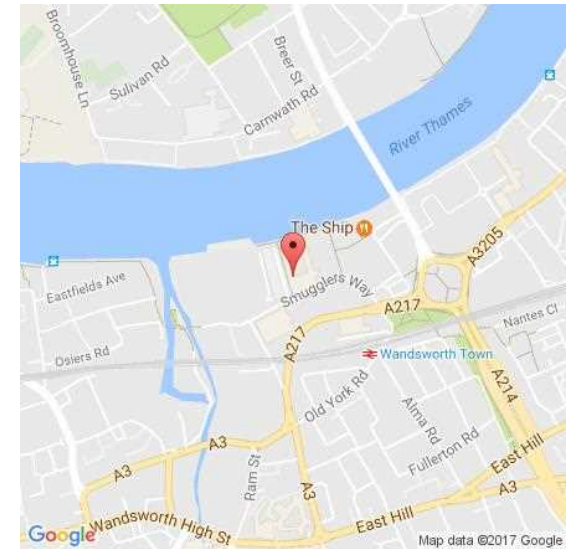


Illustration for identification purposes only, measurements are approximate, not to scale.
Copyright © M2 Property Limited (ID346611)



M2property

M2 Property | 6 Roland Gardens | South Kensington | London SW7 3PH T 020 7043 8432 E info@m2property.com www.m2property.com

We have prepared these property particulars for the general guidance of intending purchasers or lessees. They are not designed to constitute a part of an offer or contract. For the purpose of the Property Misdescriptions Act 1991 and subsequent amendments we have taken all reasonable steps to ensure the accuracy of the details contained herein, however such statements are not to be relied on as a representation of fact and do not constitute any warranty or representation by M2 Property or the Vendors or Lessors. All photographs, measurements, floor plans and distances are given as a guide and should be checked before purchasing furniture, carpets, fixtures or fittings. Intending Purchasers or Lessees should satisfy themselves as to the accuracy of each of the statements contained in these particulars and should rely solely upon their own judgement, inspection and enquiries before entering into any contract. The floor plan if shown is intended as a guide to layout only and must not be relied on for any other purpose. It is not to scale. The copyright of all details, photographs and floor plans contained in these property particulars remain exclusive to M2 Property.